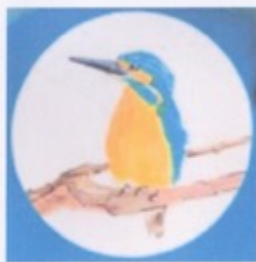


PARISH E-NEWS



News and updates from
organisations in the Colney Heath
Parish community including

Colney Heath village, Highfield,
Hill End, Oaklands, Roestock,
Smallford, Sleapshyde, and
Tyttenhanger

To join the circulation list – its free – email jackclemow@gmail.com

ISSUE 7 : AUTUMN 2020



The Harvest, painting by Pam Rowell

WELCOME

In this 7th edition of our “Parish E-News” you will see news from, and information about, a number of sources received for inclusion in this issue.

Clicking this link <https://www.colneyheathvillagehall.com/parish-e-news.html> will take you to the website page including this newsletter and previous issues.

Please share this newsletter and to print pages for folk who don't use the internet or e-mail..

- if you have a story, would like to promote an organisation, an event or a cause, or to advertise a local service or business – there is no charge for inclusion in this digital format
- if you spot any errors or have comments

please e-mail jackclemow@gmail.com (Editor, Trustee of CH Village Hall)

INDEX	page
Editorial	3
St Mark's Church	4
Ali Marathon	6
Parish Council matters	7
4Colney Heath Residents Association	9
Sport4Kids	10
Colney Heath and District History Society	11
Smallford Residents Association	12
Covid controversy	13
Smallford Station and Alban Way Heritage Society	15
Iris' Art Group	17
Colney Heath WI	18
Twinning Association (CBTA)	19
Colney Heath Village Hall	20
Round up	21

It was not a great feat of forecasting to predict in our summer edition that this winter would see an increase in Covid-19 infections. In the summer, family reunions, “Rishi’s dishes” and pubs opening helped create, if not a return to normality, at least some relief from the months of lockdown from March to June - at least for some in our community.

Services at **St Marks** continued online and started inside the Church again. Activity returned to the **Village Halls** in Tyttenhanger and in Colney Heath. We have learned to observe social distancing, remembered to wash our hands, mastered the NHS check-in QR code, and enjoyed the vanity of mask fashion statements.

Alison ran her “London” **marathon** (plus an extra 2 miles) in the October rain in aid of Shelter raising more than £8,000. Ruth Herman writes about the Colney Heath and District **History Society**. Jeff Lewis writes about the **Smallford Station and Alban Way Heritage Society** activities. The **WI** and **Twinning** managed to meet but, like the **Theatre Society**, future opportunities seem limited for a while.

Many in the 60+ age group, and most 75+, recognize the danger of covid-19 to their health, and like Falstaff (were he on the stage today) think “the better part of valour is caution”, and limit their contacts. The fortnightly “Old Friends” meeting – for many their only opportunity for social contact - has not resumed. The big question is should everyone suffer the social and economic consequences of the measures to control the infection. Thoughts on this in **Covid controversy**.

The pandemic has seen a rise in scams of all sorts. Connect to OWL (online watch link) which has reports of scams and important information on how to protect your money.

Smallford Residents Association has had a long standing and active role in promoting the interests of the local community. A similar organisation is long overdue in Colney Heath. “**4ColneyHeath**” has been set up as a Residents Association for Colney Heath Village. The chair of the founding committee, Renu Bansal, sets out the reasons and aims of this organisation.

Sport4Kids is coming to the Colney Heath Village Hall in November, a great indoor activity for young children this winter.

Colney Heath Facebook has seen many posts about the A414 Longabout works.

The deadly exits from Colney Heath and Smallford onto the A414 have struck terror into many motorists for years. Some residents would not brave the crossing, preferring to drive to shops via Tollgate Road in Hatfield and Potters Bar, others to St Albans via Coursers Road and A1081. With a signalized junction it is hoped motorists will no longer risk injury or death, even if the waiting time to cross is extended to keep the A414 moving.

Finally, after years of campaigning - and many accidents, injuries and deaths - the works started on 17th August. The programme anticipated the exit from Colney Heath would be closed until completion on 26th October. This resulted in a 50% reduction in income for the Shop and Post Office, and the Crooked Billet pub, with no “passing trade”. The superb response from residents in Colney Heath to the appeal to see “if the shop had it first” before going to the supermarket, and to “have a pint” may have saved our shop and pub from closing (until now). There is no compensation scheme for loss of passing trade from road closures. The latest estimate for completion is now 24th November. After the damage from the lockdown, and 3 months of road works, will our local businesses survive with tightening Covid-19 restrictions? and “no deal” at the end of the Brexit transition period? Troubling times indeed!

The consternation and outrage expressed on Colney Heath Facebook about the “Roundhouse Farm” Planning Application for 100 houses on Bullens Green Lane. The houses that overlook this farm land would lose their bucolic view. The noise from the few days each year for ploughing, planting and cropping - the markers of the seasons - would be missed. The joy of a walk brushing one’s hands through the crops would be a sad loss. Many feel we must not lose Green Belt land. Once it’s gone, it’s gone forever.

This is however, not essentially a “NIMBY” reaction. At the centre of concern is Colney Heath village cannot absorb the size of this development – the fight for school places, the roads saturated with traffic, the power cuts – and it would not provide realistically “affordable” housing for the next generation of our local community.

And last, but not least, “turning liabilities into assets” features in **Parish Council Matters**



www.stmarkscolneyheath.co.uk

Tel: 01727 825175. Email: office@stmarkscolneyheath.co.uk

You may have seen the poster outside St. Mark's which says 'We're back!'. We're glad to say that we have been meeting in church since the 5th of August. At the beginning of September we returned to our usual two services in church at 8.30am and 10.30am. The 10.30am service is **live-streamed** and is available on our website or the St. Mark's YouTube channel.

You are very welcome to join us as we re-gather in our building. Services will look a little different as we have put measures in place to ensure everyone's safety:

- ◇ The layout of the seating has been changed to comply with the social distancing measures.
- ◇ There will be no congregational sung worship (worship band only)
- ◇ We ask that you sign-in at the door for track and trace purposes.
- ◇ That you wash your hands or use the sanitiser supplied.
- ◇ Face coverings must be worn unless you are exempt.

SERVICES FOR NOVEMBER

Sunday 1st 8.30am Holy Communion 10.30am Morning Worship

Remembrance Sunday 8th 8.30am Holy Communion 10.30am Morning Worship

Sunday 15th 8.30am *Morning Worship* 10.30am *Holy Communion*

Sunday 22nd 8.30am Holy Communion 10.30am Morning Worship

Sunday 29th 8.30am Holy Communion 10.30am Morning Worship

Our Childrens' and Young Peoples' groups meet at the same time as the 10.30am service in the *church centre*. If you would like your child to attend *prior booking is essential*. Please contact the church office.

You are especially welcome to join our Remembrance Service on November 8th at 10.30am.

Look out on our website for information about our Christmas services and events!

www.stmarkscolneyheath.co.uk

Although church looks a little different at the moment, we have continued to provide ways to worship and give support to one another. If you have questions, or would like to explore issues of life and faith, do let us know.

Subject to the restrictions and guidance by the government and the Church of England, St. Mark's is available for funerals and weddings.

As we move through the next few weeks and months, we recognise that this continues to be an uncertain time for us all, and we offer you our prayers and support.

Every blessing

Rev. Caroline Keightley



A prayer for ourselves, our families and our community:-

Lord God, we thank you for the blessings of life and love, hope and peace.

We pray for those who are anxious for the future, for those experiencing personal or financial suffering at this time.

Bring your comfort and peace to them all.

And we ask for your strength, patience and hope in the coming days.

Lead us and our community each day to a place of greater kindness and love.

Amen.

A verse from the Bible:

'May the Lord of peace himself give you peace at all times and in every way'

2 Thessalonians 3: 16

Alison Chason is a remarkable woman. I know her from the Zumba classes she used to run in the Colney Heath village hall, and now from the Zumba classes that she continues to lead on line via Zoom.

A few years ago she and her family were made temporarily homeless due to a sink hole that opened outside their block of flats. Since then she has run events to raise money for the homeless charity Shelter. She decided that this year she would raise money for the charity by running the London marathon due to take place in April. She applied for a place which was awarded and she started training, and training ...and training, and was race-ready in March.

Then Covid intervened and the marathon was postponed to October with only elite runners allowed to run in London. This would be Alison's first marathon so she did not qualify. Disappointed at the turn of events and not wanting all her training to go to waste she registered to run the "virtual" marathon around St. Albans. There was nothing 'virtual' about it – there were real people really running 26.2 miles on a planned and measured route.

4th October was the appointed date so Ali continued to train hard and sustained a few injuries on the way towards that date. Various friends, family and Zumba dancers volunteered to supply water and snacks at specified points on her route and she was all set to go.

However, this time the weather intervened with rain for several days. Some places on her route became flooded so the 3rd October saw Ali having to re-plan her route and advise helpers to be in different places.



I was due to be on the Alban Way at Nast Hyde Halt.this is what the Alban Way looked like at Smallford Station. It was so bad that one man got his canoe out to ferry runners (who had not checked conditions) through the worst!



Some of those at the 'refreshment' stations had made placards of London landmarks ready for photo opportunities along the way. I was with Cheryl Parker in St. Albans and we cheered Ali on towards the last few miles of her run.

Having set off at the crack of dawn (5.30 am) Ali crossed her finish line at Longacres Park less than 6 hours later to be cheered and congratulated by friends and family. It would have been a better time if, due to a technical glitch, she had not actually run 28.2 miles instead of 26.2 miles, and all in the pouring rain.



Talk about overcoming obstacles, and she raised a magnificent sum in excess of £8,000 for Shelter.

Parish Council Newsletter

The long-promised Colney Heath Parish Council Newsletter, Edition 1, dated September 2020 was received and read with great trepidation by the editorial team here at the Parish E-News desk. Would their newsletter render the Parish E-News redundant? If anyone thought the Council's Newsletter was going to be the successor to the Chronicle, stopped in 2015, they would have been disappointed.

With a sigh of relief we could see our E-News could remain like a quarterly "Mail" or The Sun" with community news, while they could be like "Pravda", twice a year (maybe).

Chris Brazier's Report as Chairman (which he says he didn't write) had much happiness to impart - other than mentioning some unpleasantness at a Council meeting. This was after the Council had evicted the Scouts from their HQ in Roestock Park (some very rude things were shouted by the proles in the "public gallery"). But Chris was pleased the Council "has an understanding with the Scouts, and we are working towards regularizing the Scouts use of the Roestock Hut". Kate Slaughter did 2 surgeries and hoped to do another in September but an announcement of this was not spotted on Facebook. The Neighbourhood Plan piece, and Derrick Crump's article on Colney Heath Common forming the bulk of the content, were very worthy. Whether it was good value will depend on the community's judgement on the cost of production and circulation, an enquiry which the Clerk is treating as a Freedom of Information request.

The Parish Council's newsletter states "Our (neighbourhood) plan is about land use in the Parish...it can protect areas of land, places and buildings which are important to residents. These are the green open spaces which many of us currently enjoy...some of these have no statutory protection and this is something our plan will address."

However, it seems our Parish Council's view that open spaces acquired for the benefit of the community (presumably with Parishioners' money) are a liability, and their policy is to turn "liabilities into assets". Many residents find the idea that community facilities, bought with their money, are "liabilities" perverse - and they wonder when these are turned into "assets", i.e. cash, what this money will be spent on?

On 14th October Anna Morris (Colney Heath resident) commented on the Colney Heath Village Facebook

"I did just want to bring attention to all those rightly concerned about losing more of our green spaces that the [Colney Heath Parish Council] is looking to sell off 2 of our green spaces Gloucester Park and the Two Horseshoe field, they also declined to renew the contract on the village community park and who knows what will happen to the play area etc which makes up the football club?"

"These were valuable green assets for our village which are now very much under threat, it's not just new developments we need to watch out for if we are serious about protecting green spaces."

Gloucester Park

This was purchased in 2009 for the community. Chris Brazier (a Councillor then) is reported to have said at the time "we will retain it as green space which can never be built on."



At the Parish Council meeting in July 2020 it is recorded "After debate it was duly proposed, seconded and RESOLVED unanimously by a show of hands that the land at Gloucester Park be marketed for sale. The Clerk would commence preparation investigation into a sales report for this land."

Chris Brazier and Hilary Brazier were not present when this vote was taken.

One can't stop wondering why this land could not be a happy mixture of play area, park and allotments. The land is allegedly not good enough for allotments. One would have thought a bit of manure would do the trick - there's a lot of it about in the Parish.

Colney Heath Community park

This is the small park between St Marks Church and the A414 which the Parish Council leased from Herts Country Council but have decided not to renew the lease. HCC have asked the Parish Council if they want their “assets”.

The Environment Committee of the Parish Council met in October and the draft minutes state

“Assets at Community Park

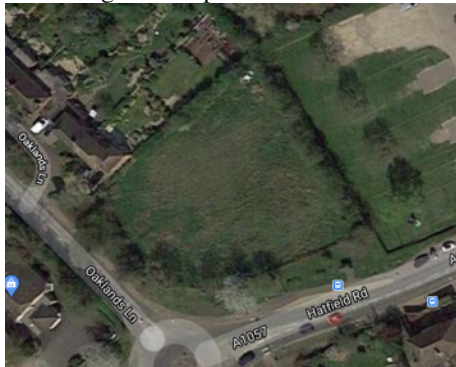
Quotes had been obtained for removal of the assets and an update given. The Clerk was instructed to report the information to HCC.”



Colney Heath Community Park

Horseshoe Field

At the July Parish Council meeting “It was noted that there were several parties interested in the lease of this land. Cllr Slaughter had received a recent email advising that a Residents group now wanted to acquire the area and take the liability from the Parish Council so this would be added to the increasing list of options.”



Horseshoe Field

As reported in our last newsletter (“the purchase price of £5,000 plus £50,000 in legal fees”). I must have “mis-heard”.

The Clerk now reported to the October Council Meeting “The costs in this case were incurred between 11th August 2011 with the final invoice having been paid 14th December 2015.

Legal costs to solicitors £14,288.73

Purchase of land from Punch Taverns £ 5,000.00

Payment of costs for Punch Taverns £ 3,334.90

Payment to occupier £ 3,000.00

Surveys £ 520.05

The total of legal invoices and all costs in this matter were £29,056.28 with VAT deducted of £2,912.60 makes the total spent by Colney Heath Parish Council in the acquisition and registration of the title for HD519567 as £26,143.68.”

The Smallford Residents Association are interested in this land becoming a Community Park, perhaps with allotments here too.



The Scout hut at Roestock Park?

After the Parish Council meeting on 22nd October a Scout hut at Roestock Park does not look very promising, with a repair estimate of more than £100,000.

If the Scouts want to lease what they previously built with their own money, they have to find and guarantee the money for the repairs, and pay a “fair value” rent.

If the Scouts, or indeed anyone else, are not able to then the Council will have “a dangerous, depreciating asset that will cost the Council a lot of money to do up or knock down”.

The building is apparently “uninsurable” so it must be hoped it doesn’t burn down.

I would like to introduce you to our newly formed residents' association for friends and residents of our village, "4ColneyHeath".

The Association was formed on 5 October 2020 by me, John Clemow, Graeme Shaw, Pam Fox and Gerry Savage and *we're here 4U*.

We have **4 aims** to improve your experience of living in and around the village:

1. we wish to listen to your ideas,
2. to represent your collective views,
3. to improve the quality of life here and
4. to encourage a strong community spirit.

But, we can't do it alone, so come and join us. *It's free.*

Whilst we are all unpaid volunteers in this mission, and volunteers will be needed to turn ideas and wishes into reality.

We will welcome any donations to cover expenses which helps us to help you. We think £5 per household is reasonable sum.

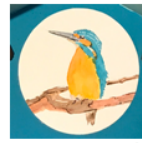
Please drop us a note to let us know what you like about living here, your ideas, experiences and concerns. We're just starting out, but we have good intentions of implementing our 4 aims.

We are aware that many people living in the village do not have or use the internet, so miss information and messaging via websites, e-mail and social media. Part of our mission is to connect with this part of our community

In Colney Heath we have amazing flora and fauna and breathtaking scenery. The Common and the fields surrounding our village provide a wonderful rural setting to live in, while we are almost on the "doorstep" of St Albans. With a caring community, and many friends of the village, we will be working hard to keep it that way - and improve it.

We want to make sure that residents can have some influence over the changes coming our way, and to bring people together as much as possible - even whilst Covid-19 interrupts and restricts the way we live.

Renu Bansal
Chair, 4ColneyHeath.

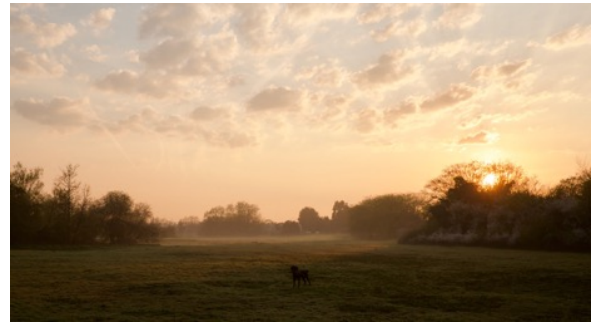


4 COLNEY HEATH

Association of friends and residents of Colney Heath village

Website <https://4colneyheath.weebly.com>

Email 4colneyheath@gmail.com



Dawn on the heath, photo by MarkO

Sport4Kids is planning to start football for “Tots” and “Kickers” in late November.

To book go to www.sport4kids.biz/football-venues

SPORT4KIDS

**50% off
first full
month**

KIDS & TOTS FOOTBALL

Colney Heath Village Hall

Colney Heath

Every Sunday!



S4K Tots (18m to 3 years)

S4K Kickers (3 to 5 years)



Based on the **Dutch Coerver**, **Spanish Tiki-Taka**
and **Brazilian Futsal** coaching techniques.

FREE TASTER VOUCHER

Claim your free football taster lesson by
heading to **[www.sport4kids.biz/football-](http://www.sport4kids.biz/football-venues)**
venues and selecting your local venue.



Ellenbrook Fields

The 'stand out' news since the last Newsletter is that the application by Brett to quarry the Ellenbrook fields and those closer to Smallford, was quashed at the County Development Control meeting held online on September 24th.

The decision could not have been closer, the proposal being rejected by 5 votes to 4 for a variety of reasons. These included the concern that the project would further threaten local water abstraction for the public supply at Essendon, by changing the direction of the Bromate plume which still flows in groundwater from Sandridge toward the New River. There were also concerns of increased traffic, noise and air pollution.

This was the culmination of four years work by Smallford Residents Association and the Ellenbrook Area Residents Association, the concerns about the project raised by both St Albans and Welwyn Hatfield District Councils, and several parish, district and county councillors (they know who they are!). We may have to do all this again if there is an appeal, but we will be prepared!

Horseshoe Field

The Smallford Residents Association is very interested in the Colney Heath Parish Council deliberations on the future of Horseshoe Field, that small piece of land on the North East corner of Smallford roundabout. The history of this is that after years of trying to find out who actually owned this land, and all suspects denying same (!), the Smallford Residents Association found it was owned by Punch Taveners who were willing to sell it.

The Parish bought it some years back but as yet it hasn't been restored and is currently overgrown and needing much TLC! The Smallford Residents Association is most keen to work with the Parish Council to restore this land. However, attending a recent an online parish meeting to hear options being discussed, these included selling or leasing the land. Such options would be incredibly disappointing if carried through, as the whole point of buying it in the first place was to restore it for Residents to enjoy.

Smallford Lane

At the time of writing Smallford Lane has been closed near the roundabout as drainage ditches and pipes are installed, which will hopefully deal with the current issue of flooding after any period of rain. This has been on the SRA agenda for some years and so we all hope that the work is successful; it should be complete by the time the Parish news is issued.

There are (at least) two ways to tackle history. One way is to make it really boring. Do you have very dull distant memories of dates (1066) and battles (Hastings)?

Forget these isolated facts (if you haven't already forgotten them) because the newly re-formed Colney Heath and District History Society will be anything but dull. The Society has been set up to provide an interesting and informative narrative on the village for everyone - from the oldest residents to the youngest.

We hope the long standing villagers will entrust it with their precious and unique experiences. For the youngsters we will give them the story of the village before their time in an exciting way. We will try to show them that an understanding of the past will help them plan the future. We may even inspire some young historians.

The first few months, despite the restrictions imposed upon us by the pandemic, have been encouraging.

Other local history societies have welcomed us and included our Society in their newsletters (The British Association for Local History, and St Albans Archaeological and Architectural Society). The London Colney History Society have been in touch to see what we can do for each other.

The first major project however, as we said in the last Parish E-news, is a book about Colney Heath and surrounds which will take us from the Romans to the Victorians. The draft is almost finished! I'm sure many of you will buy it because it is about your village. But rest assured it is written to entertain as well as inform.

And we also hope to do a survey of all the listed buildings in the Parish. Hopefully the next volume will take us through the twentieth century to yesterday.

So watch out for news of publication. We are well set to look forwards to building a new and inclusive History Society.

But there is one thing that we need and that is your support. Interested?

For more information please contact John Clemow, jackclemow@gmail.com or call 07803 313 525.

Dr Ruth Herman
Committee member Colney Heath and District History Society



Editor's note : here's a plug for Ruth's recently published "Grub Street", a great example of her interesting and informative style of writing while being well researched.

An extract from the chapter on the classified adverts to whet the appetite

Some examples of runaway wives makes for interesting reading. In 1702, Teresa Moor eloped, taking 'diverse goods'. Tradesmen are instructed 'not to entertain her' nor 'entrust her with any money or goods for the said Thomas her husband will not pay the same'.

A superb idea for a Christmas present, available on Amazon.

As we face the winter with more draconian restrictions being imposed, our Government's approach is being seriously questioned. Following "THE Science" did not work, because there is no single scientific view. But now have "data" to help see what has happened, in particular the age-related impacts of covid-19.

Preventing our hospitals being overwhelmed is a valid objective. In March the NHS was almost overwhelmed - but (it is alleged) only by exporting the old to infect others and die in care homes, and by rationing by "triage points" that denied treatment to the old and vulnerable.

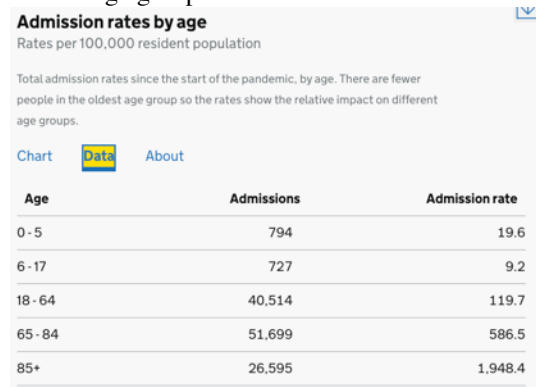
In the week of "3 Tier" restrictions announced on 12th October the Guardian said Hospitals "to run out of Covid beds within a week".

Who is infected?

No one knows as this is dependent on testing. People without symptoms will probably not have a test. At the start of the autumn term students at Northumbria university were tested : 770 tested positive but only 78 had symptoms. So the cases reported (20,000 positive daily in October) will be fewer than the actual.

Who is going to hospital?

Covid hospitalization data as at 12 October below show the impact of Covid on various age groups from the start of the pandemic as follows. The "admission rate" relates to the number of people in each age group.



What this means is that

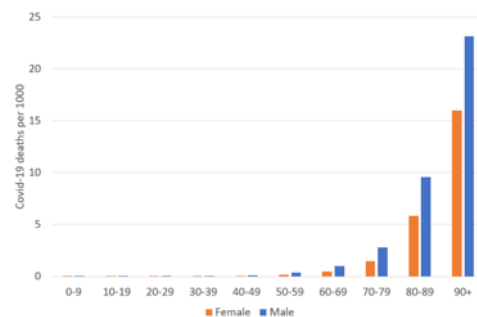
- the majority (64%) of hospital beds were used by the 65+ age group and
- hospitalization for the 65+ age group is more than 65 times school age children, and more than 5 times adults aged 18-65.

Who is dying from Covid?

ONS statistics show that between March and June (when the lockdown was eased) 46,700 deaths related to covid-19 in various age groups were as follows :

- <1 to 29 years, 78 people, with 1 in June i.e. 0.0017% of the total,
- 30 to 59 years, 820 people (with 24 in June) i.e. 0.2% of the total
- the 65+ age group accounted for 91% of the total deaths, and for those aged 70+ accounted for 85% of the total.

The following chart makes this data clear



Isolate the elderly?

Should the collateral damage of the nanny state continue - with business collapses, rising unemployment, mental illness, impaired education etc, and with inflation being the only way out of our crashed economy?

If hospitalisation is dominated by the elderly, and the risk of death is so high in this age group, should the "elderly" be isolated and prevented having uncontrolled social contact?

Provided everyone else is made aware of the risk, and the horrible effects of this disease, shouldn't everyone under, say 65 years, be allowed to "take their chances"?

But now we begin to hear about the data on "long Covid". While the elderly are more susceptible, younger people are suffering unhappy and serious effects for many weeks.

Is it too early for the younger population to know what the risks are?

MARKO writes

My dear old mum was told by her hairdresser, this week, who knows a friend, who knows a friend, who knows a scientist, "... that [SARS] COVID [19] isn't really *that* deadly."

Time to talk and explain to my mum: that despite this popular point of view (that SARS COVID 19 isn't really that deadly) that is a misconception.

At least 30,000 elderly people have died in care homes, in the UK, in 2020. Worldwide some one million *elderly or vulnerable* people have died, having succumbed to a SARS virus, (SARS-CoV 19).

To reduce the impact/ fear of SARS COVID 19, the statistic of a "reduced mortality *percentage* rate" is being cited/hawked in part for the following reasons:

- to re-assure the public.
- to underscore the internet's popular conspiracy theorists.
- to aid and abet those many members of the public seeking a reason to break out of their "Covid Chaos" and escape their own troubled "Sars-Madness".

There is no doubt that as younger people (those more resilient to the virus, that have a greater quantity of "T Cells") are now reporting symptoms and testing positive and (note) usually surviving SARS COVID-19 (because they are neither old, nor vulnerable) and this is leading to the mortality rate decreasing, when seen as an overall percentage.

This consequential statistic, has led to the percentage of the SARS COVID-19 death rate "lowering." (Increased survival stats, folded into the death figures, has reduced the percentage of people dying from SARS COVID-19).

"So, Covid isn't really *that* deadly!" QED, or is it?

Simple maths for simple people, wishing to "buy into" a simple theory that SARS Covid 19 isn't a danger after all? (despite it killing at least one million humans on our planet at the date of this report?)

Some may now use these stats to "justify" their need to go abroad, holiday (staycations), break curfews (party in large numbers) and indeed, not wear a mask, as an individual's "right" for freedom and the right to protest.

Meanwhile the elderly and vulnerable must remain vigilant and remain in lockdown. But this

takes some real British Bulldog spirit, especially whilst seeing their offspring, or the feckless, party or wander abroad apparently happy to return and

"Kill Granny." (As reported in *The Guardian*, 8th August, 2020).

As winter 2020 arrives in the UK let us hope that COVID-19's impact is reduced. That our government now has a plan to treat and save the elderly or vulnerable amongst us and that we have an NHS geared up to battle for Britain's lives.

If YOU are elderly or vulnerable (or know someone that is) then the SARS virus is deadlier to you or those than any other group. Deadlier than anyone working in the NHS, deadlier to those at work (working up to the retirement age) that have no underlying health issues.

If you remember nothing else then remember this statistic: One million people have died from SARS Covid-19 in 2020.

If you are visiting the elderly or the vulnerable, respect them. Wear a mask, wash and keep your distance.

M.O.

Sources:

1. "Don't Kill Granny." (The Guardian newspaper)
2. "The Twilight of Immunity." Janko Nikolich-Zugich (University of Arizona College of Medicine).
3. "Explaining SARS." (SARS-CoV) World Health Organisation (WHO).



Our Committee continues to meet online via Zoom and we held our AGM via Zoom on Monday 26th October starting at 7.30pm – another first for us.

Heritage Open Day: Sunday 14th September 2020

Like so many public (and private) activities, we had to cancel our Open Day @ Smallford Station this year due to the COVID pandemic.

Improving the Environment around Smallford Station

Amazingly, students from 6 Departments at Oaklands College will be involved in our exciting collaborative community project -

- Horticulture
- Art and Design
- Graphics, Multimedia and Photography
- Carpentry and Joinery
- Trowel Trades
- Special Needs

We've had on-site meetings with staff from several departments and have provided a virtual (on-line) presentation to two groups of students. At this point of time it looks like the first groups to get involved will be from the Art & Design and Agriculture Departments.

Projected Costs and Fundraising

Our latest estimates suggest that the costs of materials for our Project are quite substantial and in the region of :



£2,500 for work on the platform and around the car park



£5,000 to renovate and restore the goods van body – which will hold our exhibition

To raise these funds we'll be setting up a 'Just Giving' webpage, approach local companies and residents and apply for funding to various 'bodies' including Colney Heath Parish Council and our County Councillor.

If you'd like to make a contribution (which would be fantastic!), please email me at info@smallford.org

If you'd like to know more about us (including becoming a Friend or Member of our Society)

- ◇ Take a look at our website – www.smallford.org – where you can see part of our extensive collection of historical photographs, download several documents (including a booklet of their exhibition) and see scenes from two B&W movies (made in 1928 and 1933) showing trains arriving at the station.
- ◇ Of particular interest might be Roger Taylor's photographic collection - <https://smallford.org/the-roger-taylor-collection/>
- ◇ Email info@smallford.org

We believe that this beautiful photo was taken by Ethel Mason and shows her mum, sister and niece plus some wonderful details of the station.



Ethel Mason committed suicide at Deadman's Crossing.

It's believed that she was hit by the 4.30pm Steam Train heading towards Hatfield Station on Wednesday 22nd May, 1929... with her lifeless body found by Farm labourer Leonard Richardson from Roe Green, Hatfield just after 5.30pm that same day.

Items available from us

We have a number of items that might be of interest to you; we don't sell them – but would appreciate a donation to our funds!

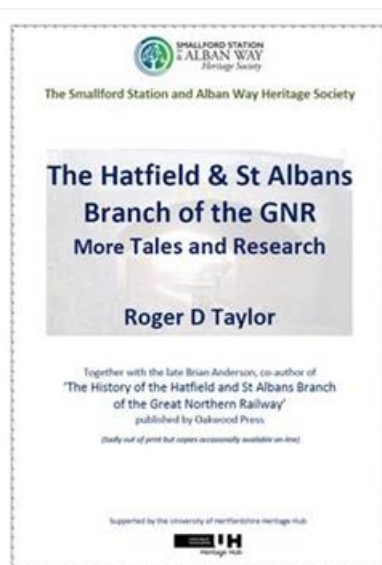
Fridge Magnets



Minimum suggested donation
£2.50 + £1 p&p

Roger Taylor's 'More Tales'

1. Introduction, Biography
2. Railway Memories
3. The Branch Line on Film
4. Specials on the Branch
5. After the Line Closure in 1969
6. Halts, an Incident & Others
7. New Research & Corrections



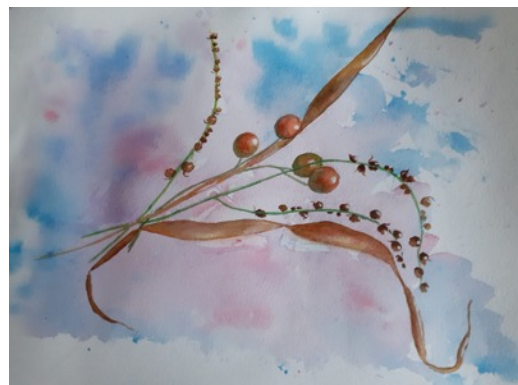
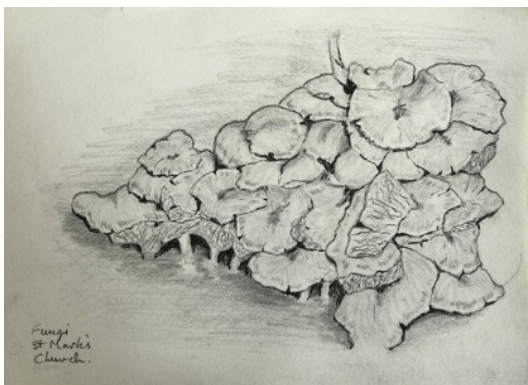
Minimum suggested
£3.00 + £1 p&p

Jeff Lewis
Chair: Smallford Station & Alban Way Heritage Society

Contact irisbond8@gmail.com

Iris' Art Group has continued to meet weekly in the Village Hall. Drawing and painting together, but suitably "socially distanced", is a great help for keep motivated, to learn from each other, and to have a weekly reason to get out. Most weeks we have had a theme; as usual some of our members chose their own topic. We have space so, if you would like to join in, contact Iris. Its £3 per session, and we pay only when we attend, so there is no commitment.

A small selection of recent work is illustrated here, reflecting the change in the season.



The WI is all about women coming together to socialise, learn new things and see friends, but as you might guess, 2020 has meant this could not happen due to the Covid-19 virus. However, Colney Heath WI were fortunate to be able to meet twice in between the easing of government restrictions and the latest 'rule of six'.

In August we held a summer social 'Pimms & Puddings' event in a member's garden. Best hats were worn at the summer social with everyone looking very summery even though the weather wasn't on our side.



In September we had our annual meeting in the Village Hall,

Both occasions required careful planning and scrupulous cleaning to ensure everyone was kept safe and well.

Of course we are not able to follow our annual programme of events but we are continuing an online book club, when the book lovers amongst us get together on Zoom to discuss our latest read.

Also our craft group is continuing to meet as-and-when safety restrictions allow. In this group craft lovers work on their own projects with mutual support and encouragement from each other.

In addition to these sub-group activities Debbie, our secretary, is keeping us in touch with regular updates from the Denman WI college who are providing a host of online learning opportunities at very reasonable prices. The range of courses include cookery, craft, history and lifestyle.

Our WI forms part of a regional and national organisation, both of which are doing their best to provide services to members during these difficult times. Hertfordshire WI have given presentations via Zoom that included a tutorial on how to use Zoom, The Life and Legacy of Anne Frank and a talk by the Herts & Middlesex Wildlife Trust. More presentations are planned for the future with details published on their website www.hertfordshire.thewi.org.uk We also receive a monthly Hertfordshire WI e-newsletter that keeps us up to date on the activities of other WIs in Hertfordshire and provides information on countywide developments.

Each year the national WI asks its members to propose new campaign topics for action. The topics put forward are diverse and wide ranging, but each member is able to vote on a shortlist of resolutions with the winner/s adopted for action over the coming year.

This year we are campaigning on two issues. Firstly, to encourage more people to sign up to the UK stem cell registry. This action will enable a greater number of patients to receive potentially life-saving stem cell transplants. And secondly a resolution that aims to raise awareness of modern slavery in the UK. It calls for better support for survivors, as well as more effective action to eradicate the problem. For more details on WI campaigns go to www.thewi.org.uk/campaigns

We always welcome new members so if you are interested in joining the WI please get in touch by email colneyheathwi@gmail.com or phone Joanna Defries, President, on 07956 502369. You can also find us on Facebook @colneyheathwi

Contact lewislesley@hotmail.co.uk

In our June report we expected to hold our annual Boules competition on 6th September as a socially distanced Boules and BYO Picnic.

Fortunately when the day came the weather was not a wash out and we enjoyed a pleasant afternoon on the Heath behind the Village Hall. Fifteen people attended, bringing food and drinks for a leisurely lunch before the game.

There were 12 contestants playing in three groups of four, all efficiently managed by John Rowland who set out the pitch on what was the closest to level ground he could find. This proved to be quite “lively” with boules ending up well away from the intended position. Several players found the rabbit hole. While we socially distanced, as usual the closeness of the boules to the *cochonnet* was all important, measured, and occasionally cause for some hot debate.

With mostly luck on their side, the final was between Pam Fox, John Clemow and Dave Howard. Dave was the winner and was presented with the trophy and a bottle of wine. Everyone agreed that it had been great to get out and be together.



Kahl family with huge picnic



Observing the rule of 6



John Rowland elegant in action



John (with gritted teeth) and Dave with trophy

With the restrictions tightening again it may be some time before we can gather together again. The Committee meets monthly on Zoom with a check on the wellbeing of our members on our agenda. Alun continues to circulate our monthly newsletter. The announcement of the winners of our 100 Club lottery monthly prize draw being a highlight.

In July some activity returned to the Village Hall.

On Mondays, Iris' Art Group meets in the morning and Badminton play in the evening.

Taekwon Do now meet on Wednesday evenings, and Saturday mornings.

Emma runs Yoga classes on Monday and Wednesday evenings.

Claire continues "Different Dog" training on Sunday afternoons.

Treasure Tots Pre-school returned after the summer holidays using the main hall during the day from Tuesday to Friday.

We have occasional bookings too, e.g. from the WI and Child Matters paediatric first aid training. From the end of November we will welcome Sport4Kids on Sunday mornings.



www.colneyheathvillagehall.com

CDA Herts and Action for Rural Communities England (ACRE) continue to guide us on the evolving "Covid-19 Secure Facility" regulations and guidance. Tim Hayward-Smith from CDA runs regular Zoom sessions with groups of village halls in Hertfordshire. These are very helpful as we share experiences and tips for products we have not had to buy before.

We have tried to make the hall feel cheerful and comfortable while meeting the safety requirements. We have clear and simple instructions for people using the hall to observe. The NHS QR code specific to our venue is available for people to scan on their NHS app. Hirers keep records of attendees at their functions for "track and trace", and submit records of the enhanced cleaning regime in place.

At present the number of people who can use the Main Hall is limited to 33, and the Community Room is limited to 8 people. The "rule of 6" is confusing some hirers, and the managers of some halls. Multiple groups of up to 6 can meet in the hall provided there is no socialization between groups. Regrettably we are not accepting childrens' or adult parties as these kinds of functions would not meet the requirements.

We have availability for Monday afternoons and in the evenings, except Monday and Wednesday. Visit our enquire page which has our bookings calendar and most of the other information needed.

<https://www.colneyheathvillagehall.com/enquire.html>

The recent increase in detected infections, and consequent tightening of restrictions on social contact, has caused some village halls to cancel some or all of the regular bookings, and for hirers to cancel. Our policy is to keep the hall open for the benefit of the community while strictly complying with the Covid-19 Secure Facility requirements. Being able to meet together is important for the social and mental welfare of many in our community.

Currently our expenditure is greater than our income from bookings but we have some "savings for a rainy day" which should keep the hall in good shape for a while. Like everyone else, we hope the pandemic will ease in the not too distant future.

COLNEY HEATH THEATRE CLUB has been running trips to the West End for the past thirteen years.

Unfortunately, due to the current situation the last three shows that we were due to see this year were sadly cancelled as the West End theatres have been closed. Clearly 2020 will not see any shows but we hope that we will be able to resume our trips at some point in 2021.

Safety is very much our first consideration and only when we can ensure a safe, comfortable and convenient way to enjoy an evening in the West End will we be reviewing our position.

If you would like to receive information on the theatre trips please either email colneyheaththeatreclub@yahoo.co.uk or telephone/text 07870701118

Colney Heath Theatre Club is a voluntarily run not for profit organisation.

OWL (Online Watch Link)

OWL is used by Hertfordshire Constabulary and local coordinators to communicate with thousands of Watch members across the county. Hertfordshire has the largest Neighbourhood Watch network in the UK with 1 in 3 homes registered on OWL. All households that have not registered with OWL are urged to do so.

From OWL and Which? reports criminals have changed their tactics to take advantage of the lockdown with online scams increasing.

The link to the 30 minute Zoom by Santander regarding online safety was very useful.

COLNEY HEATH VILLAGE FACEBOOK

As mentioned in the editorial the “Longabout works” and the planning application for 100 dwelling on Bullens Green Lane have been hot topics interspersed with locally made hot food, “hot” clothes, and the usual cornucopia of posts on many subjects.

It has rained a lot recently providing opportunity for some of the very good photographers in the village.



Posted by Zoe Michelle



Posted by MarkO