

# PARISH E-NEWS

To join the circulation list – its free – email [jackclemow@gmail.com](mailto:jackclemow@gmail.com)



News and updates from organisations in the Colney Heath Parish community including

Colney Heath village, Highfield, Hill End, Oaklands, Roestock, Smallford, Sleafshyde, and Tyttenhanger

## ISSUE 3 AUTUMN 2019

In this “Parish E-News” you will see news from, and information about, a number of sources received for inclusion in this issue.

Clicking this link <https://www.colneyheathvillagehall.com/parish-e-news.html> will take you to the website page with

- this newsletter and previous issues
- a long listing of organisations and key contacts,
- more detail about organisations, and
- a calendar of Events.

Some of the information will be updated as necessary before the next newsletter is published.

Please e-mail [jackclemow@gmail.com](mailto:jackclemow@gmail.com) (Editor, Trustee of CH Village Hall)

- If you would like to promote an organisation, an event or a cause, or to advertise a local service – there is no charge for inclusion in this digital format
- If you spot any errors, have comments, or wish to contribute to the next edition

Page

### INDEX

Editorial	2
“We were instantly homeless” – Ali’s story	3
Quiz night for Shelter UK	4
St Marks Church	5
The Post Office and Store	7
JMI School	8
Parish Council	9
Neighbourhood Plan	10
Smallford Station and Alban Way Heritage Society	11
De Havilland Aircraft Museum	13
Football and Social Club	15
The WI	16
Old Friends	17
Theatre Club	18
Iris Art Group	18
Twinning Association (CBTA)	19
Old Colney Heath Calendar	20
Colney Heath Scouts	21
Badminton Club	21
Colney Heath Village Hall	22
T.Taylor & Sons	24

## EDITORIAL

Autumn has arrived and Christmas plans have been mentioned. The Christmas story starts with a homeless family seeking shelter, so this issue starts with “we were instantly homeless” where Ali writes a moving and salutary piece about her experience, and her fund raising for Shelter UK. Ali is a brave fighter, overcoming several personal set backs (not all of which she mentions), and her efforts and cause deserve to be supported.

On page 5 **St Marks** welcomes Caroline Keightley as the new vicar. What she says about her start reinforces what I have heard about the energy and initiative she is bringing to the Church in Colney Heath.

Meanwhile at the **Parish Council**, three of the four Colney Heath ward Parish Councillors have resigned - Mark Ouzman, Cecilia Hathaway and Susan Blunt (who some of you know is my wife). On page 9 the Parish Council's expenditure in 2018/19 is noted – some of this may surprise parishioners. The good news is that the draft minutes of the Council's September meeting indicate the Frederick's Wood issue has been resolved. It is hoped that the various other issues requiring expenditure on legal fees can be closed in the near future.

The Parish Council has a really very good website [www.colneyheathparishcouncil.gov.uk](http://www.colneyheathparishcouncil.gov.uk) with a lot of relevant and important information. The detail could not possibly be shown in paper postings on the parish noticeboards which are, in effect, redundant for the publication of the complex layers of information involved. Where this leaves people who don't access the internet is an issue to be resolved. Currently the “un-internet” section of our community is disconnected. Of course this also applies to this Parish E-News which is a digital publication. As previously mentioned I hope to find a way of publishing a hardcopy this Parish E-News for delivery to each household in the Parish : maybe an “annual” as part of the 4<sup>th</sup> quarterly issue in the New Year.

Good work continues on the **Neighbourhood Plan** as reported by Mike Rawlins on page 10. This is really important work by the Parish Council which everyone in the Parish should take an interest in. Along with St Albans Local Plan and the National Planning Policy Framework (NPPF), it will become a policy document against which any future planning application in the Parish will be assessed. It will also need to include open and green spaces not listed in the St Albans Local Plan.

In the report from the **Scouts** on page 21 it seems that the continuation of their use of the Scout Hut in Roestock Park remains unresolved with the Parish Council. The Scouts have started a petition to keep their Scout Hut. It seems very hard to get an explanation of what is going on with this issue. The Scouts say they can't talk about it, as they are not allowed to due to legal constraints. Apparently the Parish Council leases Roestock Park, including the land on which the Scout Hut stands, from the St Albans District Council, for a “peppercorn” or minimal rent. But the Parish Council seem to want to get “value” from Parish owned assets. It may surprise some readers that the Parish Council asset register states the “Roestock Hut” (i.e. the Scout Hut) was acquired in February 1987 at an original cost of £558,000.

At a time of national anxiety its should be calming to hear about the good work good local organisations are doing.

The **Highfield Park Trust** offers education with pleasure with two events included on page 14. The **Smallford Station and Alban Way Heritage Society** are pursuing their work with vigour and enthusiasm.

The **de-Havilland Aircraft Museum** is making progress on their new hangar and will have much to report in the Spring.

Social groups are enjoying themselves : The **Twinning** enjoying food, drinks and games, The **Theatre Club** time out in London, the **Iris Art Group** being creative (with tea and biscuits too). The **WI** will be having talks on Motorcycle Drag Racing and how to make Christmas boxes and flowers.

A few selected dates for your diary

3 Oct	Parish Council meeting Village Hall
6 Oct	Apple Day at Highfield Park Trust
12 Oct	Amy Winehouse Tribute at Football Club
18 Oct	Smallford Station Heritage Society special meeting
19 Oct	Fund raiser at Football Club
19 Oct	Cocktails and Mocktails Twinning at Village Hall
7 Nov	Parish Council meeting Highfield Park
1 Dec	Outdoor skills at Highfield Park Trust
5 Dec	Parish Council meeting Village Hall
6 Dec	Quiz night for Shelter UK
7 Dec	Christmas event Twinning at the Village Hall

## WE WERE INSTANTLY HOMELESS

Watching TV with a nice cuppa on a cold November morning last year, you may have seen the BBC news item about a huge sinkhole that had appeared in front of a block of flats in St Albans and the residents having to be evacuated. You may have read the report that residents might not be able to return to their homes for two weeks. You might be have spared a thought for the people involved, having a worse day than you – and maybe wondered what would they do? Where would they go?.

Three days later it was reported that there was a chance that some residents could be allowed to move back in, but for others residents it was not realistic to assume anyone will be back in residence before Christmas. St Albans City and District Council was helping a handful of residents with temporary accommodation but the majority had found their own alternative places to stay.

Alison who, with her husband Darren, had to leave her home in a hurry writes:

*“On the 6<sup>th</sup> November 2018 the bottom fell out of my world, quite literally. A sinkhole the size of a small swimming pool dropped in under our flat and at 6am on a winter’s day we were instantly homeless. This cold hard slap in the face made me understand just how close be being homeless anyone can be. We all think “that would never happen to me” and fortunately most of us are right. But the wrong chain of events could leave you unable to put a roof over your head”.*

*Having two dogs, our choices of where we could go were limited. We had to send one son to be with his grandparents, another to move back in with his estranged partner and there was no room anywhere for us with the dogs. Many frantic phone calls later we managed to book three nights in an Ibis hotel. We were very grateful they would take us with the dogs, but the continual noise meant the animals were very unsettled and sleep was sparse.*

*With no cooking facilities we were living on an awful diet of cold food and takeaways, and life as we knew it started to unravel.*

*From the hotel we went into AirBNBs for five weeks, moving from place to place.*

*Then finally were told we wouldn’t be home for up to a year.*

*We are incredibly fortunate to have good jobs, understanding bosses and credit cards, but many of our neighbours were relying on St Albans City Council and agencies like Shelter to help them get a roof over their heads.*

*The insurance company accepted responsibility and we were told to go and rent somewhere to live while major repairs were undertaken. Again, large sums of money onto credit cards meant we had a rental property before Christmas, so we were lucky. A lot of our neighbours were left living squashed in with relatives and fighting to get rented accommodation as they were single parents, not earning enough, or limited savings. Finding £1,800 deposit plus £1,000 rent up front where you are only just getting by simply isn’t possible. Again Shelter and St Albans City Council were there to help provide advice and support for those less fortunate than us.*

*Watching the marathon in April, still in our rented home, I decided to run my one and only marathon for Shelter UK. I’ve been lucky enough to get a place, I’m training hard and raising absolutely as much as I can so they can help people facing and living with homelessness.*

Ali’s fundraising for Shelter UK includes a Quiz Night in the Colney Heath Village Hall on Friday 6<sup>th</sup> December – see details overpage.

If you can’t join the Quiz Night but want to support Ali’s fundraising go to <https://www.justgiving.com/fundraising/alison-chason2>

## QUIZ NIGHT FOR SHELTER UK



in support of **Shelter**

**FRIDAY 6TH DECEMBER 2019**

Arrive 7pm for 7.30pm start



**Low price licensed bar**



**Cheese board & cupcakes included**



**Raffle & Bottle tombola**



On 6th November 2018 the bottom fell out of my world, quite literally! A sink hole the size of a small swimming pool dropped in under our flats and at 6am on a winter's day we were instantly homeless. This cold, hard slap in the face made me understand just how close to being homeless anyone can be. In April, while watching the TV, I decided to run the London Marathon in 2020 in aid of Shelter UK, a charity supporting people facing homelessness. They believe, as I do, that everyone should have a home.

Please come and join me and my crack quiz team for a few hours of head scratching, thought provoking fun. 10 rounds of questions with games along the way, plus a raffle being held at:

**COLNEY HEATH VILLAGE HALL**

83 High Street, Colney Heath, Herts, St Albans AL4 0NS



**Teams of up to 8 people**



**£7.50 per team member**

**For tickets call Ali on 07581 396 144  
or email: [zumbaalista@gmail.com](mailto:zumbaalista@gmail.com)**





## Caroline is here!

The Reverend Caroline Keightley  
was  
Instituted, Inducted and Installed  
as Vicar of St. Mark's  
on  
Thursday 12<sup>th</sup> September 2019

I am delighted to introduce myself as the new Vicar of St. Mark's Church. I moved into the Vicarage with my husband Michael this summer. We have thoroughly enjoyed getting to know both the village, and the surrounding area.

I have worked for churches in various capacities for over 10 years, and spent time serving the church as a youth and community worker, leading into being ordained as Deacon, in St. Albans Cathedral in the summer of 2015. I was raised in Oxfordshire and still visit family there often. Michael is more local and has lived in Letchworth and Stevenage. He currently works in London as a manager in the IT department of Holy Trinity Brompton Church.

It's been really enjoyable getting to know the local walking spots, finding the local pub and shop, and learning about the varied community activities taking place in the school, village hall, church and beyond.

Michael is passionate about football and is pleased to hear that the local football club is flourishing. He has also just purchased a lawn tractor, so please say hello to him if you see him on it!

I am encouraged to celebrate all of the community activities already taking place in the local area, and look forward to further exploring how the church can care for all people, reach out to all ages, and give anyone an opportunity to explore their own questions of life and faith in a relaxed setting.

During the Autumn term, can I please highlight that St. Mark's Church shall continue to have its regular Sunday services and events as shown in the section below. All are welcome so please do come and join us at any of our events and services. As a new person to the area I am keen to get to know you as a community and I enjoy visiting people. If you would like a visit from me or a member of our church visiting team, please email the office at [office@stmarkscolneyheath.co.uk](mailto:office@stmarkscolneyheath.co.uk)

## Our Sunday Services

8.30am	A generally quieter and more reflective service usually with Holy Communion
10.30am	Family friendly and livelier. Children's and youth activities. Holy Communion usually on the 3 <sup>rd</sup> Sunday of the month.
7.30pm	Evening Service (not every Sunday; please check website)

## Our Regular Events

SMARTEES



**Smartees** : A toddler group for pre-school children and their parents/carers.

Every Wednesday during term time 10am-11.30am at St. Mark's Church Centre.

Snacks, toys, craft and singing. £1 donation per family (if possible)



**Relax** : At a loose end on a Friday evening? Aged between 11 and 16 years?

Why not come along to Relax? A youth social for school years 7 to 11.

Relax runs in St. Mark's Church Centre on alternate Fridays 7.30pm in term time.



**St. Mark's Craft Group.** We meet on the 1<sup>st</sup> Tuesday of every month 8pm until 10pm in the Church Centre. Always something crafty for you to have a go at, or bring whatever you are currently making and we can craft and chat over tea, coffee and biscuits.



**Coffee Morning.** 10am-12pm in the Church foyer on the 1<sup>st</sup> Thursday of every month except August. We would love to see you and your friends for coffee, tea, cakes and biscuits. Everyone welcome, adults and children.



**Messy Church.** Every 2<sup>nd</sup> Sunday 4-6pm at Colney Heath School

Games, activities, celebration, a meal together. Messy church is for everyone but if you are a child you must bring an adult along!



**The Gathering.** Every 2<sup>nd</sup> Tuesday 2pm in Church. Our monthly congregation for the older members of the community. Come and join us in a café style setting with a chance to discuss, sing and pray together followed by refreshments.

Coming soon....



**Welcome Break** Tuesday 15<sup>th</sup> October 2019 – 10.30am to 3pm at St. Mark's Church and Centre. An interactive day with a Christian message for the retired members of our community. Please contact the church office for more details.

# Colney Heath News

## Colney Heath Post Office and Store

Off licence and Convenience Store

### POST OFFICE HOURS

*Monday to Friday: 9.00am to 5.30pm*

*Saturday: 9.00am to 2.00pm, Sunday: **Closed***

Postal Services, Free cash withdrawals\*, One 4 all gift cards

Access your high street bank accounts,

Pay your bills, electric, gas, phone top up

### SHOP HOURS

*Monday to Saturday: 7.00am to 8pm*

*Sunday: 8.00am to 3.00pm*

News Papers/Magazines, Tobacco, Grocery,

Confectionary, Cold/Hot Drinks, Sandwiches,

Milk/Bread, Snacks, Ice Cream, Frozen Food and MORE...

**Card payment accepted (No minimum charges for card payments)**

***Find us on Google: 13 High Street, Colney Heath, AL4 0NS***

***Phone: 01727828144 Email: colneyheathstore@yahoo.com***

*K R. A*

## COLNEY HEATH SCHOOL



Telephone: 01727 823898  
E-mail: [admin@colneyheath.herts.sch.uk](mailto:admin@colneyheath.herts.sch.uk)  
Website: [www.colneyheath.herts.sch.uk](http://www.colneyheath.herts.sch.uk)  
Headteacher: Mr. P. Rose

### New Academic Year

The children have all started in their new classes with enthusiasm and a willingness to learn. Our Nursery and Reception pupils settled well and have had a positive start to their time at Colney Heath School.

### Sport at School

Our new sporting season has started and we hope to have similar successes as last year. Throughout the year the children will be competing against other St Albans' schools in netball, football, cross country and athletics. Some of our classes will also be learning how to play Gaelic football.



Buddy time



Buddy time



Gaelic football

### Can you help?

We are always looking for volunteers at school. It might be hearing children read or even gardening. We are also looking for new governors to support the school. If you have any skills or interested in helping the children please contact the school office.

### Nursery

We offer 15 hours nursery provision which gives children the experience of a primary school setting. This prepares them for full time education and the opportunity to be involved in whole school events such as Sports Day, Christmas performances and our Arts Festival.

If your child is born between 1<sup>st</sup> September 2014 and 31<sup>st</sup> August 2015 we have spaces for this year. Application form are available on our Admissions Page of our website [www.colneyheath.herts.sch.uk](http://www.colneyheath.herts.sch.uk) or by contacting the school office on 01727 823898. Late applications can be accepted.

### School Website

Our website is full of useful information and a calendar of events. We have a Community Page where we are happy to signpost village organisations and events.

Please visit the site to see what the children are up to and contact us if you would like advertise a community event.



## PARISH COUNCIL

The Parish Council's Annual Governance and Accountability Return 2018/19, which uses formal accounting rules, shows the expenditure in the year as follows :

Staff costs	£89,522
Interest/capital repayments	£2,575
All other costs	£206,279
<b>Total</b>	<b>£298,376</b>

It is expected that the Parish Council will, in due course, publish a quarterly and annual accounts in line with the Transparency Code. In the meantime, since November 2018 the payments authorized are shown in the minutes of the Parish Council meetings. These, with much other useful information, are on the Parish Council's excellent website which has recently been refreshed.

### Schedule of payments redacted for public inspection

The Parish Council's "redacted" record of payments is available annually for inspection by the public. The redaction is staff salaries by individual. Some of the expenses may have been accounted for in the previous year, and some may be payments that will be accounted for in the next year.

The payments are listed but not categorized. The following analysis uses categories based on some assumptions; this is not meant to be an exact breakdown of expenditure; its an approximation.

	£1000's	% of total
Staff salaries	91.2	38%
Office costs	17.8	7%
Administration costs	15.0	6%
Legal fees	34.4	14%
HR Consultant	4.2	2%
Land Mapping	9.4	4%
Landscape maintenance	37.1	15%
Waste collection	5.0	2%
Bus shelter cleaning	1.5	1%
Playground maintenance	2.6	1%
Community services and events	8.1	3%
Grants to community organisations	13.3	6%
Neighbourhood plan	1.5	1%
<b>TOTAL</b>	<b>241.1</b>	

The above excludes payments for what is understood to be "capital" expenditure projects, i.e. the playground renewal in Roestock Park (£62.6k) and Tyttenhanger (£33.3k in the year), and £10.8k for a pathway at Highfield Park. Including these, the total expenditure was £347.8k.

Some the expenses attracted interest.

- the **office costs**
- The **community services and events** sum includes
 

Wild about the Common	£429	
Community bus	£2,111	
Larks in the Parks	£1,750	
memorial benches	£3,088	Possibly a "capital project"
community lunch	£725	
- In the context of community services and events the amount spent on legal fees may be that the Parish Council's priority is to "deal with" legacy issues including the Colney Heath Football Club, the Scouts in Roestock Park, access to Frederick's Wood in Colney Heath, and access to the field behind the Charles Morris Hall in Tyttenhanger.

## NEIGHBOURHOOD PLAN

### **Current work**

We are preparing a Neighbourhood Plan for the entire Parish of Colney Heath. Once completed it will become a statutory planning document. Then along with St Albans Local Plan and the National Planning Policy Framework (NPPF), it will become a policy document against which any future planning application in the Parish will be assessed.

In broad terms our Neighbourhood Plan must align with the emerging St Albans Local Plan so much of our current work has been working through St Albans Local Planning and identifying areas which require additional policies which will be specific to Colney Heath.

St Albans Council have already indicated that we need to identify many of the green and open spaces in the Parish, so they are protected for the future. While St Albans Council have identified some of the larger open and green spaces, many which are regularly used by residents and their children were not included, so these require protecting via our Neighbourhood Plan.

In the Parish we have several statutory listed buildings but there is a listing level below that of 'Local Listing' which still gives a level of protection but is less burdensome on owner. Currently we have no Locally Listed buildings in the Parish so we are considering which, if any, buildings contribute to the character of the area and should have some protection.

As any policy included in a neighbourhood plan must be evidence based, we are aiming to carry out additional surveys and consultation events in the Parish. This must be completed before we are able to complete the first draft. Once the first draft is completed, the residents will be consulted again.

### **St Albans Local Plan**

The public hearings for St Albans Local Plan have been delayed from October 2019 to January-February 2020. This might impact on the completion date of our Neighbourhood Plan.

### **Hertsmere proposed Garden Village**

While this is outside of our Neighbourhood Plan area, if developed it will impact on the Parish and in particular Colney Heath Village. The Parish Council have responded to the last consultation and is working with London Colney Parish Council to oppose the Garden Village. We expect new proposals to be published over the coming months and we are monitoring progress.

# SMALLFORD STATION AND ALBAN WAY HERITAGE SOCIETY



## OCTOBER EVENT

**Friday 18<sup>th</sup> October 2019: 7.30-8.00pm**  
**Sapsed Room, Mansion House, Oaklands College**

Readers would be most welcome to join us – simply email [info@smallford.org](mailto:info@smallford.org) to let us know. Come and meet our enthusiastic team of volunteers and hear about our exciting collaboration with staff and students @ Oaklands College

**Light Refreshments will be provided**

The programme

**7.00pm Arrive**

**7.30pm AGM**

**8.00-9.30pm SPECIAL MEETING**

**see the Goods Van Body** that we'll be renovating – a collaborative project with staff and students @ Oaklands College  
The formal bit – around half-an-hour, perhaps less!

**Presentation on our exciting plans**

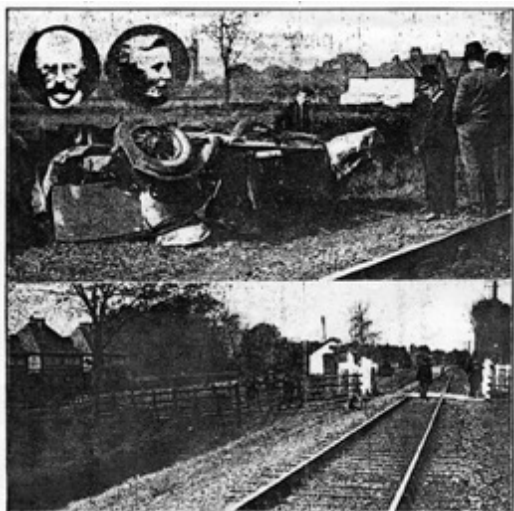
Improving the Environment around Smallford Station



Refurbishing a goods van body and installing it close to Smallford Station as a permanent site for our exhibition

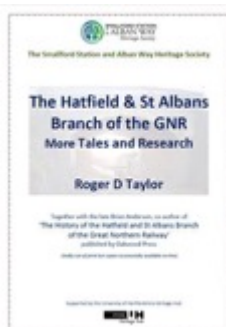


A short presentation on the circumstances of the 1928 crash at Hill End



Hill end level-crossing fatality

St. Albans man killed in terrible smash.  
Light engine wrecks motor car  
Woman seriously injured.  
Girl's warning shout apparently  
misunderstood.  
Car dragged 100 yards along line.



**A New Publication**

***The Hatfield & St Albans Branch of the GNR: More Tales and Research***

Available by post – minimum suggested donation £4.00 including postage

Email [info@smallford.org](mailto:info@smallford.org) to order your copy – please provide your address!

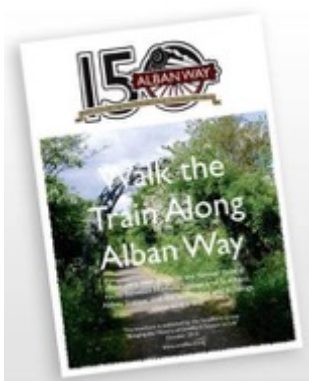
Here's Roger Taylor's update to the book that he co-authored with Brian Anderson - which provided the definitive history of the Hatfield & St Albans Branch of the GNR (Great Northern Railway).



**Fridge Magnet**

Available by post – minimum suggested donation £3.50 including postage.

Email [info@smallford.org](mailto:info@smallford.org) to order your copy – please provide your address!



**Walk the Train along the Alban Way**

Here's our illustrated Guided Walk Booklet – minimum suggested donation £4.00 including postage

Email [info@smallford.org](mailto:info@smallford.org) to order your copy – please provide your address!



### Recent Activities

- Our exhibition was at -
  - Smallford Station as part of St Albans Heritage Open Day: Saturday 14<sup>th</sup> September  
With many thanks to Colney Heath WI who provided refreshments – and some very positive energy!
  - Colney Heath Village Hall Open Day: Sunday 15<sup>th</sup> September
- We provided presentations to
  - Letchworth Arts & Leisure Transport & Industrial Heritage Group on 6th August
- Held two short guided walks along the Alban Way, from Smallford to Nast Hyde Halt and back as part of our Heritage Open Day on Saturday 14<sup>th</sup> September

### Future Activities

- |  |   |
|--|---|
| • Friday 18 <sup>th</sup> October 2019     | Our AGM and Special Meeting: See above            |
| • Tuesday 22 <sup>nd</sup> October 2019    | Presentation to Welwyn & District History Society |
| • Wednesday 12 <sup>th</sup> February 2020 | Presentation to Welham Essendon WI                |
| • Tuesday 31 <sup>st</sup> March 2020:     | Presentation to RCTS Hitchin Branch               |

We continue to be most grateful to Hertfordshire University Heritage Hub for their continuing support.

### Keep up-to-date

If you'd like to be kept informed and up-to-date on our activities and developments, you can sign up to our emailing list. Either email [info@smallford.org](mailto:info@smallford.org) or sign up on our website – [www.smallford.org/membership](http://www.smallford.org/membership)

Jeff Lewis: Chair: Smallford Station & Alban Way Heritage Society  
[info@smallford.org](mailto:info@smallford.org)

## DE HAVILLAND AIRCRAFT MUSEUM



Hopefully you are aware that we have the oldest aircraft museum in Britain at Salisbury Hall in London Colney just off the B556.

The museum is dedicated to aircraft built by the de-Havilland company who were based at Hatfield and have a number of unique exhibits including the de-Havilland Mosquito of second world war fame that was designed and built at Salisbury Hall.

Unusually, many of the exhibits can be viewed closely and some aircraft can be entered. The active restoration by teams of volunteers can be also be observed.

Currently a new hanger is on the verge of completion to house many of the museum exhibits at a cost of £2million, most of which has come from the Heritage Lottery Fund.

The Museum is open Tuesdays to Sundays until the 10<sup>th</sup> of November when it closes for the winter and reopens in February 2020 when the new Hanger will be open to the public.

## HIGHFIELD PARK TRUST



**HIGHFIELD PARK TRUST**

# APPLE DAY

**Sunday**  
**6<sup>th</sup> October**  
**2019**

**2.00 - 4.00pm**  
Highfield Park Centre  
**Russet Drive**  
**AL4 0DB**

**Apple Produce & Stalls**

- Apple Pressing
- Apple Juice
- Cider
- Apple Games
- Hunt the Apple
- Live Entertainment
- Produce
- The Apple Cafe

**A fantastic day of apples – and beyond for everyone**

Highfield Park Trust has been caring for St Albans Rural Park since 1996



## Lost skills for the outdoors

### Getting back to nature

Event at Highfield Park

Sunday 1 December 2019 1:30pm to 5:30pm

Book at [www.highfieldparktrust.co.uk/calendar](http://www.highfieldparktrust.co.uk/calendar) Tickets £15

- Do you wish that you could navigate using natural clues, such as the alignment of the stars and the position of lichen on trees?
- Are you interested in learning how to identify our winter wildlife by their tracks and signs and finding out which winter birds you can hear calling from our trees?
- Would you like to know more about building a shelter, tying knots, and other outdoor skills?

Then please join us for this special event at Highfield Park.

All proceeds from the event will go to help support the Park's aims as a charity. The exact nature of the activities covered will be tailored to the weather conditions on the day.

#### Who is this event for?

This event is intended for adults, as well as children aged 16 or 17 who are accompanied by an adult.

#### Important note about minimum numbers

In order to be able to run this event, we will need a minimum of five people booked on by the end of the day on 30 October, 2019. If there are four or fewer people booked on at this point, we will contact those people booked on to let them know about the cancellation and we will refund these people in full.

#### Event location

The event will begin at the Highfield Park Visitor Centre, where free parking is available.

## COLNEY HEATH FOOTBALL AND SOCIAL CLUB

Our progress and position in the season and our fixtures for the rest of the season are shown overleaf.

Any Community based football club like Colney Heath looks forward in competing against sides from different parts of the Country in National competitions. The FA Cup which most of you would have heard of is open to teams like us who dream of one day playing Arsenal or Manchester United.

Colney Heath went to Suffolk and won at Haverhill 6-1 and then again at Long Melford 2-0. Alas we fell at the third hurdle at home to Corby Town 1-3 in front of 245 people.

Football followers would also be aware of the National Competition called The FA Vase which is for clubs at Step 5 (that's us).

The final too is played at Wembley and we are still in this as I write and is shown on the fixture list. Next round is scheduled to be played on Saturday October 12<sup>th</sup>. Teams from our League, the Spartan South Midland League have won this previously.

**All fixtures and reports (and changes as they occur) can be found on our website**

[www.colneyheathfc.co.uk](http://www.colneyheathfc.co.uk)

Off the field the buildup to Christmas includes events planned in our diary over the next weeks and months. Some of these to look out for and attend are on the following dates.

### Saturday 28<sup>th</sup> September

Quiz Night raising funds for the Club itself.  
Always a good evening.

### Saturday 12<sup>th</sup> October

Amy Winehouse Tribute Act

### Saturday 19<sup>th</sup> October

Charity Fundraiser for Lois Parker and Clic Sargent

With Leigh Casling as 'Elvis Presley'

Lois was a member of our Bar Staff who is 20 years old with a 2 year old daughter and fighting Cancer and Raising funds for others like her.

For further details on any event phone the club on 01727 824325

Or to buy Tickets contact Laura Clarke on 07887 676040

COLNEY HEATH 1ST TEAM RESULTS 2019-20					
OPPONENTS		COMPETITION	DATE	k/o	Scorers
TRING ATHLETIC	A	LEAGUE	SAT 03-AUG	W 2-1	CLEMENTS GRIFFIN
HAREFIELD UNITED	H	LEAGUE	TUE 06-AUG	W 2-1	FITZGERALD CLARKE-MARDEL
HAVERRILL ROVERS	A	FA CUP EX PRELIMINARY	SAT 10-AUG	W 6-1	FITZGERALD WOODS 2 DOOLAN CLEMENTS BLUNDEL
DUNSTABLE TOWN	H	LEAGUE	SAT 17-AUG	W 3-0	CLEMENTS BLUNDEN CLARKE-MARDEL
SARRATT	H	CHALLENGE TROPHY 1	TUE 20-AUG	W 2-1	BLUNDEN SEARS-BLACK
LONG MELFORD	A	FA CUP PRELIMINARY	SAT 24-AUG	W 2-0	CLARKE-MARDEL 2
LONDON LIONS	H	FA VASE QUALIFYING 1	SAT 31-AUG	W 4-0	CLEMENTS DEVINE WOODS SEARS-BLACK
CORBY TOWN	H	FA CUP QUALIFYING 1	SAT 07-SEP	L 1-3	DEVINE
OXHEY JETS	A	CHARITY SHIELD 1	TUE 10-SEP	D 1-1*	DEVINE

## THE WI

Colney Heath WI had talks this quarter on protecting the green belt, how to get a good night's sleep and how to express ourselves through the outfits we wear. Each speaker has been entertaining and informative, helping to expand our knowledge and understanding of a range of topics.

In August we had an enjoyable social evening at the Colney Heath Football Club playing boules and catching up on each other's news.

In addition to monthly meetings we have a number of interest groups including a book club, a craft group and a drama group. Some of us tried our hand at bowls this summer with the help of St Albans Bowling Club. All of these activities were most enjoyable and added an extra dimension to the experience of being part of the largest voluntary women's organisation in England and Wales.



Each year every WI member in England and Wales has an opportunity to suggest an issue to campaign for. This year we have chosen to campaign for improved rural bus services and also to encourage women to be screened for cervical cancer. Both issues are of great importance to many women.

Looking forward we will be having talks on Motorcycle Drag Racing and how to make Christmas boxes and flowers. Our drama group will be entertaining us in December, an event we are all looking forward to.

We are open to women of all ages and welcome visitors to our monthly meetings with your first visit free. We meet in the Village Hall every second Thursday of the month (except August) from 7.30 to 10.00. Do come along!

For further information find us on [www.facebook.com/colneyheathwi](https://www.facebook.com/colneyheathwi) or email [colneyheathwi@gmail.com](mailto:colneyheathwi@gmail.com) or call Joanna on 07956 502 369



## OLD FRIENDS CLUB

In May our members enjoyed a leisurely boat cruise for a couple of hours on the Lea River from Broxbourne and ploughman's lunch. This was followed by an afternoon visit to Van Hague nursery which is always popular with members and guests.

In June found us in Worthing with several guests who had joined us and we all had a very enjoyable day. Unfortunately traffic problems on the M25 resulted in a late return – the poor coach driver was very tired by the time we returned.

In July we visited Oxford where members were free to amble through the historic city and enjoy lunch beside the river or wherever they chose.

Our Summer Social this year was moved to September due to the refurbishment of the kitchen at the Colney Heath Village Hall during August. Members enjoyed a delicious buffet with Ray Carter providing the entertainment, playing 60s music on the guitar. This is always a success.



On the 18th September we went to Southend which is always well supported and all enjoyed the glorious unseasonal warm weather.

Our Christmas lunch this year is being held again at The Red Lion Hatfield. This is a members only event, but we welcome new members to join our friendly and active senior citizens club.

*Colney Heath Old Friends Club meets on the first and third Mondays each month (but not on Bank Holidays) in Colney Heath Village Hall 2.00pm-3.30pm.*

*Our Club caters for the older members of the community (60+) and we can provide transport for the less mobile at a small cost. We also arrange various excursions which are popular and open to non-members.*

*Membership is £4 per year and £1 per meeting.*

Contact Pam Whiting 01727 822 000 for more information.

## COLNEY HEATH THEATRE CLUB

Colney Heath Theatre Club is a not for profit organisation which has been running trips to the West End for the past twelve years.

In July we saw **Waitress** at The Adelphi Theatre starring Ashley Roberts, formerly of the Pussycat Dolls and Blake Harrison who shot to fame in the hilarious comedy, **The Inbetweeners**.

We are now taking bookings for tickets for **& Juliet** at The Shaftesbury Theatre on 6<sup>th</sup> November 2019. This is billed as an hilariously and irreverent new musical that proves when it comes to love there is always life after Romeo. Juliet's journey of self-discovery and second chances is told through some of the most glittering pop anthems of the last three decades from legendary songwriter Max Martin, including **Baby One More Time**, **Since U Been Gone**, **Everybody (Backstreet's Back)**. Tickets for the show and coach to and from theatre are £47.00 each.

Looking forward to 2020, I will be shortly booking **Pretty Woman - The Musical** for March. More details will follow as they become available.

Colney Heath Theatre Club provides a safe, comfortable and convenient way to enjoy an evening in the West End. If you would like to receive details for any of the above shows or be included on our mailing list for news of futures shows then please contact us on at [colneyheaththeatreclub@yahoo.co.uk](mailto:colneyheaththeatreclub@yahoo.co.uk) or telephone 01727 826522.

## IRIS ART GROUP

We are a small friendly group of self-led artists of mixed ability who help each other. We have been running for 18 months now and new members are welcome. If you haven't painted or drawn since school don't worry, most of us hadn't. Sessions are run by a member of the group who will demonstrate methods and ideas - you can either join in or do your own thing.



We meet on the first Wednesday in the month, from 10am to midday in the Colney Heath Village Hall Community room, accessed via ramp to the side door to the left of the building.

The cost is £3 per session that you attend; there is no need to commit to attend or pay in advance. This pays for the hire of the room, for tea or coffee and biscuits, and to contribute a small amount to funds for extras - the group can decide, for example, to invite a guest artist to demonstrate from time to time.

If you are interested in coming along to see if you would like to join, please contact Iris Green on 07809 098 629

## COLNEY HEATH TWINNING ASSOCIATION (CBTA)

Our programme of events since the last E-News included a delicious cream tea with strawberries and bubbles on Sunday, 21 July, and our annual BBQ and Boules competition on Sunday, 8 September. **Most events are open to non-members** of the Twinning Association and offer exceptional quality and value. If you are interested in our programme of events, please contact our Secretary Lesley Lewis on 01727 822086 or via [lewislesley@hotmail.com](mailto:lewislesley@hotmail.com).

### Upcoming Events – open to non-members – contact Lesley

**Saturday, 19 October: Cocktails & Mocktails, Colney Heath Village Hall**

**Saturday, 7 December: Christmas Buffet and dance, Colney Heath Village Hall**

### Summer event



On Sunday 21 July we held our Summer event in the Community Room, a lovely afternoon of homemade scones, jam and clotted cream with Prosecco, tea and coffee. We welcomed Mark Ouzman, recently a Parish Councillor and Lorraine Davis, the village hall housekeeper. There followed an afternoon of good conversation as well as a few practice sessions of boules in readiness for our September event!

### BBQ and Boules

The sun shone for our annual BBQ and Boules event on Sunday 8<sup>th</sup> September which, as previously, was held at the Scout Hut at Roestock Playing fields. There was a good turnout of members and friends cooking their own selection of meats on the BBQ. Salads and bread were provided by the committee - all washed down with various choices of refreshments.

As usual, it was great to catch up on news, and once the feast had been consumed, it was time for the boules competition. This, in its customary style, was very competitive with several preliminary rounds, the winners of which competed in the final.



Our Chair John Clemow, who beat Alun Puddefoot in the final last year, presented the trophy to Alun who won this year's contest. John was eliminated in the first round - maybe due to an excess of "refreshments".

We also supported the Colney Heath Village Hall "Open Day" on 15<sup>th</sup> September, serving a selection of cheeses and wines to taste.

## OLD COLNEY HEATH CALENDAR

The calendar for 2020 is ready for printing and will be available for buy from early October.

This will be the ninth edition of this is a very popular historical record and celebration of people, events and places in the village from times gone by.

John Rowland continues to look for photographs and the stories behind them. If you think you may have any photos of interest John would love to hear from you.

Still at only £5 each, the Old Colney Heath Calendar is designed for Colney Heath. Usefully laid out with notes on various dates of local interest throughout the year. No need to write school holiday dates, they're printed for you. Sporting and other events are included so that you don't book your holidays when your favourite passion is taking place.

The calendar makes a great gift for family and friends, many people send them instead of Christmas cards as a special treat for their nearest and dearest.

Orders can be placed with John Rowland on 07887 931 805 or email [johnrowland2010@gmail.com](mailto:johnrowland2010@gmail.com).





## COLNEY HEATH SCOUTS

Following the Parish Council elections, the Scouts Committee met with two Councillors and the Parish Council Clerk regarding our continued use of the Scout Hut in Roestock Park.

We are disappointed by the response received from the Parish Council following their September meeting and hope our "Save Our Scouts" petition will help achieve a mutually acceptable arrangement.

We have started Scouts in the week ending Friday 11th September with a Beach Volley Ball event at Verulamium Park by the beach courts at 6:30pm. All Boys and Girls Welcome.

Thereafter the Scouts will meet every Friday from 7:30pm to learn Tent Pitching, Orienteering, Team Work etc.

We also need experienced help with an asbestos roof and installation of disabled toilets. Builders please help the impoverished 'Scouts'!!!! and contact Tom Llewellyn, [Tom.llewellyn@sky.com](mailto:Tom.llewellyn@sky.com) or 07774 693 150.

On the volunteering front we need helpers for Friday night Scouts, please contact David Gough ([davidgough1059@gmail.com](mailto:davidgough1059@gmail.com)). What would you like your boys and girls to learn?

We are always in desperate need of helpers, volunteers, fundraisers and money-money-money (how unusual!!!)

Thank you to all our helpers and volunteers.

## COLNEY HEATH BADMINTON CLUB



Badminton in Colney Heath.

Many people do not know that our Village Hall floor has a badminton court layout and the sprung floor has recently been resurfaced (the court lines are, by the way, straight!).

The Colney Heath Badminton club operates there on Monday evenings and they are looking for a couple of additional experienced players.

If you are interested contact Eddie Walsh on 01727 821601.

## COLNEY HEATH VILLAGE HALL

Since 1936 community volunteers have worked to maintain and improve the Hall. The summer holiday season is normally a quieter period in the hall providing the opportunity for the next phase of our programme to enhance the facilities at the Hall.



Set back from the High Street, the Hall has been easy to miss.

A grant awarded by the Colney Heath Parish Council contributed to the prominent roadside sign erected in August which means the Hall is both announced and easy to find.

Our thanks to Mark Edmunds who prepared the final artwork and installed the signs.

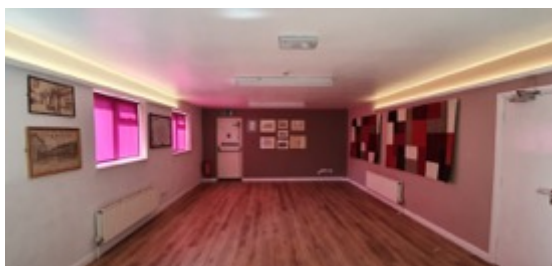
In 2015 and 2018 the Tarmac Landfill Community Fund awarded us grants for the modernization of the female and male toilets. This year, with another grant from the Tarmac Landfill Community Fund, we employed local builder T.Taylor & Sons for the complete modernization of our kitchen and the upgrading of the Community Room.



We are very grateful to the Tarmac Landfill Community Fund for their support which has been essential to achieve this latest milestone in the development of the Hall since 1936. We are delighted with the excellent quality of the work completed ahead of time and on budget by local builders, T.Taylor & Sons.

The kitchen serves both the Main Hall and the Community Room.

Fitted with a fridge and a fridge/freezer and range cooker, the kitchen caters for the needs of our wide variety of hirers.



The Community Room offers a convivial space for groups up to 30 people. Alongside meetings of organisations, wine tasting evenings, and training days etc, this is an ideal venue where a family and friends group could meet where the numbers are too large to accommodate comfortably at home.



The Main Hall is intensively used by regular hirers including  
 Badminton Club  
 Colney Heath Goshin-Ryu Ju-Jitsu Club  
 Colney Heath Taekwon Do  
 Cyclists Touring Club  
 A Different Dog  
 Old Friends Club  
 Treasure Tots  
 the WI  
 and Zumba.  
 It is also booked for children's parties, family gatherings, quiz nights, jumble sale, and concerts.

On 15<sup>th</sup> September we held an Open Afternoon and invited local residents to view the completed works, and meet the organisations that regularly hire the hall. The WI provided teas and cakes and the Twinning Association offered cheese and wine to taste.

Hirers on hand to discuss their organisations included Treasure Tots, the Cyclists Touring Club, and Zumba. The Iris' Art Group had a display of paintings and the Smallford Station Heritage Society had a display of their work.



Around 200+ visitors enjoyed the event and many provided their views on what they would like the trustees to develop. We are reviewing this feedback and will include our conclusions in the next issue of the Parish E-News.

We are in the final stage for the successor Charity to become fully operational to safeguard the Village Hall for the community and the next generations.