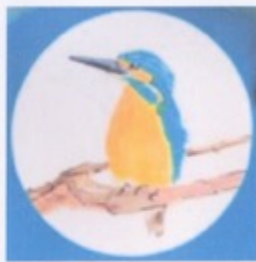


PARISH E-NEWS



News and updates from
organisations in the Colney Heath
Parish community including

Colney Heath village, Highfield,
Hill End, Oaklands, Roestock,
Smallford, Sleafshyde, and
Tyttenhanger

To join the circulation list – its free – email jackclemow@gmail.com

ISSUE 4 : JANUARY 2020

In this “Parish E-News” you will see news from, and information about, a number of sources received for inclusion in this issue.

Clicking this link <https://www.colneyheathvillagehall.com/parish-e-news.html> will take you to the website page including this newsletter and previous issues.

Please feel free to share this newsletter and to print pages for folk who don’t have e-mail.

Please e-mail jackclemow@gmail.com (Editor, Trustee of CH Village Hall) :

- If you have a story, would like to promote an organisation, an event or a cause, or to advertise a local service or business – there is no charge for inclusion in this digital format
- If you spot any errors or have comments

The next edition is planned for April.

INDEX	page
Editorial	2
Parkour	3
Colney Heath Parish History Society	4
Brownies and Guides	5
OWL (Online Watch Link)	6
British Sign language	7
Who pays, who benefits?	8
Colney Heath Cubs, Beavers & Scouts	10
Community Bus	16
St Mark's Church	17
Deacon Osborn, Taekwon-Do	19
De Havilland Aircraft Museum	21
Smallford Station and Alban Way Heritage Society	23
Colney Heath Theatre Club	25
Colney Heath Village Hall	26
Zumba	27
Colney Heath WI	29
Twinning Association (CBTA)	30
Iris' Art Group	31
U3A painting group	32
A Different Dog	33
Child Matters	34
The Post Office and Store	36
Choc “O” Bake	37

EDITORIAL

As I write, I have in front of me a copy of the Chronicle, Issue number 34 dated December 1983. The Clerk, Dudley Wood, edited the publication so it read as if he had written everything, but he noted in his editorial that some of it was based on contributions from others.

Plus ça change, but not entirely

Issues of interest in 1983 included :

- problems for Colney Heath from the M25 were covered in some detail
- the A1M link road via Tollgate Road was reported as being deferred
- the Parish Councillors and their home phone numbers were included
- there was a casual vacancy in Hill End Ward, and ten electors requested an election resulting in a contested bye-election (6 pages)
- Twinning news mentioned the village of Boissy has a "Place Colney Heath" containing the communal wash building which was shown on a map of the village. A two to three week camp in the Auvergne for French and English teenagers was planned (3 pages)
- Tyttenhanger Green won the best kept community competition
- What's On included discos at the Scouts and football club, Xmas parties for the PTA, mother and toddler club, and the Twinning Association carol concert.
- Smallford Residents Association were planting spring bulbs in the grass verges and cleared 10 tons of rubbish from Smallford Yard as part of the project to convert the old railway track into a cycleway and footpath from Hatfield to St Albans.
- those taking part in the Carnival Procession on Village Day included the Girls Brigade, the Bernese Mountain Dog Club, Guide Dogs for the Blind, the Crooked Billet, the PTA, Smallford Residents Association, Brownies, Oak School of Dancing, Old Friends Club, Twinning Association, Women's Institute, and St Mark's Church
- the football club noted they would be playing a team from Boissy in 1984
- there was a 3 page piece about the Clerk, Dudley Wood, his role and his work
- a write up on the Common, "our Botanical Paradise" with a list of around 300 species of plant that had been identified
- and ironically a catchy headline : "Scouts and Cubs – one crisis over, another begun".

There was a general election in 1983 with the incumbent Conservatives winning a second term with an increased majority.

NEW TO THIS EDITION

Parkour fitness and agility coaching in the Colney Heath Village Hall, weekly for 5-12 year olds, see page 3 for details.

The **Colney Heath Parish History Society** has been re-formed – read about the objectives and more on page 4. The Society welcomes both materials of interest and new members.

Welcome **Brownies and Guides**, read about their activities on page 5

Following contacts with the Police important information is reported on **OWL (Online Watch Link)** on page 6

Read about **British Sign Language courses** on page 7

PARISH MATTERS

In **Who pays, who benefits?** On page 8, there is an analysis of the contribution of the precept and expenditure by ward.

See page 10 for the latest on **the Colney Heath Cubs, Beavers and Scouts** who were evicted from their Scout Hut just before Christmas – perhaps a result of a misunderstanding?

Community bus use it or lose it (page 16)

NEWS from St Mark's Church (page 17) and the Community

Congratulations to Deacon Osborn of Richardson Place, on winning his black belt at the **Colney Heath Taekwon-Do School**, a remarkable achievement. Check the photo of Deacon and the black belt instructors on page 20.

The new hangar at the **deHavilland Aircraft Museum** has been completed. The new season opens on 16th February, see page 21

We have updates from the **Smallford Station and Alban Way Heritage Society** and the **Colney Heath Theatre group** on pages 23 and 25

There is increased activity at the **Colney Heath Village Hall** (page 26) and updates from organizations that use the facilities on the following pages

Physical activities : the Badminton Club, Parkour and Taekwon-Do, and **Zumba** (page 27)

Social activities : **The WI** on page 29 and the **Twining Association** on page 30

Recreation : **Iris' Art Group** and the **U3A painting group** on pages 31 and 32

Learning : **A Different Dog** and **Child Matters** on pages 33 and 34

Support your **local Post Office and Store** (page 36).

Try the delicious Choc "O" Bake's Chocolate Balls crafted by the delightful Georgina and Charlotte (page 37)

AND FINALLY.....

Copies of the 2020 Old Colney Heath Calendar are still available. Contact johnrowland2010@gmail.com or call John on 07887 931 805

With my best wishes to all readers for the coming Spring

John Clemow

Editor Parish E-News, and Trustee Colney Heath Village Hall

Email : jackclemow@gmail.com

PARKOUR

Parkour is movement.

Real movement.

Holistic movement.

Applied movement.

Our parkour specialists avoid deconstructing their movement so that it never becomes isolated, one-dimensional or purposeless.

The human body and brain are incredibly capable movers and our Academy Specialist sessions enable you to access and unleash your full potential effectively and safely.

You'll learn to run, jump, climb, swing, roll and everything else the human body is designed to do.

With a flexible curriculum designed to meet the needs of the individual, and to promote independent practice as well as guided learning, our sessions, for children from the age of 5 are the best way to channel that young, relentless energy.

All our sessions can be booked on a pay as you go basis or make a saving by checking out our class packs and membership options.

Full info and booking can be found at movementacademy.co.uk or drop us an email at parkour@movementacademy.co.uk.

We hope to see you at Colney Heath Village Hall soon. We are there every Thursday from 17:00-18:00.



COLNEY HEATH PARISH HISTORY SOCIETY

We have recently re-formed a society to discover, record, and make available local history materials for anyone who may be interested.

The scope of the local area is broadly Colney Heath Parish area including Colney Heath village, Highfield, Hill End, Oaklands, Smallford, Sleafshyde and Tyttenhanger but will extend to adjacent areas where relevant. The Society will consider material up to the present day : “today is tomorrow’s history”.

Anyone who has books, photos, maps, stories anecdotes etc of interest is invited to contact the Society’s chair (see contact details below).

There are historical records in a variety of places and part of our work will be to develop this knowledge and to provide a centralized source for ease of reference and searching.

Information on materials will be included on the Local History page on the Colney Heath Village Hall website www.colneyheathvillagehall.com and in the Parish E-News.

We plan to record memories of elders in the parish before these are lost to posterity. This has started with the Old Colney Heath Calendar, some examples are illustrated here.

Material will be collected for formal recording and preservation by the County local records office in Hertford, and we will record and publish material of local interest that is not accepted by the local records office.

We also plan to provide guidance and assistance on the use of sources to prepare and authenticate material, encouraging and offering guidance to anyone wishing to contribute articles of interest.

We also hope to organise occasional talks by invited speakers on subjects of interest to the members and the public.

Our society will meet informally 3 or 4 times each year. Membership of the society is free.

If you wish to find out more please contact John Clemow, jackclemow@gmail.com or call 07803 313 525



Potato Sorting at Sinclair's Farm

From L-R are: Albert Baldock, Fred Bean, Jack Arthurs and Jack Day. Wages in 1947 for these farm hands was £5.10.6d (£5.52½) from which 9/1d (45p) could be deducted, if they had a cottage, for rent and milk. The potatoes were stored in 100 foot long clamps. The machine's legs fitted over the clamp and it was moved along as the potatoes were dug out and loaded. At the first stage, small potatoes dropped through a shuffling mesh, leaving the good ones to move on to the elevator and drop into a sack.



Wedding of Frank Rayner and Ann Potter at The Firs 1912

The Potters have been Colney Heath residents for well over a hundred years. The girl sitting on the right of the picture is Olive Potter, the mother of Jim Whiting (of The Cock). Her father also Jim, is on the extreme right of the picture. Jim's great grandmother (Sarah) is to the left of the bridegroom, her husband Edwin is behind her. Sarah's sister Susan bought land and built the cottages numbers 19-35 near the shops in the High Street. Sadly Frank died when his first daughter, Bette, was only two years old.



The Old Common Bridge off Park Corner

These walkers dressed in classic Edwardian walking attire are posing on the old now defunct wooden bridge. They had travelled to the Heath, and by the standards of the day, had the luxury of a camera. The bridge was the only crossing at the Church end of the Heath. Brenda Hutchinson who lived on the other side of the Heath remembered as a child that when the Heath was flooded, the only way to get to the old school was on the shoulders of the water company workers, wading across wearing their full chest waders.

COLNEY HEATH BROWNIES AND GUIDES



Contact – colneyheathgirlguiding@gmail.com

Colney Heath Brownies has 25 girls and Guides has 21 girls from Colney Heath parish and St Albans. We have a great team of Leaders all with different roles, from leaders to unit helpers, people helping with admin and young leaders that have been Rainbows, Brownies and Guides in Colney Heath.

After more than three years of consultation, development and testing, Girlguiding revealed their new programme of activities. The changes to our programme are the biggest Girlguiding has seen for decades, so it's a very exciting time to part of Girlguiding UK. We are enjoying trying the new programme with the girls and learning ourselves as leaders.

In September 2019 we took 50 Brownies and Guides to Gilwell Park Scout Adventure park in Chingford for the weekend. Where the girls took part in activities such as wall climbing, 3G swing, crate stacking, go-karting, medium ropes, high ropes and coracle building.

Last term we enjoyed a Zumba class, drama class, a police officer visit, and the Old Friends Club Association visit and the girls also started working on skill builders from the new programme.

We had a Christmas film night where the Rainbows and Brownies watched Frozen and the Guides watched The Grinch.

We are looking forward to a fun packed term. We do have places for girls to join in the fun.

Rainbows 5yrs to 7yrs
Brownies 7yrs to 10yrs
Guides 10yrs to 14yrs
Young Leader/Rangers 14yrs plus.

Contact – colneyheathgirlguiding@gmail.com



POLICE MATTERS

ARE YOU ON OWL?

Online Watch Link (OWL)

OWL is an advanced solution for police & communities to grow and manage local Watch schemes. OWL provides members with the latest local alerts, information on scams, and crime prevention advice sent by email, telephone or SMS.

Our local Police contact, Sgt Mark Williams, says the sign up rate still needs to be improved across the Parish.

In our area there are a number of Watch schemes including Neighbourhood, Allotment, Business, Dog, Farm, Heritage, Horse, Pub, School, Shop and Taxi.

OWL is used by Hertfordshire Constabulary and local coordinators to communicate with thousands of watch members across the county. Hertfordshire has the largest Neighbourhood Watch network in the UK with 1 in 3 homes registered on OWL.

All households that have not registered with OWL are urged to do so. Its very easy.

Simply open <https://www.owl.co.uk/herts/> , choose the scheme(s) you want to join, enter your postcode,



and then complete the registration form.

If you know someone who wants to join but does not access the internet, help them register their phone number to receive alerts.

The best deterrent for crime is that criminals feel there may be a near certainty of being caught. The public, with the police, can deter crime through effective Watch schemes which are greatly enhanced by the OWL (Online Watch Link) system.

Derrick Sweeney is the Watch Liaison Officer
e-mail wlo@herts.pnn.police.uk

COURSES AT OAKLANDS

Thanks to Jeff Lewis, Smallford Residents Association, for forwarding an OWL notice with a link to relevant courses at Oaklands College for people 65+.

Internet & Staying Safe Online

Mon 3 Feb - 9 Mar, 2-4pm (5 weeks) Oaklands College, WGC Campus Code: CL248C1P

Fraud and cyber-crime are the fastest-growing crimes. This course will improve your mouse and keyboard skills, show you how to access secure websites and safely shopping online.

Fri 6 & Fri 13 March, 10am-1pm (2 weeks)

St Albans District & Council Offices Code: CL191B1P

Getting to grips with your Smartphone

Fri 6 & Fri 13 March, 10am-1pm (2 weeks)

St Albans District & Council Offices Code: CL191B1P

Get more out of your smartphone in these practical sessions where we will explore applications (apps), how to search, download and delete them, phone storage, transferring pictures and how you can amend your phone settings.

Memoir Writing

Wed 26 Feb - 25 Mar, 10am-12pm (5 weeks)

Oaklands Borehamwood Code: CL226B1P

Our memories are the most precious thing we have. This course will help you capture yours in writing, both for yourself and your family. It will provide you with expert training from a professional writer. Learn how to plan your memoirs and start the process of putting your life into words.

Mindfulness for Daily Living

Fri 28 Feb - 27 Mar, 10am-12pm (5 weeks)

St Albans District & Council Offices Code: CL092E1P

Learn how to bring the mind to rest. Understand the basics of mindful living. Learn simple meditation techniques. Practice mindful meditation. Reap the benefits of emotional and mental health that mindfulness can provide.

These courses are free of charge, however a small registration fee of £10 applies for the Mindfulness, Memoir Writing and Staying Safe Online courses. If the dates above don't suit you contact Oaklands as courses may be repeated in the year.

Enquire and book

01727 737 000

acl@oaklands.ac.uk

BRITISH SIGN LANGUAGE

British Sign Language (BSL) is a sign language used in the United Kingdom, and is the first or preferred language of some deaf people in the UK. There are 125,000 deaf adults in the UK who use BSL, plus an estimated 20,000 children.

The language makes use of space and involves movement of the hands, body, face, and head. Many thousands of people who are not deaf also use BSL, as hearing relatives of deaf people, sign language interpreters, or as a result of other contact with the British deaf community.

The BSL Centre, Heathlands

British Sign Language courses Levels 1-6 are available at the BSL Centre Heathlands. These courses are delivered by highly qualified and award winning teachers. All courses are assessed through a recognised awarding body. We also offer Deaf Awareness Training and workshops tailored to meet the needs of individuals or businesses.

The BSL Centre is located at Heathlands School, St Albans. For many years Heathlands has been a recognised Centre of Excellence in the field of education of Deaf children with a reputation for outstanding and innovative practice.

The BSL Centre is designed and equipped with superb ICT facilities and a wide range of other resources to support Deaf awareness and the learning of BSL. It's establishment means Heathlands' expertise, experience and facilities can be shared with our partner schools and the community. We now are one of the biggest and most successful providers of BSL courses in the area.

Heathlands BSL Centre is an active participant in developments around the teaching of sign language. The services we offer are continually being extended to meet the increasing demand from our community partners.

For more information on available courses and enrolment, e-mail bsl@hethlands.herts.sch.uk or call 01727 807 228



WHO PAYS, WHO BENEFITS?

There was a very interesting response on the Colney Heath Parish Council (CHPC) website to an important Freedom of Information request in November 2018, made in the run up to the 2019 local election. The response has been removed from the CHPC website.

The questions related to the amount of CHPC expenditure on, and precept income from, the 3 wards (the precept is a proportion of Council Tax allocated to Parish Councils). A view was expressed by some Parish Councillors that Highfield Ward is 40% of the Parish but contributed the most, and over 75% of the CHPC's expenditure is on Colney Heath.

The conclusions from the analysis set out below confirm this view :

- Highfield Ward households do contribute proportionately more than Colney Heath ward or Hill End ward and
- Around 90% of the Parish Council's "routine expenditure" was spent in Colney Heath ward in 2018/19.

Research and analysis used the following data:

Source	Data
St Albans City and District Council	Electors per ward in 2018
St Albans City and District Council	Council tax band for all addresses in the Parish 2018
St Albans City and District Council	Council tax per band
CHPC	Expenditure for financial year ended March 2019
CHPC	Asset register

Electors per ward

	Number	
Colney Heath Ward	1,852	41.0%
Highfield Ward	1,866	41.3%
Hill End Ward	799	17.7%

Households per ward (with a Council Tax band)

	Number	
Colney Heath Ward	982	43%
Highfield Ward	953	41%
Hill End Ward	366	16%

Precept : contribution per ward

Colney Heath Ward	40%
Highfield Ward	43%
Hill End Ward	17%

The above shows that

Highfield Ward is 41% of households but contribute 43% of the CHPC precept income
Colney Heath Ward is 43% of households but contribute 41% of the CHPC precept income
while Hill End's contribution is fairly balanced with the number of electors and households.

Expenditure per ward requires more interpretation of the data.

The CHPC's expenditure for 2018-19 as noted in the Parish E-News Autumn Issue 3 may be summarized as follows :

	£000's	
Staff, office and administration	130.9	Costs to administer all wards
Legal fees	33.1	"legacy issues"
Knight Frank Mapping	9.4	"On off" cost
Landscape maintenance	37.1	Routine operational costs
Waste collection	5.0	Routine operational costs
Bus shelter cleaning	1.5	Routine operational costs
Playground maintenance	2.6	Routine operational costs
Community services/events	8.1	Discretionary expenditure
Grants to community organisations	13.3	Discretionary expenditure
	<hr/> 241.0	

This is a snapshot of payments made in the 12 month period, some of which may be allocated to the previous or following year. For the CHPC's accounts see the document

"Signed CHPC annual return for year ending 31st March 2019 on the CHPC website

<https://www.colneyheathparishcouncil.gov.uk/audit/> . This shows the income and expenditure allocating costs to the year (under accounting rules for accruals and prepayments etc).

Allocation of the costs to ward is not provided by the CHPC so some interpretation is required, but the following suggests how the routine operational costs and discretionary expenditure may be allocated : .

	Colney Heath ward	Highfield ward	Hill End ward	
Landscape maintenance	33,733	3,415		Grass cutting
Waste collection	4,954			Dog waste
Bus shelter cleaning	1,040	297	149	
Playground maintenance	1,278	1,278		
	88.9%	10.8%	0.3%	
Community services/events	4,521	511		
	90%	10%		
Grants	3,837	9,500		See note below
	29%	71%		
Total	49,363	15,001		
	76%	24%		

Note 1 : of the £9,500 in Highfield ward £8,000 comprised grants to the Charles Morris Hall (awarded with conditions) in the years 2015/16 and 2016/17 but not paid until the year 2018/19.

COLNEY HEATH CUBS, BEAVERS AND SCOUTS

Apologies for this rather long and detailed piece but it is important not only for the Cubs, Beavers and Scouts but also for

- the **Football Club** : their lease from the Colney Heath Parish Council (CHPC) expires next year
- the **Charles Morris Hall** in Tyttenhanger: their lease from the CHPC expires in 2025
- the **Colney Heath Village Hall** : who have a long “debate” over the CHPC’s office space at the Hall,
- issues relating to **properties adjoining the Heath**
- concern at the legalistic approach by the CHPC to community organisations and **the level of expenditure on legal fees**,
- **Councillor resignations** within a few months of the May 2019 election, and
- other issues **perceived by some to be** to the detriment of the community such as the demise of the annual fun fair, larks in the parks, and the Chronicle; notice boards not updated and so on.

CUBS, BEAVERS AND SCOUTS EVICTED

The CHPC issued an eviction letter dated 13th December 2019 to the Scouts. This was accompanied by a second letter offering a license to use the hut on three specified evenings a week, and keys to the hut if they signed.

The Scouts responded stating

The Council’s proposal restricts our use to evenings for Beavers on Tuesdays, Cubs on Wednesdays and Scouts on Fridays. Currently in the evenings, Cubs meet on Wednesdays, Beavers on Thursdays and Scouts on Fridays.

[note not the same days the CHPC proposed]

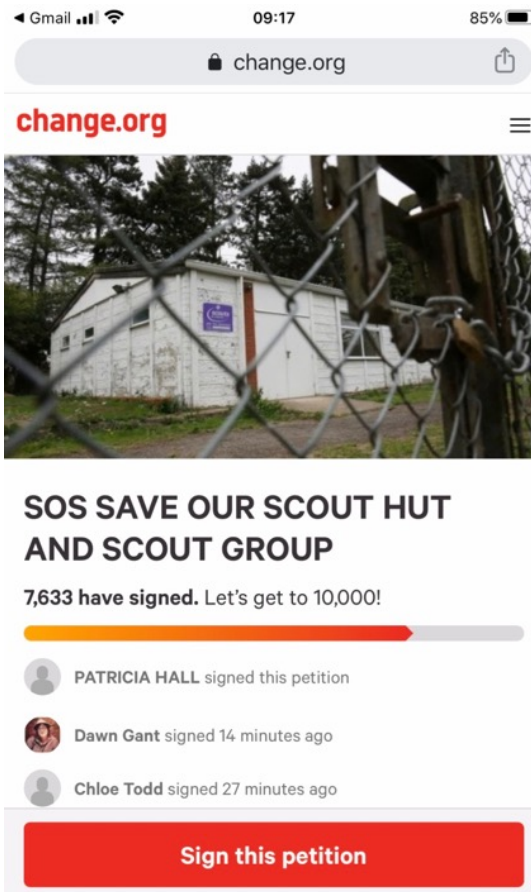
On Saturdays football gear for the Cubs matches is collected and returned. Equipment for camping is made available for pick up on Mondays or Tuesday or Wednesdays and then collected on Fridays or Saturdays and returned on Sundays, much of this equipment is placed in the hall to dry out – this can take several days. Committee meetings are held on Mondays or Tuesdays. Sleepovers are held on Fridays with Pick up on Saturdays, or Saturdays with pick up on Sundays.

If we were to be restricted as proposed, we would like to understand which of these activities the Council proposes we cease to offer to the children.

The CHPC have apparently not yet responded with their suggestions on what activities should no longer be offered by the Scouts.

THE COMMUNITY REACTION

The community’s reaction is reflected by the posters on the roundabout in the village, and the petition on Change.org – over 7,600 have signed at the time of writing.



change.org

SOS SAVE OUR SCOUT HUT AND SCOUT GROUP

7,633 have signed. Let's get to 10,000!

PATRICIA HALL signed this petition

Dawn Gant signed 14 minutes ago

Chloe Todd signed 27 minutes ago

Sign this petition

PARISH COUNCIL MEETING 16 JANUARY 2020

The Parish Council meeting on 16th January was rather untidy and unfortunate.

Not counted, but maybe around 40 members of the public attended the meeting space by the CHPC's office in Highfield Park. The "Roestock Hut" (as the CHPC call the Scout Hut) was item 7, near the end on the agenda. This is a good place to "bury bad news" as any attendees remaining so late in the meeting are usually comatose with boredom.

The CHPC's rules for conducting meetings defined in their Standing Orders, see <https://www.colneyheathparishcouncil.gov.uk/wp-content/uploads/2019/06/CHPC-Standing-Orders-Revised-16-May-2019.pdf>, are aligned with the standards published by the National Association of Local Councils. These rules help avoid public "mob" elements disrupting Councils from conducting their business.

However, the Clerk and Chairman, can misapply these rules to obstruct difficult Councillors and to control public contribution.

At the beginning of the meeting the Chairman, Cllr Chris Brazier (elected to the Parish Council in May 2019), stated agenda item 7 had been withdrawn on the request of an e-mail dated 10 January from the Scouts' District Commissioner, Annette Payne, and the matter would not be discussed.

This resulted in a raucous reaction from the public. Concern was expressed at a published agenda item being pulled by an external party. Unhappy, but quite amusing to some, insults were cast at some of the Councillors.

The Scouts had, it is understood, obtained prior agreement from the CHPC Chairman to make a statement around 8 minutes long during the Questions from the Public item (which is at the start of the meeting). In the event only 3 minutes were allowed (although the Chairman apparently has discretion to allow more, and did so for a member of the public at the December CHPC meeting).

Tom Llewellyn, Colney Heath Scout Group Chairman, read out part of the statement he had hoped to deliver and was roundly applauded.

After other questions and comments, many of the public left.

Later, when the meeting got to agenda item 7, it turned out the Scouts' District Commissioner had not requested the discussion on the Scouts should be withdrawn. A print, allegedly of the e-mail dated 10 January 2020 from the Scouts Commissioner to Chris Brazier is reproduced below. If this is genuine, those inclined to conspiracy theories will read much into this situation.

Annette Payne Fri, Jan 10, 12:00 PM (3 days ago)

to me

Dear Chris

I am so sorry this has happened I know how hard you have all worked on behalf of the Scouts. I had no knowledge of the petition until I was asked to sign it and so did not agree the text before it was published. I believe it should have mentioned your efforts to help.

I have appointed a very experienced person to help negotiate between the Scout group and the Parish Council and he would like to talk to you to establish the facts of the case. Would you be happy to talk to him? His name is David Barker. He would be happy for you to call him today on [REDACTED]

Alternatively I would be happy to talk on [REDACTED]

Best wishes

SCOUTS STATEMENT REFERRED TO IN PUBLIC QUESTIONS – FULL COUNCIL 16th JANUARY 2020

Text of statement in link published on the CHPC website

My name is Tom Llewellyn and I am the current Colney Heath Scout Group Chairman. I know you are all very aware of the ongoing saga over the renewal of the lease for the Scout headquarters in Roestock Park.

The Scout Group has played an active and important role in the community of Colney Heath Parish for nearly 60 years. For the last 40 of these we have enjoyed offering opportunities to thousands of young people from our base in Roestock Park. The Scout hut was built by the local Scout and Guide community for the local community with all the money being raised by the Scouts, Guides, leaders and supporters of the group.

During the last 40 years, the Scout Group has been financially independent. There has never been any financial liability to the Parish Council and we have always met all of our responsibilities around governance, statutory responsibilities and compliance. The Scout Group has been responsible for, and has always paid in full, the rent, insurance, upkeep and running cost of the Headquarters. In addition, like many Scout Groups across the UK, we have benefitted from a nominal rent to the Parish Council for use of the land - until 2016 this was set at £50 per year. During this time we have been very grateful for the long standing and positive support that we have received from the Parish Council.

In 2016 that all changed when our 1996 lease on the land expired.

The Parish Council minutes for Dec 2016 stated: *"The Scout hut were chasing their lease. Cllr Cook commented that due to the type of lease they would be getting it was just a case of renegotiating the terms and this would be done at a later date"*.

As the 1996 land lease was issued in 1997, some 9 months after the original lease had expired, we were not perturbed. However, since 2016 we have been trying in vain to come to a sensible and acceptable agreement with representatives of the Parish Council to ensure that Scouting can continue to offer opportunities to local young people and adults.

Since 2017 these negotiations have become increasingly difficult, extremely protracted and in our view unreasonable. It is our understanding that the sole reason that the council has cited for non-renewal of our lease is that the current condition of the headquarters is not in accordance with the lease covenants. The Scout Group has always accepted there is some rectification work required on the building. We have consistently stated that we are prepared to look at a proactive programme of work to improve the building. To date, we find ourselves in a chicken and egg situation: the council being unwilling to renew our lease unless remedial works are undertaken, and the Scout Group not prepared to invest in such a programme without certainty over our longer term future.

On this particular note we would like to formally record our thanks to members of the Parish Council for the initial enquiries made around funding the Scout Group could potentially secure to assist with any remedial work.

Over the last two years we have seen an increasingly legalistic and aggressive stance taken by the Parish Council. A number of proposals have been put to us, one of these suggesting that our rent is increased from £50 per annum to £15,000 per annum which was clearly untenable and unaffordable. Proposals presented to date have suggested that the Parish Council take over the ownership of the Scout Headquarters meaning that access for the Scouts would be restricted. This is an unworkable and unacceptable proposal which would prevent our ability to run the Group and provide Scouting to young people across the parish.

The Scout HQ is busy across the week with section meetings. Regular access is required to pick up and return our equipment, as well as committee meetings, fundraising activities and other ad-hoc events involved in the day to day running of a Scout Group. As such, the group needs constant access to the entirety of the site without any restriction.

In addition to Scout Group activities there has been a long tradition of the building being made available for the local community to use (for a nominal fee). These activities have helped us to raise additional funds to run the group.

We have informed the Parish Council that we would be very willing to accept more than a doubling of our annual rent for another 20 year lease which would secure the future of Scouting in the Parish. As part of this agreement, the Scout Group would provide a clear programme of work to rectify any immediate issues which posed a threat to the compliance of the lease. To date this offer has been refused by the Council leading us into a hugely unsatisfactory position where we were evicted days before Christmas with the locks changed preventing access to our property.

Additionally, the Parish Council are continually referring to our Scout Headquarters as the Roestock hut. This is inaccurate and we feel it's unhelpful, confrontational and has created confusion in the village.

Last Friday at 6pm we received a 12 page 'licence' from the Council and their legal advisors which we have been requested to sign immediately if we want access to be temporarily returned. The licence would allow us restricted access to our own headquarters only until April 2020 in return for a rent of £1. Clearly we need time to properly study and assess this proposal and take legal advice before making any judgement or decision to sign. As such, we had no alternative but to make emergency arrangements for the Scout Troop this week and cancel the Cub Scout and Beaver Scout meetings that were due to take place. The real losers in all of this are the young people.

We are a small group with limited funds and clearly have been unable to spend large sums required for legal advice. However, if the Parish Council persist in a such a legalistic approach we intend to rally our supporter base in order to raise the necessary funds for long term senior legal advice. We would far prefer our money to be used supporting young people in the Parish and it is our strong desire to urgently resolve things.

Clearly it is in the interests of all parties to resolve this current impasse as soon as possible and I request a formal meeting with all of the Parish Councillors to discuss this issue face to face. You will have seen from a recent petition there is a strong strength of feeling about this issue, not just from significant numbers of parishioners, but from a growing movement of people further afield who will have benefitted from the opportunities that Scouting in Colney Heath gave to them either as children themselves or to members of their family. To date over 7,000 people have signed a petition in support of the Scout Group and our job now is to collectively bring this sorry state to a sensible conclusion.

Finally, as I close I would like to reflect on the strapline of the Parish Council - 'Serving the Community'. The Good Councillor Guide states that councillors "have a responsibility to be well-informed, especially about diverse local views. You cannot assume that you represent the interest of all your electors without consulting them" and "the best local councils want to foster vibrant and flourishing communities to improve the quality of life for people living in the local area".

I would ask the meeting to consider what consultation has taken place and how the community flourishes by evicting the Scouts and sequestering our building. I hope that together with the councillors here this evening we are able to arrive at an acceptable resolution and restore the confidence and faith of a significant and growing number of parishioners who are concerned about the events to date and the actions of its parish council.

I will provide you with a written copy of this statement for inclusion in the minutes from today's meeting so that it is on the public record. Thank you. Tom Llewellyn Chairman Colney Heath Scout Group

It is understood that the CHPC have met representatives of the Scouts to discuss the issue. It is hoped a sensible and good solution will be found for the benefit of the young people in the community.

There is no profit in dwelling on "what if" this matter had been dealt with in a different way. "We are where we are" as they say.

But one cannot help wondering what was really behind the CHPC's conduct in this affair, and why a different and more positive approach was not pursued. Did they misunderstand how a Scout Hut functions (clearly explained in Tom Llewellyn's statement above)? Perhaps none of the Councillors have been Scouts or Guides.

The CHPC should seriously review how they got to this position that is unfortunate for them, the Scouts' organization, and the children and parents involved.

So, how was this state of affairs reached?

Without access to the exchanges between the CHPC and Scouts a narrative can be formed from the public records on the CHPC's website – minutes of Council Meetings and responses to Freedom of Information requests.

This narrative is set out below.

NARRATIVE BASED ON CHPC MEETING MINUTES AND FREEDOM OF INFORMATION (FOI)

All references to dates are CHPC Full Council meetings unless otherwise noted.
The minutes are, in places, difficult to understand.

December 2016

The Scouts were chasing their lease. It was noted *due to the type of lease this was just a matter of renegotiating the terms and this would be done at a later date.*

June 2017

CHPC decided to have an asbestos survey and a full survey for commercial purposes.

Why the CHPC was interested in asbestos and a commercial survey is not recorded.

September 2017

The asbestos survey was received and the CHPC commissioned a “structural survey” to be able to determine a rent figure.

[As the previous land lease had been a nominal rent of £50 a year it is not clear what policy the CHPC was following regarding its leased assets].

November 2017

The Commercial Building Survey was received and action was required on remedial works on page 7 as a matter of urgency.

This report did not place a value on the building. The report noted the surveyor had not estimated the cost of the items requiring action but this could be prepared. The Scouts were informed.

[It is not recorded whether an estimate of the remedial costs was prepared].

December 2017

The Scouts wrote a letter requesting a lease. The CHPC sought legal advice.

February 2018

The CHPC agreed a commercial valuation of the building be sought.

On 2nd May 2018 the CHPC added the “Roestock Hut” to their asset register with a value of £558,000. The asset register also states the CHPC acquired the building in 1987 at an original cost of £558,000 for the same value (FOI responses).

“Clarifying” this acquisition (FOI response December 2019), the CHPC notes that *“No money was involved. The building being vested in the Parish Council ownership happened by operation of law.”*

May 2018 (meeting held on 10th May)

A curious and opaque meeting minute.

It refers to a meeting on 23rd April, but it is not stated who the meeting was with. The Clerk was asked to send a response to the “Custodian Trustee” (its not clear who this is) confirming the options presented to the Scouts (which are not stated) and *no Councillors attending the joint meeting agreed to send any documentation, but all verbally urged them to obtain their own legal advice on the matter.*

June 2018

Notes that the CHPC had advised the Scouts to obtain legal advice and now referred to the Scouts as “occupants”. The CHPC believed they had made reasonable offers to the Scouts - but what these offers were is not stated.

July 2018

A meeting with the Scouts had been held *“The situation was that of stalemate.”* The CHPC agreed to *“obtain a further clearer letter that contained reference to the ownership of the building and exactly why the determination had been made”*.

It is not stated from whom the “clearer letter” would come.

August 2018

Chris Brazier, at this time the District Councillor, met the St Albans District Council (SADC) Chief Exec and legal team to discuss the Roestock Park Scout Hut (sic).

September 2018

CHPC disappointed the issue had been reviewed with SADC

October 2018

In response to CHPC’s questions to SADC, it is noted that SADC said *“no meeting was held. The Chief Exec had asked the Council’s Solicitor to take a view.”*

November 2018

The CHPC agreed the hut was to be added to the CHPC’s insurance policy.

December 2018

Lawyers had been instructed by the Scouts

From this date the CHPC minutes do not provide many useful clues for our narrative.

In May 2019 Chris Brazier was elected as a Parish Councillor for Highfield Ward and elected Chairman.

June 2019

Background information was given including a brief definition of a s26 and counter notice. The CHPC proposed *“that a 3 month extension be agreed in writing with a further attempt to be made to reach an agreement.”* What exactly this minute means is unclear.

November 2019

It is noted the Councillors *were not minded to agree with the solicitors advice to move to an eviction notice.*

December 2019

“After extensive debate it was proposed by Cllr Solts and seconded by Cllr Cook that two letters would be sent to the 1st Colney Heath Scout Group on 13th December 2019. The first would be an eviction notice, this was not to remove the scouts from the building but was a legal requirement. The second letter would be an offer of a licence from 6 January 2020 to 6 April 2020, the first term of the new year, (confirmed by Cllr H Brazier) at a peppercorn rent of £1 and only payable if demanded. This would be a sessional licence only and the Council would change the keys and issue new keys if the agreement when the agreement was signed”.

For the complete minute see

<https://www.colneyheathparishcouncil.gov.uk/wp-content/uploads/2020/01/December-2020-Signed-Minutes.pdf>

THE NEXT MEETING IS BOOKED IN COLNEY HEATH VILLAGE HALL, 7.30PM ON THURSDAY 20TH FEBRUARY 2020

As many residents may now be raised from disinterest, and may attend more CHPC meetings, it may be useful to understand the “public” nature of Council meetings.

The Local Authorities (Executive Arrangements) (Meetings and Access to Information) (England) Regulations 2012 defines a “public meeting” as a meeting of the decision-making body and states a meeting of a decision-making body must be open to the public.

However, it is not a “meeting of the public” in the sense that the public cannot participate other than in the “Questions” (this includes public statements, representations, and evidence). Apparently there is no time limit to provide written answers to questions raised at a Council meeting, and no obligation to answer questions at, or after, the meeting. To get a written answer a Freedom of Information request can be made and should be answered within 20 working days. The CHPC website explains FOI and how to apply.

<https://www.colneyheathparishcouncil.gov.uk/policies-of-the-council/freedom-of-information/>

ROESTOCK HUT, CHPC

STATEMENT – 13 December 2019

Colney Heath Parish Council is not preventing the 1st Colney Heath Scout Group from using Roestock Hut.

The Parish Council is protecting the interests of both the Scout Group and the Parish Council from being in breach of the legal process. This must be followed so that the insurance on the building and the public liability insurance remain valid for all users of the building who are predominantly children. The Council’s main concern is the safety of them and all users.

The Parish Council is aware that the 1st Colney Heath Scout and Guide Group have run from the building since the 1970s. Due to the building’s age it requires some attention in terms of safety requirements and improvements.

It is vital that the building is regularly inspected and checked with scheduled maintenance. There are certain legislative changes which must be implemented to return the building to a usable standard.

The 1st Colney Heath Scout and Guide Group maintained a lease from Colney Heath Parish Council that ran out in September 2016. Girlguiding UK moved out of the building in December 2017 citing safeguarding of their members and liability on their leaders as key factors in this decision.

1st Colney Heath Scout Group remained in the building and both parties are negotiating a future agreement and flexible rent, based on usage. While negotiations continue an agreement was made to allow the 1st Colney Heath Scout Group to remain in the building on a licence basis and pay a peppercorn rent.

Colney Heath Parish Council is carrying out its statutory duty to retain appropriate and adequate insurance cover and is following solicitor’s advice by serving a formal eviction notice.

CHPC primary vision for the Roestock Hut is to work with the wider community and not evict organisations from our leased land. However, we must follow clear guidelines to ensure that we are fully compliant with legislation and our own corporate governance policies to ensure that we remove any risk to those using the building along with those who pay and contribute locally to the Precept.

Roestock Hut remains an important community asset of this Parish.

If you have any events booked in Roestock Hut via the Scouts, please contact the Clerk of the Council on 01727 825314 or email clerk@colneyheathparishcouncil.gov.uk where you can discuss your options.

COMMUNITY BUS

USE IT OR LOSE IT

This community bus service has been running for many years now. It is not just for senior citizens but for everyone in the community. However, please note that we cannot take children of any age due to the child-seat laws.

The bus can travel throughout the parish to collect passengers every Thursday morning.

There is a courier on the bus to assist passengers and to collect the very reasonable £2 return fare.

It is a door-to-door service, that is your door to Asda's!

This service is run by the Parish Council but all the bus crew are very friendly volunteers.

Please call Debbie on 01727 824185 to book your seat.



COMMUNITY SHOPPING BUS Colney Heath to Asda, Hatfield

Every Thursday Morning

Pick up in Colney Heath from around 9.45 am. Returning around noon

Fee £2.00 return

Any adult in the community is welcome to use the service including able bodied and disabled persons (but we regret we not able to take motorised or battery wheelchairs).

Please note that owing to the child-seat laws we cannot take children of any age on the bus.

Limited space available so prior booking is essential.

For further information and to book your place
please call Debbie on 01727 824185

USE IT OR LOSE IT !



Settling into Colney Heath and St. Mark's Church has been a real pleasure.

I have enjoyed attending community events such as the Winter Wonderland held at the school.

Christmas services at St. Mark's were full and it was a wonderful opportunity to meet people whilst celebrating the birth of Jesus.

As we look to the new year, St. Mark's seeks to help everyone, whatever their age, to flourish and reach their potential. We look to Easter with eagerness and excitement as we continue to be inspired by the life of Jesus and we will be hosting events that welcome all ages.



OUR EASTER SERVICES

Palm Sunday 5TH April 8.30am and 10.30am
Maundy Thursday Communion Service 9TH April 7.30pm
Good Friday 10TH April 10.30am also Messy Easter* 4pm
EASTER SUNDAY 12TH April 8.30am and 10.30am
*Messy Easter is held at Colney Heath School 4pm-6pm

EVENING ALPHA

We will be running an Alpha course on Thursday evenings 8pm-9.30pm in church starting on the 23rd January for eight weeks.

Alpha is a chance to explore life and the Christian faith in a friendly, open and informal environment. If you would like to come along or if you want to know any more about this course then please do contact the church office on 01727 825175 or email us: office@stmarkscolneyheath.co.uk



May I take this opportunity to say Happy New Year and encourage us to reflect upon the Bible verse that says "Be still and know that I am God" (Psalm 46). A reminder to pause and trust that God is with us in the highs and lows of life.

Rev. Caroline Keightly

Our Sunday Services

8.30am A generally quieter and more reflective service usually with Holy Communion
10.30am Family friendly and livelier. Children's and youth activities. Holy Communion usually on the 3rd Sunday of the month.
7.30pm Evening Service (not every Sunday; please check website)

ST MARK'S CHURCH



COMING SOON

Welcome Break Tuesday 25th February 2020 – 10.30am to 3pm at St. Mark's Church and Centre. An interactive day with a Christian message for the retired members of our community. Please contact the church office for more details.

Other regular events

SMARTEES



Smartees : A toddler group for pre-school children and their parents/carers. Every Wednesday during term time 10am-11.30am at St. Mark's Church Centre.

Snacks, toys, craft and singing. £1 donation per family (if possible)

Relax : At a loose end on a Friday evening? Aged between 11 and 16 years? Why not come along to Relax? A youth social for school years 7 to 11. Relax runs in St. Mark's Church Centre on alternate Fridays 7.30pm in term time.

St. Mark's Craft Group. We meet on the 1st Tuesday of every month 8pm until 10pm in the Church Centre. Always something crafty for you to have a go at, or bring whatever you are currently making and we can craft and chat over tea, coffee and biscuits.

Coffee Morning. 10am-12pm in the Church foyer on the 1st Thursday of every month except August. We would love to see you and your friends for coffee, tea, cakes and biscuits. Everyone welcome, adults and children.

Messy Church. Every 2nd Sunday 4-6pm at Colney Heath School Games, activities, celebration, a meal together. Messy church is for everyone but if you are a child you must bring an adult along!

The Gathering. Every 2nd Tuesday 2pm in Church. Our monthly congregation for the older members of the community. Come and join us in a café style setting with a chance to discuss, sing and pray together followed by refreshments.

COLNEY HEATH TAEKWON-DO

A new (very young) Black Belt at the Colney Heath Taekwon-Do School

Deacon Osborn of Richardson Place, Colney Heath has recently been awarded his 1st Degree Black Belt by the International Taekwon-Do Federation (ITF) at just 9 years old. Deacon started training in Tae Kwon Do at just 5 years old at the local Tae Kwon Do club in the village hall where he lives in Colney Heath. Since starting he has achieved all 'A' level promotions in every belt grade up to his black belt. He has also competed at various competitions over the years, winning over 20 medals in local competitions through to national events. These include 2 x Impact open champion, 2 x English open champion and UK open silver medallist.

Deacons Father, John, said

As a father I'm am very proud of what Deacon has achieved at such a young age and I have told him that "If you can achieve everything you have at 9 years old, then you can achieve anything you want in life".

Senior Master Kim Anderson 8th Dan (who is one of the most senior instructors in the world) has been teaching Taekwon-Do (TKD) for 40 years at the local club and said he has never awarded a Black Belt to such a young student (11 was the previous youngest and that was more than 30 years ago). Neither has he seen anyone Adult or Junior promoted from White Belt to Black with a A Level at every step of the way. An incredible achievement for anyone and quite remarkable at the age of just 9 years old. *"I do not normally start students at the age of 5, but Deacon proved his potential at his first trial lesson and his attitude has not changed since the day he started. The highly coveted Black Belt is not easy to earn and Deacon proved his worth in passing both the written and practical tests. His result is a true deflection of the amount of effort and hard work that Deacon applies to his TKD and I am extremely proud to award this to Deacon at the age of just 9".*

If you would like to learn Taekwon-Do in a friendly relaxed atmosphere with mixed ability classes then please contact Master Anderson on [07796 997378](tel:07796997378)

All welcome or pop in to
The Colney Heath Village Hall
83 High Street, Colney Heath, Herts AL4 0NS
Wednesdays 7-9pm and Saturdays 10-12am
Contact
Senior Master Kim Anderson (8th Degree ITF)
Kim.anderson3@ntlworld.com
www.facebook.com/Colneyheathtkd



Deacon winning his first medal at the Herts competition in 2015 as a white belt.



Master Anderson presenting Deacon with his Black Belt and Certificate



some of Deacon's Medals as a blue belt in 2017



Deacon with Master Anderson and other senior Black Belts and Instructors at class in Colney Heath



COME AND SEE THE 'NEW' AIRCRAFT MUSEUM!

WHEN the de Havilland Aircraft Museum opens its doors on Sunday February 16th after its winter closure visitors will see for the first time many of its historic aircraft on display in the large new climate-controlled hangar now their permanent undercover home.

It is the centerpiece of the Museum for the 21st Century Project initiated by the museum some five years ago and now nearing completion thanks to the support of National Lottery players.

The project at the Salisbury Hall, London Colney site has cost of nearly £2 million and the new hangar is linked to the Walter Goldsmith Hangar – opened in 1982 by HM the Queen Mother – the Aeroshop and entrance foyer to provide a totally undercover and fully accessible experience where visitors can see restoration work being carried out by teams of volunteers as well as sit in the cockpits of jet fighters and passenger cabins of airliners.

With a collection of more than 20 aircraft all designed and built by the Hatfield-based de Havilland Aircraft Company the museum's aim is to preserve not only the aircraft but also the enormous contribution the company made to aviation during its life from the First World War to amalgamation in the 1960s to form part of British Aerospace.

The opening of the new hangar, to be named the Geoffrey de Havilland Hangar after the founder of the company, also brings to the area an exciting new community facility which can cater for corporate and company events and meetings, local organisations and educational visits.

In the new hangar visitors can walk inside the main cabin of the sole surviving DH106 Comet 1a jet airliner still with its original "square" windows, get up close to a DH98 Vampire jet fighter, and see the only example built of the unique de Havilland-engined Cierva C.24 Autogyro.

The Walter Goldsmith Hangar, named after the museum founder, is now home to the museum's collection of de Havilland DH98 Mosquitos, the all-wood twin-engine multi-role aircraft of the Second World War. The three on display include the 1940-built first prototype W4050, which was both designed and built on the site where the neighbouring Salisbury Hall Tudor mansion was de Havilland's wartime design office.

Two large sections of a Second World War Airspeed Horsa troop carrying glider are also on show there, the company having become part of de Havilland and the prototype being designed and built in another hangar there.

In a separate area four civil airliners continue to be on external display due to their size. These include a DH.106 Dove, DH.104 Heron, BAe146 and HS125, and these will also be open to visitors.

Whilst the aircraft are the stars of the museum there is also a display of a number of propeller and jet engines and air to air rockets designed by de Havilland.

Visitors can take a break and enjoy hot snacks and drinks in the café and browse a large range of aviation-related items in the Aeroshop.

The museum is signposted at Junction 22 of the M25 and has its own car park. For more information visit www.dehavillandmuseum.co.uk

De HAVILLAND AIRCRAFT MUSEUM

All photos by GARRY LAKIN



the sole surviving “square” windows DH Comet 1a jet
airliner moving into the new hangar



prototype DH Mosquito W4050



Cierva .24 Autogyro



replica DH Comet Racer

THE SMALLFORD STATION AND ALBAN WAY HERITAGE SOCIETY

Request for some help - with Welding!

Perhaps a strange start to our report but we're hoping that there's someone out there who can help us?

As reported in the Summer Edition of CH Parish E-News, amongst our exciting project plans is the refurbishment of an old Goods Van Wagon – to create a permanent storage space for our exhibition and a selection of items in our collection - to site this close to Smallford Station and open it to the public.

One of the first tasks we have is to stabilise the structure by replacing the whole of the steel underframe – which will require some welding.

If you're able to help us, or you know someone who can, please email Jeff Lewis at info@smallford.org

Exciting Collaboration with Oaklands College

We had an excellent introductory meeting with several members of the Senior Management Team at Oaklands College about how we might collaborate on our exciting plans to -

- Improve the Environment around Smallford Station
- Refurbish our Railway Goods Van Body – which is already on their Smallford Site

This is being followed up by a series of meetings with various Heads of Departments and I'll be reporting on progress in future issues.

A Dream we have – on hold for the moment!

A significant aspiration is to renovate and restore Smallford Station Ticket Office to create a Local Community Heritage Centre. For various reasons beyond our control, this is currently on hold.

However, perhaps you have some ideas on how this could be used as a wonderful community resource? If so, we'd love to hear from you - via info@smallford.org

Meet us/Chat with us/See Our Exhibition – at 2 great days out!

15th March

Oaklands College Lambing Day/Spring Fair – also see our goods van body in situ.

6th/7th June

St Albans Steam & Country Show @ Oaklands College.

Alban Way Guided Walks

Likely to have 2 in May – please contact us (info@smallford.org) if you'd like to know when the dates have been decided. There's no charge – but a donation is always welcome!

Coming Up Presentations

Bringing the History of Smallford Station & Alban Way to Life

12th February Essendon WI

18th February St Albans U3a

30th April Stevenage U3a

The Varying Fortunes of the Hatfield & St Albans Railway

31st March RCTS Hitchin Branch

We are most grateful to Hertfordshire University Heritage Hub for their continuing support.

Jeff Lewis: Chair: Smallford Station & Alban Way Heritage Society
info@smallford.org

ITEMS AVAILABLE FROM US

We have a number of items that might be of interest to you; we don't sell them – but would appreciate a donation to our funds!

Fridge magnets

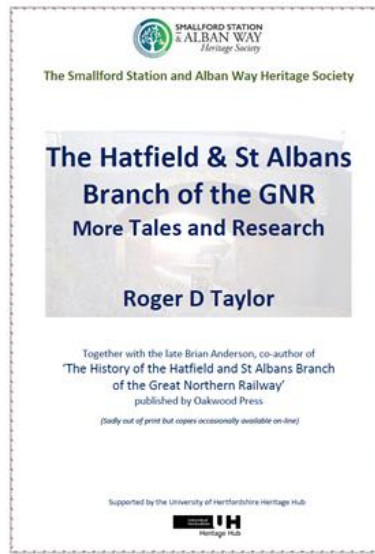


Suggested
£2.50 + £1 p&p

donation

Roger Taylor's 'More Tales'

1. Introduction, Biography
 2. Railway Memories
 3. The Branch Line on Film
 4. Specials on the Branch
 5. After the Line Closure in 1969
 6. Halts, an Incident & Others
- New Research & Corrections

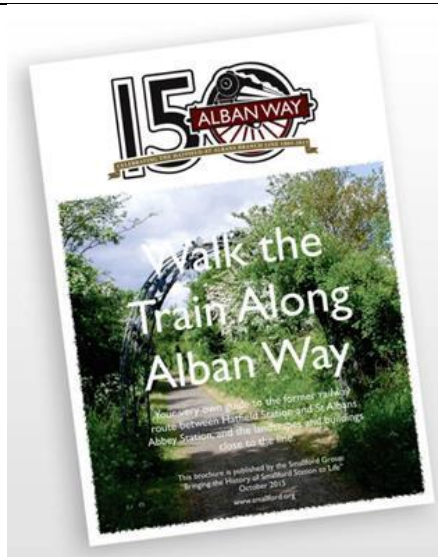


Suggested
£3.00 + £1 p&p

donation

Alban Way Guided Walk

Edited by Mike Neighbour
(St Albans Own East End)



Suggested
£3.00 + £1 p&p

donation

COLNEY HEATH THEATRE CLUB

Colney Heath Theatre Club is a not for profit organisation which has been running trips to the West End for the past thirteen years.

In October we saw a new musical & Juliet – what if Juliet's famous ending was really just her beginning. It was a very enjoyable evening with some of the biggest pop anthems in the last thirty years.



In November we went to see Mary Poppins – the magical story of the world's favourite Nanny. Incredible effects and unforgettable songs. Petula Clark as The Bird Woman and Charlie Stemp as Bert.



The week before Christmas we went to see the pantomime at The London Palladium. This year it was Goldilocks and The Three Bears starring Matt Baker, Julian Clary, Paul O'Grady, Gary Wilmot and Nigel Havers.

We have booked for Pretty Woman in October and hope to book a show very shortly.

We provide a safe, comfortable and convenient way to enjoy an evening in the West End.

If you would like to receive information on the theatre trips please either email colneyheaththeatreclub@yahoo.co.uk or telephone/text 07870 701 118



COLNEY HEATH VILLAGE HALL

The village hall is used by a number of regular hirers, most of whom have used the hall for many years. The Badminton Club, The Cyclists Touring Club, Jujitsu, the Twinning Association, Treasure Tots, Taekwon-Do, the Old Friends, and the WI are all shown in the accounts from 20 years ago. Zumba and Different Dog (dog training) have joined the “regulars” in the Main Hall. The Main Hall and Community Room are also used for “casual hires” – one-off bookings for parties, classes and training, etc. Children’s parties in the Main Hall on Saturday afternoons are particularly popular so booking well in advance is necessary.

In 2017 we reviewed the use of the main hall and community room and noted that we had around 30 casual bookings in the year. At the beginning of 2018, we decided to actively promote the facilities for hire at the hall by creating and continuously developing and refining a website.

In 2018 we had 102 casual bookings of the Main Hall and in the Community Room and this increased again to 220 casual bookings in 2019. The Main Hall now has sessions for casual bookings only on Saturday afternoons and the evenings on Fridays, Saturdays and Sundays. The Community Room is getting quite busy with regular bookings on Tuesdays, Wednesdays and Thursdays, but we have availability for many more. The new kitchen and refurbished Community room, completed in the summer last year, have been admired and appreciated.

The Community Room has increased bookings for family gatherings and celebrations that are too large to be accommodated at home, providing space for all to sit down to eat together, supported by our well equipped kitchen.

Projects planned for the new future include improved low energy lighting, WiFi and audio visual facilities.

The success in getting many more bookings contributes to keeping our hall a vibrant asset for the local community. However, being much busier brings some problems too with hirers not adhering to our instructions regarding parking and access arrangements despite these being very clearly defined in both the hire agreement and user instructions.

We are in the final stages of transferring the village hall to the charity we have set up as a Charitable Incorporated Organisation (CIO) to continue safeguarding and developing the hall for community benefit. The CIO adopts the current best practice standards for governance specified by the Charities Commission, and is intended to attract new trustees to ensure succession.

For more information visit
www.colneyheathvillagehall.com



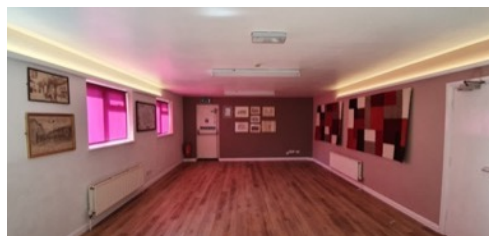
Entrance on High Street



Main Hall with stage



New kitchen for Main Hall and Community Room



Community Room

ZUMBA AND ZUMBA GOLD

What the heck is Zumba®?

Zumba® is a dance exercise class, with easy to follow moves, guaranteed to burn some calories, help keep you moving and make you smile! Did you know the average Zumba® class burns around 400 to 500 calories?? That's three bags of crisps, two glasses of wine, two bars of chocolate.... You can equate it to whatever is your poison, but it's a significant calorie burn!

Zumba® combines Latin and pop dance music with easy to follow moves, grouped in patterns. You don't have to be well co-ordinated, you don't have to be a great dancer, you don't even have to know your left from your right to dance Zumba® because our ethos is the only wrong move you can make is to not move!! It doesn't matter if you are going a different way to everyone else, and it doesn't matter if you want to rock out and do your own moves if you don't like mine – free style solos are always welcome ☺

What's the difference between Zumba® Gold and regular Zumba®?

Gold classes are aimed at anyone who has restricted mobility through injury or a long term condition, or anyone returning to exercise after a long absence. It is a fun and energetic work out just the same as the regular class, but there is no jumping or twisting, and therefore less impact on the joints. Moves are incorporated to increase a full range of motion in your body to make and keep you active.

So why come along?

In short Zumba® is a great way to get fit, stay fit and make friends, while having fun in the process. There are no mirrors in our hall and no one will judge to way you look or what you wear. All you need is comfortable loose fitting clothes and trainers on your feet. It's advisable to bring a bottle for water (there is a kitchen to fill it up) and a towel when the weather is warm to wipe away the sweatiness!

Classes are pay as you go, there is no need to book and you are not tied to a membership in the way you are at a gym.

We meet every Tuesday at the Colney Heath Village Hall.

Gold is at 6pm and is £4.50 per 45 minute class, and Zumba® is at 7pm and is £5 per 45 minute classes.

For information call Ali Chason,
on 07581 396144,
or email at zumbaalista@gmail.com.

See you in class soon! xx



Colney Heath Village Hall
83 High Street, AL4 0NS

Every Tuesday

Zumba Gold 6pm to 6:45pm

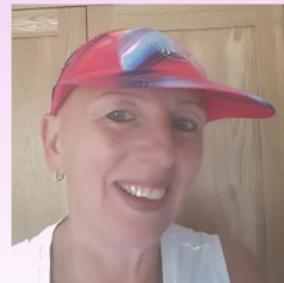
£4.50 per class

Zumba 7pm to 7:45pm

£5 per class

Pay as you go, just turn up

No experience necessary



Contact Ali Chason zumbaalista@gmail.com

COLNEY HEATH WI

Colney Heath Women's Institute had an eclectic mix of meetings for the last three months of the year. We did enjoy hearing about Motorcycle Drag Racing in October and were impressed that a Colney Heath resident lady biker achieved her goal of 201.7mph just a few days later - it must have been that WI magic!

In November we had a workshop led by one of our clever 'crafty' members. We were all able to have a go at making pillow boxes and flowers - see photo attached and be impressed!

The Drama group rounded off our year with amusing sketches and songs and, being as it was December, we all joined in with some carol singing after a bring-and-share buffet.

Our January meeting included a very informative talk by Derrick Sweeney, the local Watch Liaison Officer from Hertfordshire Police.

Also in January, as part of our informal social programme, a number of our members and a guest enjoyed an excellent selection of cheeses and wine in a members home.

As for 2020, we are looking forward to hearing about Japan- land of contrasts, in February. Back by popular demand will be the singing group "Just a Capella" who will be entertaining us at our birthday meeting in March. We will be celebrating the fact that there has been a Women's Institute in Colney Heath for 67 years. Long may it continue!

We are open to women of all ages and welcome visitors to our monthly meeting with your first visit free. We meet in the Colney Heath Village Hall every second Thursday of the month (except August) from 7.30pm to 10pm. Do come along!

For further information find us on www.facebook.com/colneyheathwi or email colneyheathwi@gmail.com or call Joanna on 07956 502369.



"Lady biker" on Facebook



Our drama Group performing the "Twelve Days of Catmas" as pictured on our Facebook page

COLNEY HEATH TWINNING ASSOCIATION (CBTA)

The CBTA is a local organisation providing opportunities to meet and socialise for the community. Membership is not required to enjoy our social events which are not priced to be fund raisers.

Since the last newsletter we have held two events : Cocktails and Mocktails and the annual Christmas dinner dance.

Most events are open to people who are not members of the Twinning association and are appreciated for their quality and value.

If you are interested in our upcoming events please contact our Secretary Lesley Lewis, 01727 822086 or lewislesley@hotmail.com.



On Saturday 8th December our annual dinner dance took place, this year for a change in the Colney Heath Village Hall.

After enjoying a selection of canapes with a glass of prosecco or nosecco for the drivers, we had a very successful buffet including gammon and fresh salmon, and a variety of side dishes followed by puddings and cheese.

The evening then turned to dancing with music provided by our DJ friends.

All agreed great value for the £18 a head ticket.

Pencil in 5th December 2020 in your diary and look out for more details in the autumn issue of this newsletter.

Up coming events

Saturday 25 January 2020 2.15pm

CBTA Jumble Sale with refreshments provided by the Colney Heath WI, Colney Heath Village Hall

Saturday 21 March 2020

Quiz night, Colney Heath Village Hall

22-25 May 2020

The Official visit by members to Boissy-sous-St Yon

On the 19th October (maybe attracted by the £7 a head ticket) the Cocktail and Mocktails evening was well attended by 24 people (members and guests) in the newly refurbished Community room of the Village Hall.

A variety of tasty snacks and recipes for Cocktails and Mocktails - with a wide variety of drinks - were set out for all to sample.

Interestingly, as the evening progressed a number of new cocktails were invented but sadly no records of these have survived



IRIS' ART GROUP

We are a small friendly group of self-led artists of mixed ability who help each other. We have been running for almost 2 years. Our membership has grown to 12 enthusiastic amateurs. Not all turn up to every session so we can accept new members who are welcome.

If you haven't painted or drawn since school don't worry, most of us hadn't.

Most of our sessions are led by a member of the group who will share methods and ideas - you can either join in or do your own thing. We also share experience on what materials and equipment to use, where to get good deals, exhibitions etc.

We mostly use drawing and watercolours but also mixed media and acrylics.

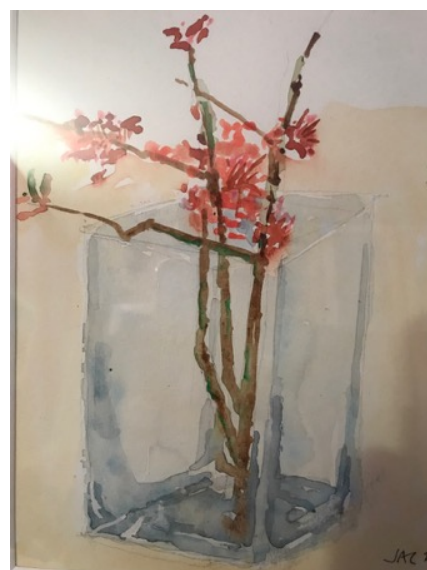
Over the last 3 months our sessions have practised techniques – drawing, light and shade, and laying a wash. Each member is free to choose their own subject to apply the technique using a reference image of their own choice or to use reference pictures brought by the session leader.

We meet on the first Wednesday morning in the month, from 10 to midday 12, in the Colney Heath Village Hall Community room, accessed via side door to the left of the main building.

Membership is free. You only pay for the sessions you attend.

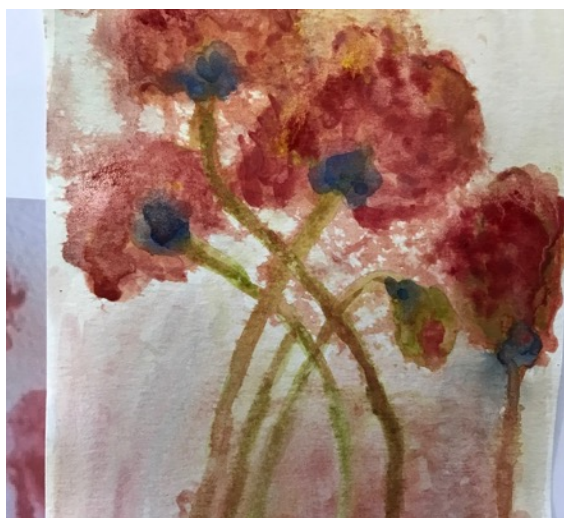
The cost is £3 per session and there is no need to commit to attend or pay in advance. This pays for the hire of the room, for tea or coffee and biscuits, and to contribute a small amount to funds which will be used for the members' benefit. The group can decide, for example, to invite a guest artist to demonstrate from time to time.

If you are interested in coming along to see if you would like to join, please contact Iris Green on 07809 098 629



THE U3A PAINTING GROUP

The U3A painting group meets on the third Wednesday of each month in the Community room at the Colney Heath Village Hall. January's session was "wet-on-wet" loose technique to paint flowers.



A DIFFERENT DOG

A Different Dog offers dog and puppy classes training at Colney Heath Village Hall at various times on Sunday afternoons.

Whether you have a new puppy or you are looking to brush up on some skills with your teenage or adult dog, we have something to offer you.

Regular 'life skills' courses (5 weeks) are available for two age groups: puppies (for pups aged under 20 weeks of age at the start of the course) and teens/ adults (must have attended puppy classes or a trial class first).

We also have occasional focussed classes including a three week indoor and outdoor recall masterclass, genius classes (for those who really want a challenge!) and tricks classes.

We pride ourselves on being well-qualified, friendly, knowledgeable, ethical and effective.

To find out more information, read our reviews, check availability and book a place for your dog, please visit the website <https://www.adifferentdog.co.uk/>.



Pedro with Gretta Ford

CHILD MATTERS

First Aid Courses at Colney Village Hall

Do you work with young children and require a 3 year paediatric first aid qualification/certificate as part of your role?

Claire Street and her team at Child Matters specialise in delivering OFSTED and EYFS approved educational and interactive paediatric first aid courses for childcare professionals, nannies/au pairs, carers and schools at Colney Village Hall. Covering all aspects of baby/child first aid including practical CPR training, Claire is a registered children's nurse with over 20 years experience bringing hands on personal expertise and knowledge to the training.

Alongside the paediatric qualification Claire is also running Emergency First aid in the Workplace for anyone who requires 'adult' first aid knowledge and skills, whether working in catering or office based.

Child Matters run the following 4 types of classes/certificates at Colney. If you're unsure which course you need just give Claire a ring or email her.

- Paediatric 12 Hour Infant/Child First Aid Level 3 Course – 6 hours classroom combined with 6 hours online learning – Cost £65 for classroom & £19.95+VAT online.
- Emergency Paediatric First Aid Level 3 - 6hrs in classroom – Cost £70
- Paediatric First Aid for Nannies & Au Pairs - 6hrs in classroom – Cost £70
- Emergency First Aid in the Workplace – 6hrs in classroom – Cost £70

The dates for all these 4 courses are as follows at Colney Village Hall, St Albans and are listed and can be booked on Claire's website or by contacting her directly.

- 18th January 2020 – 9am-4pm
- 29th February 2020 – 9am – 4pm
- 25th April 2020 – 9am – 4pm
- 13th June 2020 – 9am – 4pm
- 24th July 2020 – 9am -4pm

If you're a school and would like in-house group training for your staff and/or pupils you can contact Claire for a bespoke quote.

How to book a course or enquire

Web: www.child-matters.co.uk

Email: contact@childmatters.info

Facebook: childmattersUK

Phone: 07788720612

Hyperlink to all individual classes (listed on Child Matters website) for ease of booking

- [Emergency First Aid at Work Level 3 \(VTQ\) - EFAW \(18 Jan 2020 - St Albans, Hertfordshire\)](#)
- [Paediatric \(Blended DAY 2\) 12 Hour Infant / Child First Aid Level 3 \(VTQ\) - PFA \(18 Jan 2020 - St Albans, Hertfordshire\)](#)
- [Emergency Paediatric First Aid level 3 \(VTQ\) - EPFA \(18 Jan 2020 - St Albans, Hertfordshire\)](#)
- [Paediatric First Aid for Nannies and Au Pairs \(18 Jan 2020 - St Albans, Hertfordshire\)](#)
- [Emergency First Aid at Work Level 3 \(VTQ\) - EFAW \(29 Feb 2020 - St Albans, Hertfordshire\)](#)
- [Paediatric \(Blended DAY 2\) 12 Hour Infant / Child First Aid Level 3 \(VTQ\) - PFA \(29 Feb 2020 - St Albans, Hertfordshire\)](#)
- [Emergency Paediatric First Aid level 3 \(VTQ\) - EPFA \(29 Feb 2020 - St Albans, Hertfordshire\)](#)
- [Paediatric First Aid for Nannies and Au Pairs \(29 Feb 2020 - St Albans, Hertfordshire\)](#)
- [Emergency First Aid at Work Level 3 \(VTQ\) - EFAW \(25 Apr 2020 - St Albans, Hertfordshire\)](#)
- [Paediatric \(Blended DAY 2\) 12 Hour Infant / Child First Aid Level 3 \(VTQ\) - PFA \(25 Apr 2020 - St Albans, Hertfordshire\)](#)
- [Emergency Paediatric First Aid level 3 \(VTQ\) - EPFA \(25 Apr 2020 - St Albans, Hertfordshire\)](#)
- [Paediatric First Aid for Nannies and Au Pairs \(25 Apr 2020 - St Albans, Hertfordshire\)](#)
- [Emergency First Aid at Work Level 3 \(VTQ\) - EFAW \(13 Jun 2020 - St Albans, Hertfordshire\)](#)
- [Paediatric \(Blended DAY 2\) 12 Hour Infant / Child First Aid Level 3 \(VTQ\) - PFA \(13 Jun 2020 - St Albans, Hertfordshire\)](#)
- [Emergency Paediatric First Aid level 3 \(VTQ\) - EPFA \(13 Jun 2020 - St Albans, Hertfordshire\)](#)
- [Paediatric First Aid for Nannies and Au Pairs \(13 Jun 2020 - St Albans, Hertfordshire\)](#)
- [Paediatric First Aid for Nannies and Au Pairs \(24 Jul 2020 - St Albans, Hertfordshire\)](#)
- [Emergency First Aid at Work Level 3 \(VTQ\) - EFAW \(24 Jul 2020 - St Albans, Hertfordshire\)](#)
- [Paediatric \(Blended DAY 2\) 12 Hour Infant / Child First Aid Level 3 \(VTQ\) - PFA \(24 Jul 2020 - St Albans, Hertfordshire\)](#)
- [Emergency Paediatric First Aid level 3 \(VTQ\) - EPFA \(24 Jul 2020 - St Albans, Hertfordshire\)](#)

Colney Heath News

Colney Heath Post Office and Store

Off licence and Convenience Store

POST OFFICE HOURS

Monday to Friday: 9.00am to 5.30pm

*Saturday: 9.00am to 2.00pm, Sunday: **Closed***

Postal Services, Free cash withdrawals*, One 4 all gift cards

Access your high street bank accounts,

Pay your bills, electric, gas, phone top up

SHOP HOURS

Monday to Saturday: 7.00am to 8pm

Sunday: 8.00am to 3.00pm

News Papers/Magazines, Tobacco, Grocery,

Confectionary, Cold/Hot Drinks, Sandwiches,

Milk/Bread, Snacks, Ice Cream, Frozen Food and MORE...

Card payment accepted (No minimum charges for card payments)

Find us on Google: 13 High Street, Colney Heath, AL4 0NS

Phone: 01727828144 Email: colneyheathstore@yahoo.com

** R.A*

CHOC “O” BAKE

Georgina and Charlotte presented their “Chocolate Balls” in the Community Room at the Twinning Association’s annual Jumble sale at the Colney Heath Village Hall on 25th January.

Crafted by them locally these beautiful and delicious treats are great for parties and look lovely on a table as centre piece and are for both children and adults.

Prices as follows :

£15.00 for 20

£20.00 for 30

£30.00 for 40

£40.00 for 50

Contact

07311 441 069

chocobake@outlook.com

