

# PARISH E-NEWS



News and updates from  
organisations in the Colney Heath  
Parish community including

Colney Heath village, Highfield,  
Hill End, Oaklands, Roestock,  
Smallford, Sleafshyde, and  
Tyttenhanger

To join the circulation list – its free – email [jackclemow@gmail.com](mailto:jackclemow@gmail.com)



## ISSUE 6 : Summer 2020

painting by Barbara Budd

## WELCOME

In our "Parish E-News" you will see news from, and information about, a number of sources received for inclusion in this issue.

Clicking this link <https://www.colneyheathvillagehall.com/parish-e-news.html> will take you to the website page including this newsletter and previous issues.

Please share this newsletter and to print pages for folk who don't use the internet or e-mail..

- if you have a story, would like to promote an organisation, an event or a cause, or to advertise a local service or business – there is no charge for inclusion in this digital format
- if you spot any errors or have comments

Please e-mail [jackclemow@gmail.com](mailto:jackclemow@gmail.com) (Editor, Trustee of CH Village Hall)

### INDEX

|  | page |
|--|------|
| Editorial  | 3    |
| VE75   | 4    |
| St Mark's Church                                 | 5    |
| Parish Council matters                           | 7    |
| Around and about                                 | 10   |
| British Sign language                            | 11   |
| Colney Heath Village Hall                        | 12   |
| Colney Heath WI                                  | 13   |
| Twinning Association (CBTA)                      | 14   |
| Smallford Residents Association                  | 15   |
| Smallford Station and Alban Way Heritage Society | 17   |
| Colney Heath Parish History Society              | 19   |
| Iris' Art Group                                  | 20   |
| Zumba  | 21   |

## EDITORIAL

The “de-confinement” is slowly progressing but it’s still too early to know how close “normality” - as we knew it - may return, or whether a very different “new normal” will emerge and what this might look like. Your view will depend largely, and vary widely, according to age and circumstances. Contrast a young person leaving full-time education with a “senior citizen”, or a nurse on the NHS frontline with someone who is working from home. Contrast the comfortable retired with those unemployed or facing unemployment. But all share concern about the future and the wish for a sense of certainty. The stream of “Corona-humour” videos and pictures has dried up. Being a “world leader” in the death toll is not a good position for our country to be in.

Will the virus be worse this winter? Research by Kings College London suggests it may be. Read about their work here <https://covid.joinzoe.com/post/weather-covid>. Unemployment is rising, how bad will it be when the furlough cushion deflates? If the spread of the virus was like a “lightning strike”, the consequent “economic thunderstorm” (or maybe a tsunami?) has yet to fully break. It seems crime is increasing. This is a stressful time for everyone – we cannot flee, and we cannot fight. But we can support each other with help and friendship.

The Colney Heath Community Support Group was initially busy in the first month of lockdown answering calls for help. These faded during months 2 and 3 of the lockdown. Now the calls have dwindled to a trickle, but this group remains mobilized and ready to help. Our community rallied - family members, neighbours, friends and community organisations stepping in with practical and moral support.

In our community, the lockdown stopped some organisations in their tracks - the Colney Heath village hall has been empty for four months; some groups have not met. Others have adapted and continued. St Mark’s services went digital. Iris’ Art Group has met weekly on WhatsApp, Ali runs Zumba on Zoom (“Zoomba”?) and Zoom has been adopted for some organisations’ committee meetings, and by the Parish Council for their meetings.

Street WhatsApp groups were formed by residents. The Post Office & village shop has served the village well, Manish and Jayshree working hard to stay open. The Colney Heath Village Facebook has been very active with news, and many offers resulting from the extended “Spring clean”. Many streets enjoyed the weekly “clap for carers” on Thursdays. And for the 75<sup>th</sup> anniversary of VE Day on 8<sup>th</sup> May there were street parties, with social distancing observed.

While the future is uncertain, we gain comfort from the strength of our community and the social continuity – this will carry us through the coming months and years.

The village halls in Colney Heath and Tyttenhanger have now opened and some activities are returning. Services in St Mark’s Church will start again in August. The Crooked Billet and the Plough pubs are open at last. The Parish Council have re-opened the playground in Roestock Park. Families can get together again, and friends can visit. As Her Majesty the Queen reassured us in her address on 6<sup>th</sup> April “we will meet again”.

Some lockdown changes may become permanent in some form. Working from home for “screenworkers”, with suitable arrangements at home, is forecast to remain. The advantages for both companies and individuals are evident – no time and cost in commuting, less stress, time for family. Preparing and cooking meals from scratch, and baking bread, may not be dropped entirely. Footpaths seem to be well trodden and many more people have been walking about. Membership of a local golf club has increased by 178 people paying ten grand per membership, and bookings for weekday rounds have increased.

Maybe the “new normal” for some will mean a more healthy way of living and will be good for local shops, pubs and other businesses as more people work locally.

But let us remember the threat of the infection for the fragile means continued limited social contact, and the economic consequences for others will have a serious impact on their lives.



## VE Day 75

The celebration of the 75<sup>th</sup> anniversary of victory in Europe on the 8<sup>th</sup> May was a welcome event in what we now know to be in the middle of the lockdown. We did not know that at the time of course but the opportunity for the community to have some fun together was taken up with enthusiasm.

This was an event to practice social distancing while enjoying a drink, music and laughter.

Walking around parts of the village in the early afternoon showed many residents had put out bunting and deck chairs in their front gardens, ready for a chat with passersby.

In Bullens Green four families from the street WhatsApp group had designed and made (separately) the parts of a large VE75 which was erected in the street.

Residents came out to join in the 3pm Nation's Toast to the Heroes of WW II, "TO THOSE WHO GAVE SO MUCH, WE THANK YOU", and then the party kicked off.

We had been asked to "remember the members of the Armed Forces and Merchant Navy from many countries who gave their lives or returned home injured in body and mind, the hard-working women and men who operated the factories, mines, shipyards and farms, and ARP wardens, police officers, doctors, nurses, fireman, local defence volunteers and others who toiled day and night selflessly on the home front during difficult frightening and uncertain times."

Maybe we did remember while we had our drinks, chatted and listened to a collection of the great songs of the era Vera Lynn's (There'll Be Bluebirds Over) The White Cliffs of Dover, There'll Always Be An England, We'll meet again, Boogie Woogie Bugle Boy by the Andrews Sisters and so on.

The party ended very late. There were apparently no complaints about the noise.



## ST MARKS CHURCH



[www.stmarkscolneyheath.co.uk](http://www.stmarkscolneyheath.co.uk)

Tel: 01727 825175

Email: [office@stmarkscolneyheath.co.uk](mailto:office@stmarkscolneyheath.co.uk)

St Mark's Church is delighted to share with you that from **August 2nd** we will be **open for 9am worship**, details below, this service will also be live streamed and available on the church website:-

**[www.stmarkscolneyheath.co.uk](http://www.stmarkscolneyheath.co.uk)**

We have seen a huge amount of interest in our *online* services and these will be continuing every Sunday during August - released at 10am.

Do look ahead to September where services new online *and* live will be available.

Throughout the month of August the church building will be open for private prayer every **Wednesday** from 11-1pm and someone will be there to speak to if you would like a listening ear.

The church has looked different over the last few weeks, like many other places, but we have continued to provide ways to worship and give support to one another. If you would like to explore questions of life and faith do let us know.

Subject to the restrictions and guidance by the government and the Church of England, St. Mark's is now available for funerals and weddings.

**We recognise that for many that this has been a testing time and we continue to offer you *all* the support of prayer and encouragement.**

Every blessing

Rev. Caroline Keightley



# ST MARKS CHURCH

## AUGUST 2020 SERVICES IN THE CHURCH

|             |     |                       |
|-------------|-----|-----------------------|
| Sunday 2nd  | 9am | Morning Worship       |
| Sunday 9th  | 9am | Morning Worship       |
| Sunday 16th | 9am | Morning Worship       |
| Sunday 23rd | 9am | <i>Holy Communion</i> |
| Sunday 30th | 9am | Morning Worship       |

**St. Mark's is very much looking forward to welcoming *everyone* to the return of public worship.**

**Services will look a little different from before:-**

- ◇ **The layout of the seating has been changed to comply with the social distancing measures.**
- ◇ **There will be no sung worship.**
- ◇ **We ask that you sign-in at the door for track and trace purposes.**
- ◇ **That you wash your hands or use the sanitiser supplied.**
- ◇ **It is strongly advised that face coverings are worn in places of worship.**

**This month our services will be held as below and they will also be live-streamed onto our website.**

**The Church is open for Individual Private Prayer every Wednesday from 11am to 1pm with the opportunity to chat and to pray with a member of our team.**

The Bible says in Philippians 4: 6

"Do not be anxious about anything but in every situation, by prayer and petition, with thanksgiving, present your requests to God."

In the strange times we live we can find comfort in prayer. You may choose to pray the following prayer:

Lord, we thank you for all of the many lessons that this time has taught us.  
We thank you for how it has helped us to be more appreciative of one another  
and the many blessings that we have in our lives.  
We pray for ourselves and those who feel anxious and  
we ask that you would gift us with Your peace.  
We pray for those suffering during this season that  
you would comfort them and we pray for the gift  
of joy-filled unexpected blessings and encounters.  
Lead us and our community each day to a place of greater kindness and love.

Amen

# PARISH COUNCIL MATTERS

<https://www.colneyheathparishcouncil.gov.uk/>

The Parish Council has an excellent website with a lot of information. This is well worth looking at regularly, even if you attend Parish Council meetings. With the demise of the Chronicle in 2015 (which was published quarterly and delivered to all households in the Parish), the website is the place to try to find out what the Parish Council is doing - or not as the case may be.

## NOTICE BOARDS

Twelve of the Parish Council's notice boards are being removed and one is to be replaced next to the Post Office and shop in Colney Heath. Two new boards will be put into storage to be erected in Highfield and Hill End wards in the future. The removal was noted with concern on Colney Heath Village Facebook.

The problem is how the Parish Council should communicate with the residents. Notice boards have limited space, documents are quickly outdated, but are visible to all. A website can carry much more information, but excludes people who don't use the internet – predominantly older and disadvantaged folk. Notice boards were also used by local organisations although the Parish Council has said that was illegal. It will be interesting to see what the Council prioritise as important to post on the one noticeboard.

But, look out for the Parish Council's summer newsletter which apparently is imminent.

## MINUTES OF COUNCIL MEETINGS

Minutes of Council meetings are a good source of information. The decision on the notice boards was covered in the Minutes of the Parish Council's meeting in January 2020.

### LEGAL COST BREAKDOWN MARCH 2020

Expenditure quoted is inclusive of fees and disbursements and less VAT. All costs quoted are inclusive from April 2016 unless otherwise stated. Figures are correct and are inclusive of all invoices received up to 27<sup>th</sup> February 2020.

| Opening Date      | Case   | Other Party                                 | Status                            | 2016/17    | 2017/18    | 2018/19    | 2019/20    | Total Exp  |
|-------------------|--|---|-----------------------------------|------------|------------|------------|------------|------------|
| Approx. 2013/2014 | Tytenhanger Green Access                       | Residents 19-21 & 25 Tytenhanger Green      | CLOSED JAN 2020 (agreed Oct 2018) | £12,706.00 | £17,426.20 | £14,052.90 | £6,106.50  | £50,140.10 |
| 17/05/17          | Fredericks Wood Access                         | Landowner of Fredericks Wood and Osier beds | CLOSED DEC 2019                   | £0.00      | £2,327.00  | £3,508.50  | £163.00    | £5,998.50  |
| 21/12/17          | CHPC Office 83 High St                         | Village Hall Council                        | On hold                           | £0.00      | £1,666.00  | £446.00    | £0.00      | £2,112.00  |
| 22/02/18          | Roestock Park & Hut                            | The Scout Association                       | Active                            | £0.00      | £0.00      | £7,070.00  | £2,372.00  | £9,442.00  |
| 13/08/18          | Highfield Park Office Lease                    | Highfield Park Trust                        | CLOSED MAY 2019                   | £0.00      | £0.00      | £1,209.00  | £0.00      | £1,209.00  |
| 30/01/19          | Adverse Possession of the Old Air Raid Shelter | Colney Heath Football Club                  | Active                            | £0.00      | £0.00      | £0.00      | £8,774.50  | £8,774.50  |
|                   |  |   |                                   | £12,706.00 | £21,419.20 | £26,286.40 | £17,419.00 | £77,676.10 |

It is not clear if the community was consulted or whether this was another decision taken "in the best interests of the community". Some minutes are somewhat opaque. Take item 20/21-27 regarding the Neighbourhood Plan Steering Group from the June 2020 Council meeting

"Council noted the papers circulated and Cllr Slaughter raised that she was against this proposal and would like her opinion registered and also her vote registered".

The report referred to is not, as far as I can see, published. The latest document on the Neighbourhood Plan section on the Parish Council's website is dated 2014.

## FREEDOM OF INFORMATION

So just what Kate was voting against is unclear – a Freedom of Information request will be made and the response should appear on the Parish Council's website.

I say *should* because, for example, a response to a Freedom of Information request has been removed. The FOI request was for the Parish Council's expenditure on legal fees. The response now on the website is for a FOI question about this publication. Of course it may be a website glitch but in case you missed it the response is reproduced below.

At least one other response that was previously published of the Freedom of Information section of the Parish Council's website has been removed. It's a good idea to download them if you want to keep a record.



# PARISH COUNCIL MATTERS

## GLOUCESTER PARK

In case you don't know where this is, Gloucester Park is bounded by the rear of houses on Camp Road, Drakes Drive and Hill End Lane. In 2009 the Council bought "Gloucester Fields POS" for £30,000, previously open space for Hill End Hospital probably going back a century.

At the time the Herts Advertiser reported that Cllr Chris Brazier, who sits on both the parish and district council, said the site was never suitable for development and he understood the developers had failed to get access to it. He added: "So the developer has now come back to us and said you can buy the playing field for £30,000. This will stop it being developed because we will retain it as green space which can never be built on."

Local residents recall a letter from the Parish Council stating the Park would be kept as a public open space amenity "in perpetuity" (dictionary definition "the state or quality of lasting forever"). As they say "circumstances alter cases" so "forever" is not as long as one may imagine.

At the Parish Council meeting on 23<sup>rd</sup> July they agreed to see if they could sell this land.

According to what I heard of the discussion,

- the Park is empty, ugly and the upkeep is costly,
- payment of the original purchase cost continues to be made to the public loan board,
- the land has not been used and the ground is too poor for allotments which were tried but did not work
- maybe someone else could do better, possibly developing part of it
- the Park is a liability for the Parish Council – the aim is to "turn liabilities into assets".
- the amount the Council would get from selling it is irrelevant, could be £20,000, £30,000, £50,000.

It would be interesting to know what consultation the Parish Council has done with local residents. Is this a decision made on behalf of the community?

## HORSESHOE FIELD

Also discussed was the Horseshoe Field, next to Nottcutts. The Parish Council purchased this land from Punch Taverns for £5,000. This land lies empty and continues apparently to be a liability although exactly what was not spelled out. Something about fences was alluded to.

Interest has been expressed to buy it from three parties for "horses" and one for "growing fruit". Concerns were expressed that these interests may be a backdoor to another "travellers" unauthorized encampment.

The Smallford Residents Association have expressed interest in this site and would like to work with the Parish Council to create a community garden.

I think I heard a Councillor say that while the purchase price was £5,000 the acquisition process was complicated and cost £50,000 in legal fees. So the Parish Council may want a bit more than five grand for it, although leasing it was mentioned as an option.

## ROESTOCK PARK HUT (FORMERLY THE SCOUT HUT)

The Parish Council have stated that "Due to the building's age it requires some attention in terms of safety requirements and improvements".

At the Parish Council meeting on 23<sup>rd</sup> July held on Zoom I think I heard the survey and report commissioned by the Parish Council indicated the cost of what needs to be done is estimated at £100,000. This report will make interesting reading.

It is hard to imagine a business case could be made for this level of expenditure so the future of the Hut looks very uncertain.



# PARISH COUNCIL MATTERS

## BUS SHELTERS

The Parish Council's asset register identifies 20 bus shelters. 9 "wooden bus shelters" and 5 "bus shelters", are all valued at £4,500, and 6 more "bus shelters" are valued at £5,000 each. The wooden bus shelters are typical of traditional rural type. Now rather old the Parish Council note they are rotten and unsafe. Their construction is not robust and the flimsy timber and glass is easily vandalised. The design provides good shelter but also a place for people to "do stuff" without being easily seen. They are beyond repair and refurbishment. I would agree with the Parish Council that they need to be replaced.

So the Parish Council has a programme to deal with the bus shelters across the Parish.

At the December 2019 Parish Council meeting it was agreed to replace 2 bus shelters, one on Hatfield Road by Oaklands College and one in Hill End Lane, in the modern style for a combined cost of £6,500. One is a 3 bay and one a 2 bay so its not clear what each cost. It was noted then that "a future debate on the maintenance and replacement programme for the remaining 15 bus shelters would be required to take place at some future date. This would require a strategic approach to looking at the use and location of each bus shelter".

At the Parish Council meeting on 25<sup>th</sup> July 2020 it was noted that the Parish Council does not have strategy across the Parish for the style of replacing the bus shelters. The issue of the day was the problem with the wooden bus shelter in Tollgate road, Colney Heath, with broken glass.

Some people in the rural parts of the Parish see these little buildings as part of the character of the rural settlements, and one of the Councillors resident in Colney Heath village seems to agree. Other Parish Councillors may agree with one who lives in Highfield who seems to think these have no place in the modern world. This reflects perhaps the difference between the "town versus country" view or the "new urbanite" versus the "old villager". I can't be sure but I think there is a perception that a new wooden bus shelter would be prohibitively expensive.

It was noted that villagers had not commented on bus shelters and few attended the surgery on Zoom run by Cllr Slaughter in June 2020. Cllr Slaughter said she did not know how to ask a question of the public. The Clerk said residents could be surveyed but this would cost money.

It was agreed to replace the Tollgate Road bus shelter with a modern style and "see if there are objections".

This is an "interesting" approach to democracy – which could be viewed as a sort of "stuff it and see if they choke" approach but maybe the Parish Council perceives the residents to be apathetic and disinterested. Few attend Council meetings.

The "Good Councillor Guide" says  
The job of your council is to represent the interests of the whole community....As a councillor, you have a responsibility to be well informed, especially about diverse local views. You cannot assume that you represent the interests of all your electors without consulting them."

With a quick search on the internet and a phone call I found a new wooden bus shelter specifically designed for, and bought by, rural Parish Councils. It meets all the DDA and Public Realm legislation and requirements. Attractive in seasoned quality wood, durable, and low maintenance, with no glass or metal, it's designed to be in keeping in a countryside location. The ball park supply and installation cost given was around £4,250. Perhaps not quite so much more than may be imagined. There may be other suppliers who make something similar for less.



Bye, bye old friend.  
Anyone need some fire wood?

## AROUND AND ABOUT

### THE SHOP AND POST OFFICE

From Monday 27<sup>th</sup> July opening hours have been extended as follows :

|                  | SHOP hours       | POST OFFICE hours |
|------------------|------------------|-------------------|
| Monday to Friday | 8.30am to 7.30pm | 9am to 5.30pm     |
| Saturday         | 8.30am to 7.30pm | 9am to 2pm        |
| Sunday           | 8.30am to 3pm    | Closed            |

Manish and Jayshree Shah have received many compliments on Colney Heath Village Facebook for their hard work and community efforts during the lockdown. The value of the shop and post office is clear, and we should support it so this service continues in the village.

### COLNEY HEATH VILLAGE FACEBOOK

The Colney Heath Village on the Facebook platform has an active membership with many postings and comments. During lockdown residents have had a big spring clean and free to pick up items have been posted.

A number of posts are promotions for products and services (some more relevant and useful than others) which led to someone wondering if this had become a shop. There are reports about littering, other anti-social behaviour and more serious crime. There is lively and sometimes confused debate on village issues. And many photos of the beauty in and around the village.

### De HAVILLAND AIRCRAFT MUSEUM

<https://www.dehavillandmuseum.co.uk/>

The museum has re-opened for visitors, Tuesday to Sunday including Bank holidays.

The Museum at Salisbury Hall is in the Hertfordshire country side near to the M25 with lovely wide open spaces, free parking, picnic tables, huge hangars with most of the collection under cover protecting visitors and the artefacts from the weather.

"We are able to welcome our visitors while adhering to the Governments current social distancing guidelines. This means that, for the moment, our aircraft and cockpits cannot be entered but you can get close up to all the exhibits.

Together with our E Admission Ticketing system and a new one way flow to explore all the areas of the museum, we are confident that we will not need to restrict visitor numbers. Your E Ticket enables you to choose your date and makes entrance to the museum contactless and easy".

### CRIME

Judging from the number of messages from OWL, some comments on the Colney Heath Village Facebook, and the report on Highfield Park at the Parish Council meeting on 23<sup>rd</sup> July, it seems crime and anti-social behaviour has increased recently. Some of the anti-social behavior can be traced to the fact that many people have not been working, and walking locally, so littering and leaving dog-do's around. And lockdown has been frustrating especially for younger people who are not seeing many of their age group falling ill. Littering and vandalism has a real impact on the local environment and damages the self esteem of the community.

If you are not on OWL you should join to find out about the latest scams and what types of crime are being committed in the area.

**BSL COURSE**

*Signature*

## **BRITISH SIGN LANGUAGE COURSES**

**September 2020 —  
July 2021**

- . Deaf Awareness and communication tactics Course
- . BSL level 1
- . BSL Level 1 young people
- . BSL level 2
- . BSL level 3
- . BSL Level 4
- . BSL Level 6

For more information-  
[bsl@heathlands.herts.sch.uk](mailto:bsl@heathlands.herts.sch.uk)  
<https://heathlands.herts.sch.uk/bsl-courses/>

# COLNEY HEATH VILLAGE HALL

[www.colneyheathvillagehall.com](http://www.colneyheathvillagehall.com)



The Hall fell silent and rested for three and half months. At the end of June Treasure Tots pre-school returned for three weeks, focusing on children who would be moving up to the JMI school.

During the lockdown period the hall was carefully maintained to see that it remained clean and safe, in particular to prevent standing water becoming infected with legionella. We also used the opportunity for a major “spring clean”. Our insurers and Community Development Action Herts provided useful guidance during this period.

Re-opening the hall as a “Covid-19 Secure Facility” required some time-consuming study of government regulations and guidance. CDA Herts and Action for Rural Communities England (ACRE) were very helpful in guiding us through the sometimes confusing government publications. Tim Hayward-Smith from CDA has also arranged several Zoom sessions with groups of village halls in Hertfordshire to share experiences, tips and answer questions.

We have tried to make the environment as familiar as possible while meeting the safety requirements. We have prepared clear and simple instructions for people using the hall to observe. These are not very onerous.

At present the number of people who can use the Main Hall is limited to 33, and the Community Room is limited to 8 people. We expect, and hope, this will change in due course.

Our “regulars” are gradually returning and have booked dates for their events and meetings. Badminton on Mondays, Taikwon Do on Wednesdays and Saturdays, Different Dog on Sundays. Iris’ Art Group has started again and the WI will meet again from September. The healthcare related training sessions that the hall is frequently booked for have started again.

Visit our enquire page which has our bookings calendar and all the other information needed. <https://www.colneyheathvillagehall.com/enquire>

Enquiries have picked up so we expect the hall again fulfil its function – an attractive meeting place managed by a not-for-profit charity on behalf of the community.



## **COLNEY HEATH WI**

[www.facebook.com/colneyheathwi](https://www.facebook.com/colneyheathwi) e-mail [colneyheathwi@gmail.com](mailto:colneyheathwi@gmail.com) or call Joanna on 07956 502369.

Our last WI meeting was on March 12<sup>th</sup> when we celebrated our 66<sup>th</sup> birthday and enjoyed entertainment from Just Capella just before the lockdown sadly it will be a while before we can all sing again!

Our members were contacted to check if they had help if needed and to offer the village Community Support Group contacts for future needs as necessary. The speakers booked for meetings in April through to July were canceled. Activities were suspended until the rules allow closer contact. However, Book Club continued via Zoom and the book for discussion next week is "Into the Wilderness" by Sara Donati.

The committee embraced zoom and the new normal to continue committee with some meetings in a member's garden socially distances of course. There we laid plans for a Pimms and Puddings Extravaganza to take place in a member's garden to allow social distancing and observance of the current rules.

A full meeting is planned for September now that the Village Hall is open as a "Covid-19 Secure Facility" with an enhanced cleaning regime. Ventilation and social distancing will be observed – lucky that we have a microphone system!

Some members are still shielding so are unable to join in person but, technology willing, we will keep in touch.

# COLNEY HEATH TWINNING ASSOCIATION

Contact [lesleylewis@hotmail.co.uk](mailto:lesleylewis@hotmail.co.uk)

The CBTA is a local organisation providing opportunities to meet and socialise for the community. Membership is not required to enjoy our social events, which are not priced to be fund raisers.

Since the last newsletter we have not managed to hold any physical events, but the committee have continued meeting up regularly, where the business has focussed on the wellbeing of the Association members, with whom we have been in contact on a regular basis. In addition to this, we have held the monthly 100 club draw.

A "wine o'clock Zoom event was also held enabling members to catch up on one anothers' news over a glass of wine.

As mentioned in the last E-News publication, sadly we had to cancel the visit to Boissy due to take place in May this year.

We did, however, ask everyone to dress up in summer hats for a group Zoom session which we recorded a few days before the date we should have been in France. This was then sent the recording to ABAI, our French counterpart organisation for circulation to the members in France.

Our message of friendship and disappointment at not being able to travel was well received, and are very happy to announce that we have been invited back to Boissy next May.

## Upcoming Events

With the gradual relaxing of the restrictions, we are planning to hold our annual Boules competition on 6<sup>th</sup> September. However, rather than the traditional Boules and BBQ, it will be a Social distance Boules and BYO Picnic!

This is normally held at the Scout Hut in Roestock Park but, due to uncertainty over its availability this year, we may to find an alternative venue.

Sue and John Rowland in nearly matching hats looking very summery



Pam and Peter Fox, the latter wisely not trying to compete with Pam's creation.



The Bailies - Mary adopted a summery hat but Bob strangely decided to wear a tam o' shanter



Sue Blunt followed the hat guidance while John Clemow sported his new hairdo pending the opening of the barber shop

# SMALLFORD RESIDENTS ASSOCIATION (SRA)

Contact [sra@smallford.org](mailto:sra@smallford.org)

## HORSESHOE FIELD

The field by Smallford Roundabout, next to Notcutts Garden Centre, is now known locally as Horseshoe Field. It is owned by Colney Heath Parish Council and, over many years, your Residents' Association has had extended discussions with them about plans to create a Local Community Garden.

For various reasons, these plans have been on hold for some time. However, this was discussed at the recent Parish Council meeting held via Zoom on 23<sup>rd</sup> July, attended by Smallford Residents Association Committee members. The Agenda Item was as follows:

### 20/21-41 PARISH COUNCIL FUTURE LAND MANAGEMENT

To discuss a report on the proposal to sell the land known locally as Gloucester Park

**To discuss the future and potential lease arrangement or development of the land known locally as Three Horseshoe field**

Apart from the long-term interest from Smallford Residents in its desire to work with the Parish Council to make this small field a space that can be enjoyed by all, we were told that there were 4 other parties interested in buying or leasing the field.

While the Parish Council are establishing the cost of purchase including legal costs, our preferred outcome would be to lease the land and then maintain it, so the Parish Council would still retain the asset without ongoing maintenance costs. The last thing we want is for the land to be leased or sold to those third parties who have no interest in our community.

## LOCAL ROADWORKS

We have received the following update from our HCC Councillor, John Hale -

*In the next couple of weeks there will be -*

- 1. Further repairs to the footway along the Hatfield Road – started this week*
- 2. Surface dressing of the road from the roundabout to Colney Heath Lane.*

*Once that work is done he will be pressing for Ringway to sort out the drain-works on Smallford Roundabout.*

## SMALLFORD WORKS, SLEAPSHYDE LANE

There has been an application, from developers Stackbourne Ltd, to demolish the existing structures and light engineering buildings in Smallford Works and replace them with up to 100 housing units.

The proposal was discussed earlier at the Colney Heath Parish Council meeting where it was unanimously rejected. The Parish Council is a consultee, not the decision maker which is St Albans District Council. Councillor Chris Brazier sits on both the Parish and District councils.

The proposal would entail loss of employment for around 100 people and create even more traffic on Station Road/Smallford Lane from the additional 150 to 200 cars of the families who would be living there. This would be particularly relevant at peak period times.

Apart from the fact that the land is seriously contaminated from previously uncontrolled usage, the outline plan for the site has been widely criticised by all public bodies - including the NHS, Police and Fire Services - for the potential impact on local doctors and clinic facilities, lack of good access for emergency vehicles and potential for increased criminal activity.

The proposal was again roundly rejected by the District Council but the developers have indicated that they may appeal to the Planning Inspectorate to have the decision overturned.

## A Message from OWL/Neighbourhood Watch: Crime Prevention Advice - Protecting Your Home

*As more and more of us are likely to be leaving our homes unoccupied (as people return to work / going out etc), it is important to remember to ensure all external doors are double locked. Our advice is also to check and lock side gates which give access to rear gardens, with wheelie bins secured away from side entrances. For further advice on home security, please click on the following link: <https://www.herts.police.uk/Information-and-services/Advice/Crime-prevention/Protect-your-home>*

*If you need to reply regarding this message, you can email [christopher.stokes2@herts.pnn.police.uk](mailto:christopher.stokes2@herts.pnn.police.uk), or telephone 01707 354192.*

# SMALLFORD RESIDENTS ASSOCIATION (SRA)

## HATFIELD AERODROME/ELLENBROOK COUNTRY PARK: THREAT OF A NEW QUARRY

For the past four years we have been threatened with a new quarry on the old Hatfield Aerodrome to the east of Oaklands Lane. Herts County Council seems intent on going ahead with this proposal in spite of serious concerns expressed by St Albans District Council, Hatfield Town Council and Welwyn and Hatfield Borough Council.

There is a plume of Bromate contamination, Bromate being a known carcinogen, across the north-eastern end of the aerodrome coming from an old chemical works site in Sandridge which ceased production in 1986. The contamination, however, still persists and if the plume is disturbed could cause further drinking water boreholes to be closed off, requiring local drinking water supplies to be piped in from elsewhere.

We have been fighting this threat since the project was first publicised with meetings at Parish, Town, District and County levels, working in conjunction with Ellenbrook Area Residents Association who will, likewise, be seriously affected.

This proposal is due to be discussed by Herts County Council at their next Development Control Committee meeting on 24th September and we will again be presenting our objections.

Together with Ellenbrook we are pleased to be supported by our County Councillors John Hale, Margaret Eames-Peterson and Paul Zukowskyj.

The old aerodrome was supposed to be turned into a Country Park in 2000 when Planning Permission was granted for the building of the Technical Park in Hatfield and other developments. This had never come to fruition but the open area has been a godsend to a wide range of people, especially during this recent lockdown, using it for walking, running, jogging and cycling.

If we were to lose it, it would be a major loss to our community – let alone the effect of several hundred lorry movements each day up-and-down Hatfield Road for the next 30 years!

We really do need your support in this. You can email or write objecting to the proposal to -  
Mr. Chay Dempster,  
Spatial and Land Use Planning Unit  
CHN216  
County Hall  
Hertford, Herts SG13 8DN  
Email: [spatialplanning@hertsccl.gov.uk](mailto:spatialplanning@hertsccl.gov.uk)

If you do write to Chay, we'd appreciate a copy – via [info@smallford.org](mailto:info@smallford.org)





## SMALLFORD STATION AND ALBAN WAY HERITAGE SOCIETY

[info@smallford.org](mailto:info@smallford.org)



**Our Committee** continues to 'meet' online via Zoom.

### HERITAGE OPEN DAY: SUNDAY 13<sup>TH</sup> SEPTEMBER 2020

We plan to be involved in this Year's National Heritage Open Day - the general go-ahead has been given by national organisers - The National Trust.

You'll have the opportunity to see our exhibition (illustrating the history) together with a scale model of the station as it was 60 years ago, plus part of our collection of artefacts.

You'll also have the opportunity to see our exciting plans for

- Improving the environment around Smallford Station
- Renovating an old railway van body to create a permanent storage space for their exhibition and site this close to Smallford Station so that it can be made available to the public.

Another delightful factor about this exciting project is that we are discussing the active involvement of students with the staff from several departments of our local Oaklands College!

Finally, if COVID-related factors have improved, we'll hold two free, short guided walks - @ 12.00 and 2.00 pm – between Smallford and Nast Hyde Halt (suitable for all family members)

### STOP PRESS: SMALLFORD STATION IMPORTANT UPDATE 30<sup>th</sup> July

*Following encouragement from a District Councillor, Frances Leonard (who happens to be a Member of our Society), on Tuesday evening, 28<sup>th</sup> July, we held a meeting at Smallford Station where we agreed to put in a formal Planning Application for our Collaborative Community Projects – to Improve the Environment around Smallford Station and Renovate and Restore a Goods Van Body that is currently located at Oaklands College.*

*Two key people, a local Town Planner, David Lane, and John Clemow (RIBA, retired), were present, have agreed to support us and will generously be providing their services for free! They've also agreed to meet with students at Oaklands College as and when this is appropriate. Frances has agreed to meet the cost of the Planning Application!*

*This is obviously a very important and exciting time for us!*

### Items available from us

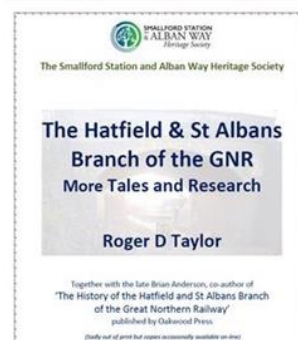
We have a number of items that might be of interest to you; we don't sell them – but would appreciate a donation to our funds!

#### Fridge magnets



Minimum suggested donation  
£2.50 + £1 p&p

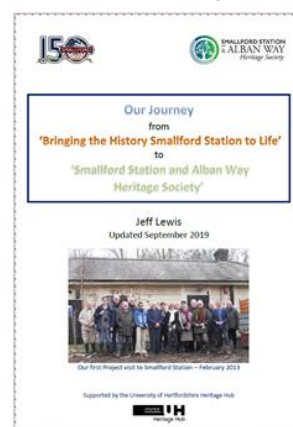
#### Roger Taylor's 'More Tales'



1. Introduction, Biography
2. Railway Memories
3. The Branch Line on Film
4. Specials on the Branch
5. After the Line Closure in 1969
6. Halts, an Incident & Others
7. New Research & Corrections

Minimum suggested donation  
£3.00 + £1 p&p

**The story of our Journey** – from  
Bringing the History of Smallford Station to  
Life to Smallford Station & Alban Way  
Heritage Society



Minimum suggested donation  
£1.50 + £1 p&p

## SMALLFORD STATION AND ALBAN WAY HERITAGE SOCIETY

### OUR EXCITING PROJECT COLLABORATION WITH OAKLANDS COLLEGE

This has inevitably been put on-hold since February. However, we have recently held a couple of on-line meetings with two of the teams involved and they are eager to continue: there are obviously many details to finalise including some kind of timeline, costs to ascertain (and money to raise!) – and the agreement of SADC to resolve!

### STATION DETERIORATION

We continue to be concerned and have contacted the owners about the physical state of the station ticket office: included in this are a hole in the roof, slipped slates, deteriorating paint and woodwork....

### If you'd like to know more about us

(including becoming a Friend or Member of our Society) –

- Take a look at our website – [www.smallford.org](http://www.smallford.org) – where you can see part of our extensive collection of historical photographs, download several documents (including a booklet of their exhibition) and see scenes from two B&W movies (made in 1928 and 1933) showing trains arriving at the station.
- Email [info@smallford.org](mailto:info@smallford.org)

View of the station and ticket office on the left. We believe this photo was taken sometime after the 1st World War, certainly before any greenhouses were built.



Jeff Lewis: Chair: Smallford Station & Alban Way Heritage Society  
[info@smallford.org](mailto:info@smallford.org)

# HISTORY SOCIETY

If you have a drone that can be used to take photographs, please contact Pam, e-mail [croftsp1406@gmail.com](mailto:croftsp1406@gmail.com)

Jeff Lewis has compiled a schedule of listed buildings in the local area. The Society is in the process of photographing as many as we can, hence the drone request above. There are 39 listed buildings plus other listings such as the coal posts. We will be researching the history behind these buildings and hope to publish this as a booklet in due course.

Dr Ruth Herman has been busy. Having completed "Grub Street, the origins of the British Press" (Amberley Publishing 2020), she has been working on a history of Colney Heath and the surrounding area. It may be a surprise that this starts in Roman times. Her style of writing is both easy and amusing while working from original documented sources. Our Society plans to publish this as a book later this year by subscription.

The ownership of the Common is a good example on the importance of original sources, of reading these carefully, and cross checking with other sources where possible. Ruth has discovered sources that show that William the Conqueror (1066 and all that) gave the Common to the Albany family, who then gifted it to the Abbey.

Since then the ownership of the Common has been frequently disputed. Of course it may have been disputed before that, but no record has yet surfaced.

Wikipedia says the "*Colney Heath Local Nature Reserve is a 22.5 hectare Local Nature Reserve in Colney Heath in Hertfordshire. It is owned by St Albans City Council and managed by Colney Heath Parish Council. The site was acquired in the 1950s and 1960s, and it is a Hertfordshire Heritage Site.*"

A Freedom of Information request was submitted to St Albans City Council who replied the Common was owned by Hertfordshire County Council with a copy of the document they referred to in concluding this. However, careful reading of this document shows the Common is owned by Colney Heath Parish Council, with some strips of land along Coursers Road being owned by HCC.

The Colney Heath Parish Council's Strategic Plan for Colney Heath Common, January 2019 <https://www.colneyheathparishcouncil.gov.uk/wp-content/uploads/2019/06/Common-Strategy-2019-v25.pdf> says the Common was acquired by them in 1961 from the Earl of Caledon (Tyttenhanger) and Major General Sir George Burns (North Mymms), and in 1968 it was registered under the Commons Registration Act of 1965 with an area is 63.45 acres (25.68 hectares).

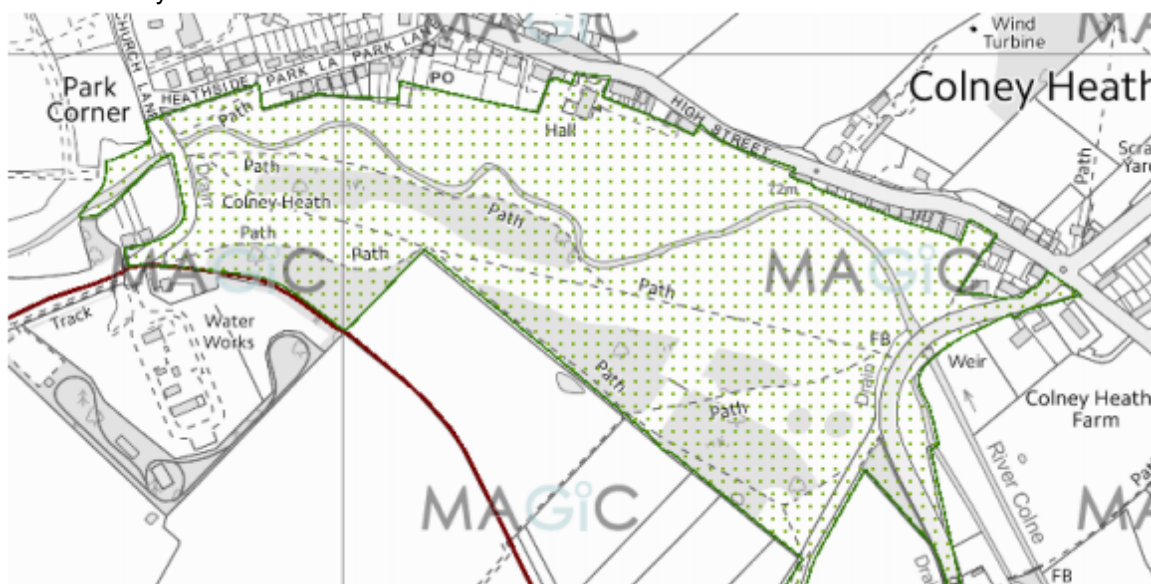


Figure 2 (an extract illustrated above) shows the boundary of the registered common. The Colney Heath Parish Council say they are now in the process of voluntary registration of Council title of Colney Heath Common. The boundary affects houses and properties along the High Street, Park Lane, Heathside and Coursers Road, some of which may not be registered.

The nearly 1,000 years of history of dispute may not yet have ended.



## IRIS' ART GROUP

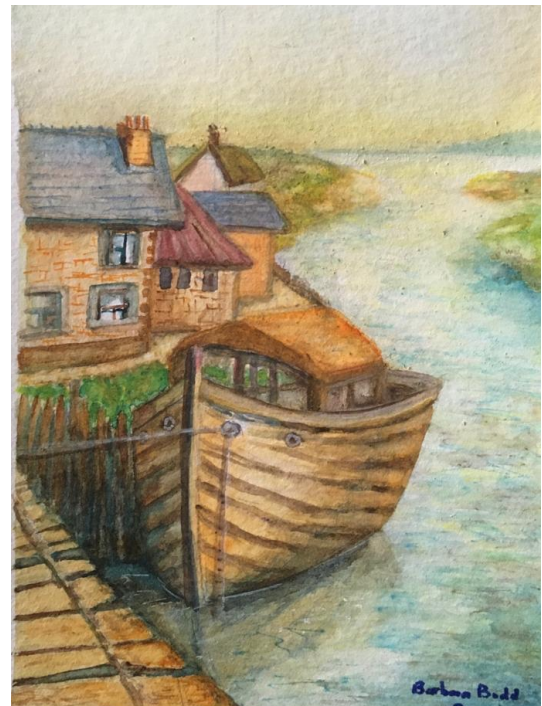
Contact [irisbond8@gmail.com](mailto:irisbond8@gmail.com)

Iris' Art Group has started to meet again in the Village Hall. During lockdown we have continued to paint in our homes with a WhatsApp group catch for a regular "weekly painting together" on Wednesdays. Most weeks we have had a theme; as usual some of our members chose their own topic.

Our paintings are on the gallery page of this website  
<https://www.colneyheathvillagehall.com/gallery.html>  
A small selection is illustrated here.



From the theme of "great artists" – if Cezanne and Monet had used watercolours



We travelled to the seaside (sitting in our "studios") imagining the sound of the sea and the wind.



# ZUMBA

Contact [zumbaalista@gmail.com](mailto:zumbaalista@gmail.com)

Ali Chason continues to run her Zumba classes by Zoom video conferencing. This can run on a computer, laptop, iPad or Smartphone.

Zumba is a great way to get and keep fit, all the more important at this time. This is also a good way to break the sense of isolation by participating in a fun group activity.

Ali's classes are at varying times :  
in the morning (9:30 earliest, 11:00 latest)  
every day and  
6.30 in the evening Monday to Thursday.

See the timetable below.  
Every day there is an optional 20 minute Tone & Stretch class after morning Zumba.

If you want to join in with the fun, e-mail me at [zumbaalista@gmail.com](mailto:zumbaalista@gmail.com)

I will e-mail you an invitation with the programme for the week. You will need to download Zoom onto your tablet, laptop or PC. Then all you need to do is click on the e-mailed link for the session you wish to join.

If you are able to make a contribution for taking part in my classes, I'll be very grateful but this is about coming together. Set your budget as to what you can afford. If you want to pay a weekly fee, that's grand, if you want to pay class by class, I'm equally happy. Anything I make from this venture will be gratefully accepted.

- Pay as you go - £2 per class
- If you know you'll be doing roughly 2 to 3 classes a week - £5 per week
- Unlimited access – you will be doing loads to stop going crazy - £10 per week

Ali's Online Timetable



|           | Login in      | Class Time     | Class          |
|-----------|---------------|----------------|----------------|
| Monday    | 10:10 - 10:25 | 10:30 - 11:30  | Zumba          |
|           | 11:30 - 11:35 | 11:35 - 11:55  | Tone & Stretch |
|           | 18:10 - 18:25 | 18:30 - 19:30  | Zumba          |
| Tuesday   | 10:40 - 10:55 | 11:00 to 12:00 | Zumba          |
|           | 12:00 - 12:05 | 12:05 - 12:25  | Tone & Stretch |
|           | 18:10 - 18:25 | 18:30 - 19:30  | Zumba          |
| Wednesday | 09:10 - 09:25 | 09:30 - 10:30  | Zumba          |
|           | 10:30 - 10:35 | 10:35 - 10:55  | Tone & Stretch |
|           | 18:10 - 18:25 | 18:30 - 19:30  | Zumba          |
| Thursday  | 10:10 - 10:25 | 10:30 - 11:30  | Zumba          |
|           | 11:30 - 11:35 | 11:35 - 11:55  | Tone & Stretch |
|           | 18:10 - 18:25 | 18:30 - 19:30  | Zumba          |
| Friday    | 09:40 - 09:55 | 10:00 - 11:00  | Zumba          |
|           | 11:00 - 11:05 | 11:05 - 11:25  | Tone & Stretch |
| Saturday  | 09:10 - 09:25 | 09:30 - 10:30  | Zumba          |
|           | 10:30 - 10:35 | 10:35 - 10:55  | Tone & Stretch |
| Sunday    | 10:10 - 10:25 | 10:30 - 11:30  | Zumba          |
|           | 11:30 - 11:35 | 11:35 - 11:55  | Tone & Stretch |