

PARISH E-NEWS



News and updates from
organisations in the Colney Heath
Parish community including

Colney Heath village, Highfield,
Hill End, Oaklands, Roestock,
Smallford, Sleapshyde, and
Tyttenhanger

To join the circulation list – its free – email jackclemow@gmail.com

ISSUE 2 SUMMER 2019

In this "Parish E-News" you will see news from, and information about, a number of sources received for inclusion in this issue.

Clicking this link <https://www.colneyheathvillagehall.com/parish-e-news.html> will take you to the website page with

- this newsletter,
- a long listing of organisations and key contacts,
- more detail about organisations, and
- a calendar of Events.

Some of the information will be updated as necessary before the next newsletter is published.

If you spot any errors, have comments, or wish to contribute to the next edition please e-mail jackclemow@gmail.com

INDEX

Page

Editorial	2
Smallford Residents Association	3
St Marks Church	4
Parish Council	6
Women Police Centenary	7
Derrick Crump and Margaret Nash	8
Neighbourhood Plan	9
Smallford Station and Alban Way Heritage Society	12
JMI School	13
Highfield Park Trust	13
Football and Social Club	14
Trestle Arts Base	15
Oaklands College	16
Twinning Association (CBTA)	17
WI	18
Theatre Club	18
Iris Art Group	19
Colney Heath Village Hall	19
Girl Guides, Brownies and Rainbows	19
Mary's Meals	20

EDITORIAL

Thanks

First my thanks to all those who have expressed their appreciation for this initiative, and to all who have joined the circulation list which continues to steadily grow. A number of people have said how they have missed the Chronicle, circulated in hardcopy to every household in the Parish, which ceased to be published in 2015.

Please share

The Chronicle was a valued source of local information and news, a gap which this "Parish E-News" aims to reduce. Of course, being circulated by e-mail to a self-selected circulation list, there are some serious limitations. Please feel free to share this with your contacts who are not yet on the circulation list and encourage them to join, and please print for folk you know who don't use the internet or e-mail. I am investigating funding and logistics for a hardcopy version for Parish-wide distribution but this will not be soon.

Content and criticism

Comments on Issue 1 included a suggestion for a "bit more spice" which I hope you will find. Another comment on Issue 1 was it was too Colney Heath "village-centric". I expect the same criticism will be made about this issue but 70% of the content of this issue relates to Parish wide matters and areas northside of the A414. I would agree this is fair comment in relation to community groups (but not for lack of effort). Over 2000 flyers have been delivered to almost every household in the Parish from Highfield in the west, to Bullens Green in the East, inviting people to join the circulation list and contribute news, articles etc (my special thanks to the WI for their help with this task). I hope that individuals and organisations across the Parish will see the value in contributing.

In this edition

I have started the running order with the [Smallford Residents Association](#) (and a Q&A with their Chair, Craig Tallents). This organization seems to be model for community engagement that other areas of our Parish would do well to learn from and emulate.

[St Marks Church](#) (page 4) is soon to have a new vicar. The Church is very active in our community and runs a number of regular events for all age groups to meet in addition to their services. Special for the summer holiday period in August is their **BIG LUNCH** - a chance for the whole family to enjoy lunch, activities, games, inflatables, crafts, places to sit and relax etc : Thursdays 1st, 8th, 15th, 22nd August. 12.00pm – 2.30pm. The Church supports [Mary's Meals](#) with their coffee morning – a truly heartwarming success story to complete this newsletter on page 20 set there as a parting thought for reflection and inspiration for what can be achieved by volunteers.

The local elections in May resulted in a number of changes in the [Parish Council](#) (page 6) with changes to ward representation and personalities including the retirement of [Derrick Crump](#) and [Margaret Nash](#) (page 8). The Parish Council have created an excellent new website with much useful information including dates and venues for Council meetings, and the minutes of those meetings. Most of the issues that concern residents are discussed at these meetings. Unfortunately websites don't "knock on your door", so I suggest you set a regular date in your calendar to visit <http://www.colneyheathparishcouncil.gov.uk>

Mike Rawlins has provided a detailed and important update of the Neighbourhood Plan (page 9). **Did you know there will be a referendum once the Planning Inspector has assessed the Plan?** [The Smallford Station and Alban Way Heritage Society](#) unveil their plans for the station project on page 12.

Visit the websites for Highfield Park trust, Trestle Arts and Oaklands College – lots going on.

Community organisations – the Twinning Association, the Theatre Club, the WI, the Iris Art Group, and Girl Guiding - provide information on their activities from page 17. Iris would welcome thoughts and ideas on the proposed Art and Photography Exhibition proposed for the autumn on page 19.

On page 19 The Colney Heath Village Hall report on their developments and their "open day" on Sunday afternoon 15th September.



And last but not least, I leave you with a picture of Mike Hall picking up litter – one of the "local heroes" taking a simple action that can have a big impact on how we feel about our neighbourhoods.

Do you have a story about someone who has made a difference or achieved something special?
Any news about what's going on in your area?

Send it to me at jackclemow@gmail.com and I will consider it for the next edition planned for the Autumn.

With my best wishes for the summer,

John Clemow, Editor
jackclemow@gmail.com

THE SMALLFORD RESIDENTS ASSOCIATION

The Smallford Residents Association had its AGM at the St Albans Rugby Club on the 16th May. Chairman Craig Tallents outlined the various planning challenges the community faces and a new committee was elected for the ensuing year. We would be delighted to welcome any Smallford resident who would like to serve on the committee - please contact us on sra@smallford.org if you would like to know more. Our next meeting is on July 16th and where we can clarify any points below

Issues facing the community

St Albans Draft Local Plan – this was referred to the Planning Inspector a month ago. The main things that should concern us are housing and development, building at a rate around 940 houses in the district every year of the Plan.

The Neighbourhood Plan currently being drafted by the Parish will feed into the District Plan. Craig Tallents is leading the Neighbourhood Plan group and said that there is a huge amount of research in developing the Plan. Smallford will sit in a village envelope, with the intention of allowing minor development within the envelope. Much of the major development and housing being planned is also in Smallford and the surrounding areas.

Oaklands Grange in Phase 1 - 378 houses are currently being constructed. All water and sewage will come south down Oaklands Lane – the committee is making strong representations to enable adequate infrastructure is in place to take the additional flows. There will be a phase 2 of the development up to Oaklands College North Drive, with a school being constructed towards Smallford in an area currently in the Green Belt.

The Welwyn and Hatfield Plan have had a recent call for sites which have identified land for development by Ellenbrook and adjacent to Coopers Green Lane. Maps of the proposed areas were displayed on boards at the meeting.

The Hertsmere Plan has identified a position for a new village for up to 6,000 homes near Coursers Road and the M25 roundabout south of London Colney. The extent of the development would be almost up to Colney Heath common and have huge impact on the Parish.

Ellenbrook Park. Arlington, owners of the land, were supposed to pay £1.2m as Section 106 money to be spent on the setting up and maintenance of Ellenbrook Park Trust after they developed the Hatfield Business park in the late 1990's. The Trust was not set up, nor the money paid. Planning approval was then given in January 2017, to allow Brett to mine gravel under this land over a period of 30 years, provided the Trust was set up and £1.2m paid within 12 months. This has not happened and so the approval to mine gravel has technically lapsed, although current indications are that HCC are allowing Brett an extension of time.

One factor which is effectively stalling this application is a 'bromate plume' coming from an old chemical factory in Sandridge, which is flowing in the aquifer below Ellenbrook park. This poses a potential threat to drinking water supplies and is therefore of concern to the community. There is a concern that deep mining of the area will disrupt the plume, currently being 'purged' from an Affinity water site at Bishops Rise Hatfield. County Councillors have been very helpful in raising objections to this application.

Ellenbrook Fields Arlington have now advanced part of the Ellenbrook Fields area to Welwyn Hatfield to construct 1100 homes – this is now in the Welwyn Hatfield district Plan and known as 'HAT 2'

The county council Minerals Plan has been out for consultation recently. Craig said that St Albans District Council did not even comment and will be seeking the reason why this was. Smallford Residents did and so did the Parish Council.

CEMEX. Permission had been granted to mine gravel at Furzehill which will extend the time the plant is working by around 5 years. CEMEX had previously gained permission to refill the quarry

The main focus of the Committee is the Neighbourhood Plan and influencing the District Plan. Craig asked those present to let the committee know if they come across a development – the committee may not have seen it! We have been grateful to Councillor Jamie Day and also to Alec Campbell, who was the Leader of the District Council before the elections.

Committee for 2019/20

Craig Tallents – chair, Hugh Burrell – treasurer, Steve Ross – secretary, Jeff Lewis, Chris Musk, Rita Burhouse, Helen Falk, Lesley Gilbert

Q&A with Craig Tallents, Chair of the Smallford Residents Association (SRA).

First Craig may I thank the SRA for your contributions to the Parish E-News. As you probably know it is an initiative independent of the Parish Council to try and fill the gap in local information as the Chronicle was stopped in 2015.

It would be wrong of me to comment on the Parish Council's decision to put other priorities in front of the Chronicle when I am not in possession of the facts and as such do not know what guided their decision. In general I think however that any mechanism which aids communication between a council and its residents is a good thing.

When was SRA established? How and why was it set up?

I am not sure exactly when SRA was established but it has certainly been going for over 15 years. I believe that it was set up by local residents as a mechanism to ensure the views of the Smallford community were heard. I became involved about 7 or 8 years ago.

The SRA looks very active. How many members do you have?

All the residents of Smallford are members. The core however is the committee which consists of 6 members who drive all the activities of SRA.

How often do you meet and what does your agenda comprise?

We have an AGM for all members to attend and the committee meets every couple of months or more if needed. The work of the committee is centred on planning and development issues and the impact of proposals on Smallford and indeed the wider Parish. But it also includes other issues such as Highways and until it was spun out of SRA the Smallford Station project.

Does the SRA, in effect, act as a focus for cohesion in your local community?

As with any organisation of its type, SRA would welcome more involvement from those that it represents. Having said that however I believe that the residents know that we are here and inform us of any concerns that they have. As such I would like to think that it does act as a focus for Smallford residents.

An idea I have heard is that the Parish Council should form a group of people with experience in developing and running community organisations (e.g. the halls, community groups, sports clubs etc) to help develop community organisations across the Parish. Is this an idea that interests you and, if so, would the SRA be prepared to share your "talents" in running a Residents Association with a neighbourhood wishing to create one?

I am sure that SRA would be happy to help with such a project.

ST MARK'S CHURCH

www.stmarkscolneyheath.co.uk

Church Office 01727 825175



COMING THIS AUGUST – THE BIG LUNCH

A chance for the whole family to enjoy lunch, activities, games, inflatables, crafts, places to sit and relax etc
Thursdays 1st, 8th, 15th, 22nd August. 12.00pm – 2.30pm

Come to any or all of the dates!

This is a bit different from our Holiday Clubs. We need parents and carers to stay with and supervise their children and enjoy all that is on offer.

Each Big Lunch will include a short look at a story Jesus told.

THIS IS A FREE EVENT – NO NEED TO BOOK

Our Sunday Services

8.30am	A generally quieter and more reflective service usually with Holy Communion
10.30am	Family friendly and livelier. Children's and youth activities. Holy Communion usually on the 3 rd Sunday of the month.
7.30pm	Evening Service (not every Sunday; please check website)

New Vicar

We look forward to welcoming our new vicar, Caroline Keightley, who was appointed in March and will be joining us in September. Her first service with us will be on Sunday 15th September 2019 at both the 8.30am and 10.30am services.

You are always welcome to join us, and can find out more about the church and activities at www.stmarkscolneyheath.co.uk or by phoning the church office (01727 825175.) And, if you have any questions, or think we can help you in any way, please do get in touch as well.

A date for your diary



Tuesday 15th October 2019 – 10.30am to 3pm at St. Mark's Church and Centre.
An interactive day with a Christian message for the retired members of our community. Please contact the church office for more details.

OUR REGULAR EVENTS

SMARTEES



Smartees : A toddler group for pre-school children and their parents/carers.
Every Wednesday during term time 10am-11.30am at St. Mark's Church Centre.
Snacks, toys, craft and singing. £1 donation per family (if possible)



Relax : At a loose end on a Friday evening? Aged between 11 and 16 years?
Why not come along to Relax? A youth social for school years 7 to 11.
Relax runs in St. Mark's Church Centre on alternate Fridays 7.30pm in term time.



St. Mark's Craft Group. We meet on the 1st Tuesday of every month 8pm until 10pm in the Church Centre. Always something crafty for you to have a go at, or bring whatever you are currently making and we can craft and chat over tea, coffee and biscuits.



Messy Church. Every 2nd Sunday 4-6pm at Colney Heath School
Games, activities, celebration, a meal together. Messy church is for everyone but if you are a child you must bring an adult along!



The Gathering. Every 2nd Tuesday 2pm in Church. Our monthly congregation for the older members of the community. Come and join us in a café style setting with a chance to discuss, sing and pray together followed by refreshments.



Coffee Morning. 10am-12pm in the Church foyer on the 1st Thursday of every month except August. There is no charge but we accept donations which are shared between Mary's Meals and the Church funds. Everyone is welcome – all ages, and we also have a table of 'pre loved' items which people can donate to or help themselves from.

We would love to see you and your friends for coffee, tea, cakes and biscuits. Everyone welcome, adults and children. *As we are not meeting in August, we will be having 2 Coffee Mornings in July – one on Thursday 4th and another on Thursday 25th.*

Read more about Mary's Meals on page 20

PARISH COUNCIL

www.colneyheathparishcouncil.gov.uk

BACKGROUND TO THE ELECTION HELD ON 2ND MAY 2019

According to St Albans City and District Council information dated 2018 Colney Heath Ward had an estimated 6,259 residents in 2016 with an electorate of around 4,511. The Parish is divided into 3 wards :

Ward	communities	Electors
Colney Heath	Colney Heath Village, Sleafshyde, Smallford, Wilkins Green,	1,850
Highfield	Highfield and Tyttenhanger	1,870
Hill End	Hill End including Nicolas Brakespeare School and Oaklands	791

Until the election in May 2019 there were 4 seats in Colney Heath ward, 1 seat in Highfield ward and 4 seats in Hill End ward. For the 2019 election there were 4 seats in Highfield ward and 1 seat in Hill End ward. The number of seats in Colney Heath ward was unchanged.

13 volunteers responded to the Parish Council Clerk's invitation to the public stand for election as a Councillor resulting in a poll in the Highfield and Hill End wards.

RESULTS OF MAY 2019 ELECTION

In **Colney Heath ward** 4 candidates, all Independent, stood for election for 4 seats so were elected unopposed : Susan Blunt, Cecilia Hathaway, Mark Ouzman and Kate Slaughter.

In **Highfield ward** 7 candidates stood for election for 4 seats.

723 people voted, a turnout of 38.7%

Voters were able to vote for up to 4 candidates but not all did; the result was as follows :

Candidate		Votes	% of votes	
Chris Brazier	Independent	429	21.3%	elected
Peter Cook	Independent	346	17.2%	elected
Kevin Barnes		300	14.9%	elected
Russel Solts		272	13.5%	elected
Graeme Shaw	Independent	238	11.8%	
Susan Devi	Conservative	205	10.2%	
John Clemow	Independent	205	10.2%	

Kevin Barnes and Peter Cook, formerly Councillors in Hill End ward, joined Russel Solts in a contentious contest against Chris Brazier, Graeme Shaw (and yours truly) in the Highfield ward. Given the differences in electioneering positions, Council meetings promise to be far more interesting than anything on TV.

In the **Hill End ward**, 2 candidates stood for election for 1 seat.

319 people voted, a turnout of 40.3%, the result was as follows :

Candidate		Votes	% of votes	
Hilary Brazier	Independent	204	63.9%	elected
James Ryan	Green party	111	36.1%	

The turnout was surprisingly high for an election of district and parish councillors only, i.e. an election that did not co-incide with a Parliamentary election.

PARISH COUNCIL NEW WEBSITE

www.colneyheathparishcouncil.gov.uk

The Parish Council have recently upgraded their website which is attractive, easy to navigate, and is content rich with more content being regularly added.

YOUR COUNCILLORS (all volunteers who are unpaid)

COLNEY HEATH WARD



SUSAN BLUNT has lived in Bullens Green for over 17 years with her husband John Clemow. She retired from work in the NHS in 2013. She has served as both President and Secretary in the local WI where she remains on the committee, is a member of the Twinning Association, and has supported many local events in the village and the wider parish. Susan is keen to serve the village by restoring good relationships between the Parish Council and the community and local organisations.



CECILIA HATHAWAY has lived in the Parish for over 30 years. She is married with three sons who attended local schools. She retired as an Inspector after thirty years with the Metropolitan Police. Her voluntary work has included working for Women's Aid/Refuge in a refuge. She is a regular volunteer at the local food bank and for her Church, especially as a member of the St Vincent De Paul Society. Cecilia is a keen Campanologist, Arsenal supporter and avid environmentalist.



MARK OUZMAN (pictured with Archiie) has lived in Colney Heath for more than 30 years. He is a volunteer, working with two charities, the National Coastguard and the Jubilee Sailing Trust. He can be found most days on the heath discussing Parish and village matters with fellow dog walkers. Mark is passionate about supporting all within the area and - as an environmentalist - is opposed to any loss of green belt in the Parish and in the surrounding areas.

KATE SLAUGHTER

HIGHFIELD WARD



CHRIS BRAZIER has lived in the Parish for 40 years, is married to Hilary Brazier, with three children that attended local schools. He was a Parish Councillor becoming a District Councillor in 2004. He is a member of the football club and chair of the Old Friends Association. Previously he served as a trustee of the Colney Heath Village Hall. While affiliated to the Liberal Democrats as a District Councillor, Chris stood as an Independent for the Parish Council to reinforce the nature of Parish matters.

KEVIN BARNES, PETER COOK and RUSSEL SOLTS

HILLEND WARD



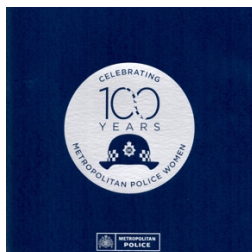
HILARY BRAZIER has lived in the Parish for 40 years, is married Chris Brazier and has 3 boys and 7 grandchildren. She is a passionate gardener having been the Parish Gardener for 20 years. Hilary is a member of Christ Church Hatfield which she has attended since childhood. The environment is very important to Hilary, in particular maintaining the Green Belt and opposing coalescence between Colney Heath and Hatfield. She is a member of Colney Heath Environment Council

WOMEN POLICE CENTENARY SERVICE

Councillor Hathaway and Councillor Ouzman's mother attended the Service of Thanksgiving to mark the centenary of police women in the Metropolitan Police Service at Westminster Abbey on Friday the 17th May 2019.



Councillor Cecilia Hathaway joined the Metropolitan Police in 1976 and retired as an Inspector in 2007. She received her Long Service and Good Conduct Medal in 1999 from the then Metropolitan Police Commissioner Sir Paul Condon and in 2002 received the Golden Jubilee Medal marking HM The Queen's 50 year reign and Golden Jubilee.



Councillor Mark Ouzman's mother, Mrs Josie Spencer MBE is 87 years of age. She joined the Metropolitan Police in 1951 and left in 1955 as she was getting married – married women could not serve as police officers at that time. Career in teaching she became involved in local politics and received an MBE from HM The Queen in 2010 for Services to the Community. She has been Mayor of Chichester three times in 2001, 2005 and 2007.

FAREWELL AND THANK YOU

Serving up to the election were former Councillors Derek Crump and Margaret Nash who have retired from formal service on the Council but may well continue assisting with committee work. Derek served our Parish Council for 29 years and Margaret for 6 years. At the Annual meeting of the Parish Electorate on 23rd May, former chair of the Council Councillor Cook paid tribute to their contribution to the community.

Derrick Crump writes :

My thanks to John (Clemow) for producing the Colney Heath Parish e-News and inviting me to reflect on my time as a Parish councillor having stood down from the position in May.

Having completed 29 years as a Colney Heath Parish councillor it is interesting to think back to 3 May 1990 when I was elected as Liberal Democrat councillor for Colney Heath Village ward, with 469 votes from a 60.48% turnout. Along with the Hill End Ward, the Parish Council consisted of eight councillors : 6 Liberal Democrat and 2 Conservative. A further eight parishioners stood for election but were not successful.

This is quite a contrast and a worrying trend to the recent turnout figures - the 2019 Parish election in Hill End ward now being considered exceptional with a 39% turnout of electorate of 1,870, and for there being a poll, rather than an automatic 'uncontested election' because too few candidates stood for election, as in Colney Heath ward. Also notable was how the 1990 election was strongly party-political - all present councillors have stood as independents (as I did after parting with the Liberal Democrats during the 'coalition period').

Five new councillors joined the team in 1990 along with a new Parish clerk, Caroline Pluck. The late and hugely respected Dudley Wood, who had been the clerk for 32 years, was retiring. As a father of 3 then young children, I had particular concerns about the state of our recreation areas and the ageing play equipment. The Council invested heavily, upgrading the play areas. However, one problem with being in the same job for so long is that the same problems come round again! I am glad to be able to say that the outgoing Council invested heavily in the same parks over the past few years; notably the new multi use games area at Roestock Park and refurbishment of the play area next to Charles Morris Hall in Tyttenhanger, and has set a strategy for further improvements which I hope the new council will implement.

In the run up to the 1990 election Colney Heath parish was under siege from prospective developers; proposed were the Smallford Science Park, Opus Park at Glinwells, new mineral workings etc. Also concerns were expressed about the impact of the proposed housing on the Hill End hospital site. Maybe 29 years on, not much has changed, although the pressure is now focussed on a diminishing Green Belt. Notable back in 1990 was the uncertainty with Parish funding, stemming from the much derided Poll Tax. The late Dudley Wood produced a detailed article in the Colney Heath Chronicle explaining why the £11.67 annual tax per community charge payer was higher than other St Albans parishes.

Also in 1990, objections were made about the outgoing Council's use of ferrets to address the plague of rabbits on Colney Heath Common. Charlie Nash, the Common Ranger, reported he was 'chasing lads on motor bikes off the Common'. Charlie is still our Common Ranger but the distance between him and the motor bikes he chases is now a lot greater. Charlie was also reporting butterflies seen on the Common and I think it is a credit to the Council that despite the increased pressures, the Common is now a Local Nature Reserve, with conservation grazing as part of a detailed management plan and it is still a good place for butterflies and other wildlife.

After over 300 full council meetings and many working groups and outside bodies besides, and hours of reading (all voluntary), it is perhaps worth commenting on whether I would recommend anyone becoming a Parish Councillor. There have been some stressful times, particularly periods without a clerk in post which can place a huge burden on councillors to keep the council functioning. And as you are one of eight or nine councillors it can be frustrating to be part of a structure implementing actions you may oppose with a minority view. But overall it can provide a real sense of achievement and you work with some exceptional people (and a few unusual characters) and learn a great deal about matters and people you would not experience through your employment.



I must say it was a pleasure to be on holiday in an Orkney brewery in May while 'missing' a council meeting without it impacting my publicly available 'attendance record' introduced in recent years. As with all things, 'keeping up' with change is hard work and as you get older the task doesn't get any easier. In his farewell article in the Chronicle in June 1990 Dudley Wood referred to the changing nature of council work: *'in the past 5 years the paperwork has multiplied so much as to become really burdensome, and it is no longer easy to examine new matters in any depth, because of their proliferation. So before the problems start to invade my sleep too much, it is time to hand on.'* Come 2019 I couldn't sum up the state of play better myself although I would add e-mails, social media, word documents and Excel sheets to the 'paperwork'.

I wish the new Council good luck with dealing with both new and existing challenges and thereby continue serving our Community with the aim of making our lives that bit better. I no doubt will continue to assist Charlie with works on the Common; scrub clearance, litter picking, wildlife recording etc, and if anyone else would like to be involved with a 'Friends of the Common' group then do get in touch with me, Charlie, or the Parish Council office.



Margaret Nash writes :

I have been a Colney Heath Parish Councillor from 2013 to 2019, but due to a recent illness I decided not to stand again in May, though I hope I may still attend some of the parish meetings, I will be in the audience not on the council. I live in Colney Heath village and represented that area.

When I was co-opted on to the council in 2013, John Dean was the parish clerk in the office at the Village Hall, sadly he became very ill and died. A clerk from a nearby council helped out until our current clerk, Lisa Chaplin, was taken on and she remains with the council, but the main office area is now located within the Highfield Park Office, Hill End Lane. The council's website:

<http://www.colneyheathparishcouncil.gov.uk/> has information for us.

Whilst the County and District councils have lots to do, there are also things that our parish council must deal with, so amongst others, parish buildings and land, many local parks, dog waste bins, bus shelters, notice boards and Colney Heath Common, all needing parish attention. I am sure our newly elected councillors will put effort into improving parks and equipment, giving comments on local planning and rights of way and also making sure the parish Neighbourhood Plan being worked on by the council and residents, is understood and agreed by local people and the district council as well as an independent examiner.

As well as the last 6 years I was also on the Parish Council many years ago, though only for a short time, so Derrick Crump's article about being a councillor for 29 years has much more information. He has written that people should consider standing for our council, and when there is a vacancy or an election, I agree that it is a good thing that more folk will want to be elected.

COLNEY HEATH NEIGHBOURHOOD PLAN

To volunteer contact the Parish office on 01727 824176 or email clerk@colneyheathparishcouncil.gov.uk

Report by Mike Rawlins

Neighbourhood Plans were introduced in the Localism Act of 2011 and are aimed to give communities more say in how their community is developed. A Neighbourhood Plan once prepared and approved will become a statutory planning document for the Parish of Colney Heath which along with other statutory documents future planning applications will be assessed. It is being prepared on behalf of the Parish Council by a group of volunteers. During its preparation several consultations with residents were held and more will be held before being assessed by the St Albans District Council and finally by an Independent Planning Inspector. Once these stages have been completed it will be put to the residents in a referendum for their final approval.

The current context

The Parish is surrounded by development proposals within the Parish and on all sides from Local Plans proposals by St Albans, Welwyn Hatfield and Hertsmere Councils, which will impact on the wider area as shown on the Map below.

St Albans 2020-2036 Plan has been prepared and is currently being considered by Independent Planning Inspectors appointed by the Secretary of State and is required to find sites to accommodate 913 new homes per year, 15,000 over the life of the plan.

Many sites within the Parish were put forward for development but none so far have been proposed for inclusion in the Local Plan, the nearest being Oaklands College (land adjoining Sandpit Lane) and London Colney.

Hertsmere Council is considering a new garden village of up to 6,000 new homes on either side of Coursers Road which will almost link Colney Heath Village with London Colney. Other areas they are considering include Shenley, South Mimms and Potters Bar.

Welwyn Hatfield DC are considering sites from Brookman's Park-Welham Green-Hatfield including the former airfield site and to the north, together with a new Village to be known as Simmondsbyde.

The Council set up a Steering Group whose view is that we need to understand these proposals and the development pressures before proposing any future development within the Parish as it is clear the Parish may have development, but the Neighbourhood Plan will only propose development in places which are agreeable to the majority of the residents.

The Parish Council is working with London Colney Parish Council and has regular meetings to oppose Hertsmere Garden Village and other developments which may have a significant negative impact on residents living along the A414 corridor.

In 2017 the Government published a standard method for calculating housing needs which increased the number of new homes required in the district and also attempts to address the affordability issue. St Albans being one of the least affordable areas in the country will have to build an additional 40% new homes above the forecast population growth. This new method resulted in the requirement for St Albans District to build 913 new dwellings every year for the next 15 years.

In the autumn of 2017, we asked St Albans Council for the number of homes each Parish would be required to find, they informed us then it would be May-June 2018. The Parish Council asked the question at the June 2018 meeting and were informed that no housing numbers had been set for Parishes to find, so surveys and additional work will be required to demonstrate that our Neighbourhood Plan meets our residents' needs.

Sustainability

Our neighbourhood plan needs to consider employment, protecting current employment sites, while promoting new sites as required, particularly ones for new start-up businesses. The appropriate local infrastructure to support long term employment will also be required and this also is being considered.

Highways And Transport

Hertfordshire County Councils 2050 Transport Vision plans for very limited new road building. The only major plans within the county are upgrading the Abbey Line and the A414 from Hemel Hempstead to Hertford and beyond.

The government is aiming towards more sustainable forms of transport, such as walking, cycling and public transport. Some of our current infrastructure requires protection, while other parts require planning for the future for both commuting and recreational use. The community working parties have been working recording our current pavement network and will continue to do so. It is hoped that the local footpath network will be incorporated into our neighbourhood plan.

Our roads and traffic cause us problems every day. The Steering group has started on work to document and understand the current situation, but more work is required. Any new development will have major impact on an area which already suffers some of the worst traffic congestion in Hertfordshire. Any site/s which may be proposed will be carefully assessed as to its impact on traffic and if mitigation is possible.

The Planning Framework

Our neighbourhood Plan once approved will become a statutory Planning document for the Parish of Colney Heath. It will become the third document by which planning applications will be assessed for the Parish.

National Planning Policy Framework
St Albans District Local Plan
Colney Heath Neighbourhood Plan

The current task is writing draft policies and assessing where additional ones are required to meet the needs of the Parish.

As well as our Neighbourhood Plan the Steering Group has been assisting the Parish Council in responding to Hertfordshire County and District Council consultations making sure that the residents' concerns are passed to the relevant bodies. In the last few years four County and five local consultations have been responded to.

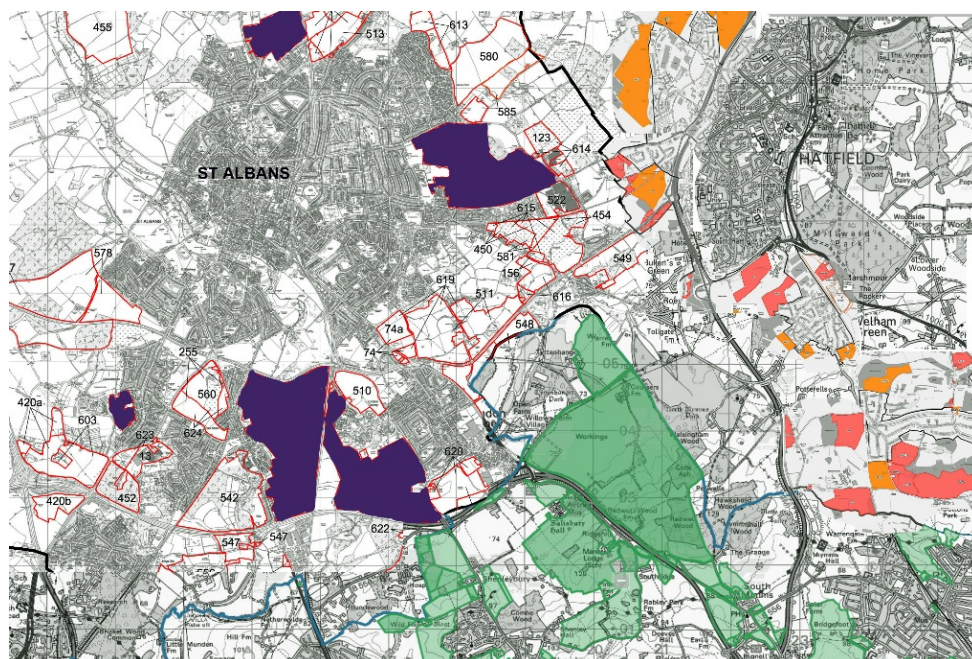
Our time scales

The current view is that it will not be possible to complete our Neighbourhood Plan until St Albans Local Plan is completed. While this is disappointing it does mean that our Plan will have precedence over earlier documents in assessing planning applications within the Parish of Colney Heath. On this basis our plan is not likely to be completed until 2020-21.

Following the success of the public meeting held to consider St Albans Local Plan and Hertsmeare proposed Garden Village we will continue to arrange public meetings to consult with residents. As policies start to emerge, we will be undertaking additional surveys to seek residents' opinions both at community and Parish level.

We hope that you will attend these future events and complete the surveys as they occur.

Landowner proposals for potential development



Key – All sites shown have been proposed by landowner & developers for development to be included in Local plans

St Albans District

Currently rejected
Proposed for development



Hertsmeare Borough Council

All still under consideration



Welwyn Hatfield Council

Currently rejected
Proposed for development



Volunteering - would you like to help?

We need people to assist us in the preparation of our Plan from delivering survey forms, taking photos to assisting on planning and environmental matters.

To volunteer contact the Parish office on 01727 824176 or email clerk@colneyheathparishcouncil.gov.uk

THE SMALLFORD STATION AND ALBAN WAY HERITAGE SOCIETY

www.smallford.org/membership

Jeff Lewis: Chair: Smallford Station & Alban Way Heritage Society

Over the last year the Smallford Station & Alban Way Heritage Society (SSAWHS) Committee has been exploring ways in which the environment around Smallford Station Ticket Office can be improved.

We have had discussions with a range of key organisations, including –

- St Albans District Council (SADC), who own the land around the station, including, of course, Alban Way Community Services Department and their Alban Way Greenspace Action Plan project management team, Countryside Management Service (CMS) and the Planning Department
Both have provided invaluable information and advice
- Oaklands College – with whom we are building a strong, collaborative, working partnership
- Smallford Residents' Association and Councillors representing the local community

Everyone has been very supportive!

As you might imagine, some of our discussions have been 'sensitive' in nature and therefore necessarily confidential. However, we are now in a position to share our aspirations with you and, hopefully, you will be as excited about the opportunities and prospects as we are.

There are two aspects :

Making the Entrances to the Station Area more Inviting

We hope to provide some 'Welcome' signs and a Noticeboard



Improving the Environment around the Station

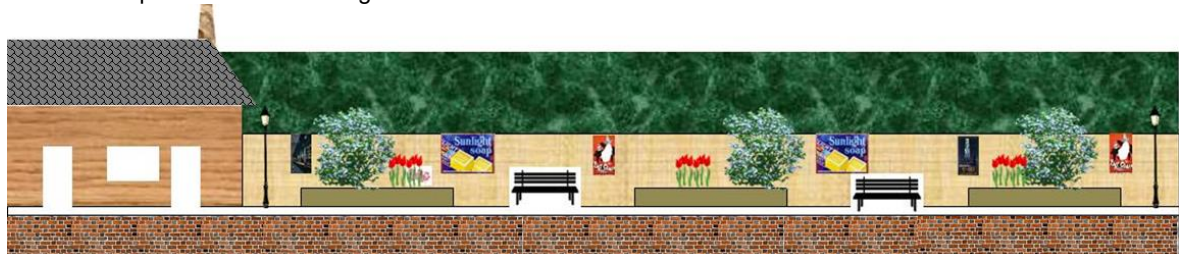
We know what the platform used to look like 100 years ago



We have ideas about how it could look. On the platform we plan to -

- create flower beds
- install replica vintage benches and lamp posts
- install display panels

And here's an impression of how it might look!



To be totally honest – we've already started, in a small way. Last autumn we planted 200 daffodil bulbs (generously donated by Notcutts Garden Centre) around the Station Car Park.

Plus – we shortly hope to be able to let you know about another exciting possibility – watch this space!

If you:

- would like a copy of a more-detailed plan produced by our Working Party

- would like to be actively involved (design, implementation, maintenance...) - it would assist us if you would let us know how you would like to be involved together with any particular skills and interest that you could offer.
- have any ideas/suggestions to contribute

Please contact us via info@smallford.org

If you'd like to be kept informed up-to-date on our activities and developments, you can sign up to our emailing list. Either email info@smallford.org or sign up on our website – www.smallford.org/membership

COLNEY HEATH JMI SCHOOL



Telephone: 01727 823898
 E-mail: admin@colneyheath.herts.sch.uk
 Website: www.colneyheath.herts.sch.uk
 Headteacher: Mr. P. Rose



Local Studies

Throughout the year you will often see our children exploring the common. This is part of their curriculum from map reading, orienteering and nature studies. We feel it is important that the children have some understanding of their local area.

School Readers. Can you help?

Volunteer school readers wanted. Can you offer an hour or two of your time once a week? We welcome people who can listen to our children read on a one to one basis to develop their reading skills and love of books. Please contact the school for details. A DBS (safeguarding check) and references will be undertaken by the school before anyone can start.

Nursery

We offer 15 hours nursery provision which gives children the experience of a primary school setting. This prepares them for full time education and the opportunity to be involved in whole school events such as Sports Day, Christmas performances and our Arts Festival.

If your child is born between 1st September 2014 and 31st August 2015 we have spaces for September 2019. Application form are available on our Admissions Page of our website (www.colneyheath.herts.sch.uk) or by contacting the school office on 01727 823898. Late applications can be accepted.

HIGHFIELD PARK

www.highfieldparktrust.co.uk

Events at Highfield Park

The events planned for this year include

Luna Cinema - Mamma Mia – Here we go again
 Luna Cinema - Bohemian Rhapsody
 Opera Anywhere - Pirates of Penzance
 Photographing Autumn Colours

New for this year is our series of **Nature Talks and Walks**

Bat Night
 Bat Night
 Native trees – and what feeds on them
 Habitats and microhabitats in the park and the surrounding area
 Bat Night

Wednesday 3 July
 Thursday 4 July
 Sunday 14 July
 Sunday 29 September

Friday 19 July
 Friday 16 August
 Sunday 21 July
 Sunday 18 August
 Friday 13 September

For full details please visit our website www.highfieldparktrust.co.uk

Contact details

Richard Bull - Park Manager
Tel: 01727 847242
Email: admin@highfieldparktrust.co.uk
Facebook: Highfield Park St Albans
Twitter: HighfieldParkTr
www.highfieldparktrust.co.uk

FOOTBALL AND SOCIAL CLUB

www.colneyheathfc.co.uk

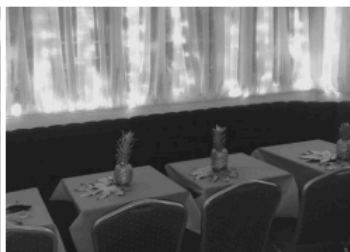
COLNEY HEATH FOOTBALL CLUB

VENUE AVAILABLE FOR HIRE

**FOR ALL ENQUIRIES ABOUT VENUE HIRE
PLEASE CALL LAURA ON 07887 676040
OR CALL THE CLUB DIRECTLY 01727 824325**

**WHY USE OUR VENUE FOR YOUR NEXT EVENT?
WE ARE THE ONLY VENUE FOR HIRE IN THE PARISH
WITH A FULLY LICENSED BAR**

- Family Venue
- Regular Social Events
- Run by Local People
- Ample Parking
- New Members Welcome
- Disabled Access



Main Contacts :

Chairman Martin Marlborough
martinmarlborough@btinternet.com

Secretary Paul Gleeson
Paulgleeson999@icloud.com

Treasurer Richard Smith
rs@colneyheathfc.com

TRESTLE ARTS BASE

www.trestle.org.uk

Events found on Trestle Arts Base website – there's a lot going on there!
Visit their website for details of the events and much more.



St Albans Museum + Gallery | Hepworth Museum Late: Make, Do and Draw

Thursday, 4 July 2019
7:00 pm – 9:30 pm
[St Albans Museum + Gallery \(map\)](#)

The museum is having a party to celebrate all things Barbara Hepworth!

Grab your friends and come along - try your hand at sketching, sculpting and Hepworth inspired beginners craft activities.

Watch live performances with a drink in your hand, join exclusive guided tours of the exhibition and explore St Albans Museum + Gallery after-dark.

No artistic experience necessary.



Family Theatre, New Work, Trestle Youth Theatre

Trestle School of Drama | Home is where...

Saturday, 6 July 2019
4:00 pm – 5:00 pm
[Trestle Theatre \(map\)](#)

Join Trestle School of Drama Begin and Emerge groups for their Summer Sharing

This term we have been exploring concepts of what home means and what it would be like if you had to leave it.



External Workshops, Theatre

Philippe Gaulier Workshop 2019

Mon, 8 Jul 2019, 10:00 am – Wed, 17 Jul 2019, 4:00 pm
[Trestle Theatre \(map\)](#)

Small Nose are really excited to announce that Philippe Gaulier will be running two weeks of workshops in July 2019. This is the perfect opportunity for those who have never been taught Clown, or who have never been taught by Philippe – to experience the perfect combination of Le Jeu (play) and then Clown.



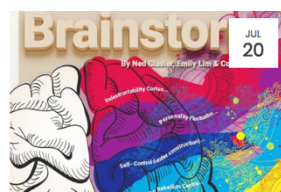
New Writing, Trestle Workshops

Trestle Inclusive Community Groups | WORD PLAY - Free Taster

Thursday, 11 July 2019
1:00 pm – 1:30 pm
[Trestle Theatre \(map\)](#)

WORD PLAY is a new fully Inclusive Community Group run by Trestle Theatre Company, a charity that works with local communities to inspire creativity through participation

The Royal Literary Fund, in partnership with Trestle, hopes to set up a regular Word Play group to run on Fridays from September 2019. The taster sessions in June and July are a chance for people to try out this new activity.



Trestle Youth Theatre, Theatre

Trestle School of Drama | Brainstorm

Saturday, 20 July 2019
6:00 pm – 7:30 pm
[Trestle Theatre \(map\)](#)

Trestle School of Drama participants have been working hard all term on a performance project culminating in a full performance of *Brainstorm*.

Inside every adolescent brain, 86 billion neurons connect and collide to produce the most frustrating, chaotic and exhilarating changes that will ever happen to us.

Brainstorm is a unique theatrical investigation into how teenagers' brains work, and why they're designed by evolution to be the way they are.



Trestle Workshops, Mask Theatre

Trestle SUMMER INTENSIVE TRAINING | Making Mask Work

Tue, 23 Jul 2019, 10:00 am – Fri, 26 Jul 2019, 4:00 pm
[Trestle Theatre \(map\)](#)

This Summer Trestle will be running a 4 day 'Making Mask Work' intensive course for practitioners, teachers and makers. The course will focus on devising and storytelling looking at scripting mask work, story structure and development, mask technique and character.

OAKLANDS COLLEGE

www.oaklands.ac.uk

did you know about "Open to the Community?"
from the Oaklands College website:

Oaklands Venue Hire

At the St Albans and Welwyn Garden City Campus we have a range of flexible space for hire, suitable for any event or occasion.

[Find out more](#)

The Stables Restaurant

The Stables is a fully functioning restaurant that has been built to the highest standard to train the next generation of chefs.

[Find out more](#)

Sports Zone

Just a few miles from St Albans City centre, the Sports Zone at Oaklands College offers state-of-the-art sporting and events facilities.

[Find out more](#)

Oasis Hair & Beauty

Oasis Hair & Beauty salon was created at Oaklands College to create a professional environment where our hair and beauty students could learn their craft.

[Find out more](#)

Equestrian Centre

We have one of the best equestrian departments in the country and run equine lessons and courses for all levels

[Find out more](#)

Animal Antics Parties

Book a fun-filled animal party at our Habitat Centre today!

[Find out more](#)

Acorns Nursery

Acorns Nursery is a 50 place day care setting for children between the ages of 3 months and 5 years. We are based in a homely converted Manor House within the rural grounds of Oaklands College, St Albans Campus.

[Find out more](#)

Sport in the Community

Lessons combine theory and practice and our tutors are friendly, experienced and highly-qualified.

[Find out more](#)

COLNEY HEATH BOISSY SOUS ST YON TWINNING ASSOCIATION (CBTA)

www.colneyheathtwinning.org.uk

Our programme of events since the last E-News included our Quiz night on Saturday 26th March and our Sunday full-English breakfast with bubbles on Sunday 12 April. Most events are open to people who are not members of the Twinning association and are appreciated for their quality and value.

If you are interested in our upcoming events please contact our Secretary Lesley Lewis, 01727 822086 or lewislesley@hotmail.com

Sunday 21 July

Cream tea with strawberries and bubbles, Colney Heath Village Hall

Sunday 8 September

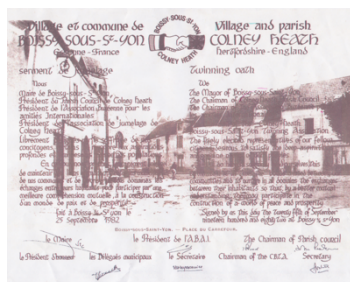
Boules and BBQ, venue TBA

Saturday 19 October

Cocktails & Mocktails, Colney Heath Village Hall

Saturday 7 December

Christmas Buffet and dance, Colney Heath Village Hall



The CBTA appreciates the grant awarded by our Parish Council to support the continuation of the exchange established in 1982 under the "Twinning Oath" signed by the Mairies of Boissy sous St Yon and St Yon, the Colney Heath Parish Council and the CBTA.



In June our friends from Boissy sous St Yon visited us for our annual exchange. Arriving on Friday evening, a packed weekend of socialising and renewing of friendships took place. The highlight was the Saturday evening Soiree which was held at the prestigious Brookman's Park Golf Club. It was a balmy, relaxed evening as we sipped our Proseccos on the terrace and greeted each other in the traditional French way (so much friendlier!) followed by very short welcome speeches by the Chair and President of our respective organisations. It was a pleasure to welcome back the newly elected Chair of the Parish Council, Chris Brazier as our guest.



The exchange of news, and debates over Brexit, continued in a mixture of English, French, and Franglais over a three course dinner - with wine of course.

Eclipsed, the rock band chosen for the evening kicked off after dinner and, as the evening progressed, more people took to the floor including the younger twinning members who were not to be outdone. Many positive comments were made about the music being played although, as usual, there are always some who find the noise level a little too much!



Midway through all the merriment was the Soiree raffle. Many members were delighted to have their ticket picked out of the hat, not least John Rowland seen here triumphantly wearing his prize (pearl earrings & necklace) helped on with them by a greatly amused Nicole.

The Soiree was a great success with a real family feel about it, not least due to those who attended and the efforts of those who chose the venue and organised the food and entertainment.

The time flew by and, all too quickly, Monday arrived and it was time for our friends to return to France.

COLNEY HEATH WI

Find us on www.facebook.com/colneyheathwi
email colneyheathwi@gmail.com or call Joanna on 07956 502369

Colney Heath WI had a busy programme this quarter. Many members have spent time making handmade items for sale at the school carnival in June.



We recently held a village litter pick when members undertook the grizzly task of collecting debris strewn across our village streets.

We made it fun afterwards however, with delicious tea and cakes provided by Susan Blunt.

We would like to say a great big thank you to Manish at the village post office and Colney Heath Football Club who both provided much needed refreshments on a very hot day.

Our monthly meetings have had talks on the history and development of chocolate making with tastings included, and how to get a better night's sleep.

Looking forward we will be having talks on protecting Hertfordshire countryside on July 11, how to dress to express yourself on September 12, and welcoming Anna Sasiak on October 10 who is talking about her experience of motorcycle drag racing.

Our events and meetings are always lively as are our regular book club, craft group, and drama group. We are open to women of all ages and welcome visitors to our monthly meetings with your first visit free. We meet in the Village Hall every second Thursday of the month (except August) from 7.30 to 10.00. Do come along!

COLNEY HEATH THEATRE CLUB

Colney Heath Theatre Club is a not for profit organisation which has been running trips to the West End for the past twelve years.

In April we saw Rip It Up at The Garrick Theatre. This was the ultimate Strictly boy band of dance bringing the 60's hits into the 21st century in an explosion of song, dance, acrobatics and amazing visuals.

Aston Merrygold (JLS) and **Jay McGuiness** (The Wanted) sang, while **Harry Judd**(McFly) was on drums and Olympic champion **Louis Smith** performed amazing gymnastic feats.

They all showed a phenomenal dancing talent.

They were joined by an incredible cast of dancers, singers and musicians, in one of the most energetic shows to ever hit the West End stage.

We have booked Mary Poppins at The Prince of Wales Theatre for 27th November and Goldilocks and Three Bears at The London Palladium on 8th December 2019.

We will be booking a show very shortly for July final details have yet to be confirmed.

We provide a safe, comfortable and convenient way to enjoy an evening in the West End.

If you would like to receive details for theatre trips and outings, please email your contact details to colneyheaththeatreclub@yahoo.co.uk or telephone 01727 826522. We would be delighted to hear from you.

IRIS ART GROUP

irisbond@yahoo.co.uk
07809 098 629

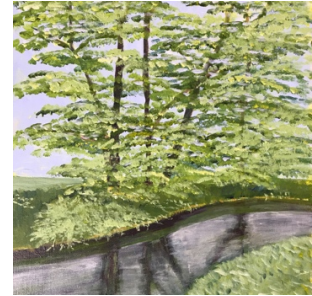
This is an informal group formed of amateurs, both beginners and intermediate level, who have an interest in, and enjoy, drawing and painting, and socializing (and tea or coffee and biscuits).

We meet on the first Wednesday of each month from 10am till noon at the Colney Heath Village Hall and we join the U3A art group on the third Wednesday from 10am to 12.30. We share ideas, techniques, sources for materials etc for painting in watercolours and acrylics. We paint both still life and subjects from reference photos and images.



As our group has grown we now contribute £3 for only those session we attend. This covers the cost of the room and contributes to building up a fund to be used to have occasional tuition by a professional art teacher.

We have space for more members to join our group. There is no commitment to attend a number of sessions, so contact Iris to find out when our next meeting is. If you don't have any materials these can be provided to get you started.



Our group proposes to have a show of graphic and photographic art which would be exhibited in the autumn in a number of venues across the Parish. We are thinking :

- 3 classes of entry – junior school, high school (if the schools are interested in joining) and adult
 - drawing&painting and photography in categories e.g. still life, landscape, portraits and abstract
- Please get in touch with Iris if you are interested.

GIRL GUIDES, BROWNIES AND RAINBOWS

Girl Guiding in Colney Heath.

All meetings are held in Colney Heath School, Mondays term time

Rainbows (5-7yrs) 4.30pm to 5.30pm Contact Leader Pam Fox: 07561162855

Brownies (7-10yrs) 5.30pm to 7pm Contact Leader Natalie West: 07539218831

Guides (10-14yrs) 7pm to 8.30pm Contact Leader Natalie West: 07539218831

Contact Leader for more info or register online at girlguiding.org.uk

COLNEY HEATH VILLAGE HALL

www.colneyheathvillagehall.com

During the summer school holidays local builder T.Taylor & Sons will be completely modernising the kitchen and upgrading the Community Room. These projects will complete the current planned cycle of improvements of the Hall which started with the re-organisation and modernization of the lavatories followed by resurfacing the main hall flooring. Passersby will soon see roadside signage announcing the presence of the hall which we are told even some people in the village didn't know existed.

We will have an "open day" on Sunday afternoon 15th September to thank the sponsors for these projects, and for the public to view our facilities and to meet organisations that use the Hall.



New kitchen



Community Room upgrade



Roadside signage

The Charities Commission have awarded us the charity number 1182267 as a Charitable Incorporated Organisation (CIO). This is an updated form of charity using the Charities Commission Model Constitution. This reflects current best practice of governance and administration for charities. The provisions of the 1936 Trust

Deed are mirrored in the constitution of our CIO to safeguard the Hall for the future. The Village Hall Council were motivated to establish the CIO to attract new and younger trustees to aid succession to safeguard the Hall for the future. The transfer of the hall to the new charity was voted through at the public meeting and is proceeding through the process of the necessary further approvals.

The Hall continues to be intensively used by both regular and casual hirers and enquiries and bookings continue to increase and the modernization works this summer will make the Hall all the more attractive for users.

MARY'S MEALS

<https://www.marysmeals.org.uk>

Wednesday, June 5th saw 43 people come together at St Mark's Church to hear more about the work of Mary's Meals. Mary's Meals is a charity that one of the small home groups from St Marks supports as their Mission.

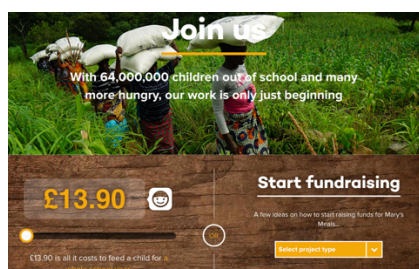
Mary's Meals provides one good meal to some of the world's poorest children every school day.

Our story starts in 1992 in a lopsided, tired looking corrugated iron shed in remote Scotland. Magnus Macfarlane – Barrow (a fish farmer) and his brother decided to take a week off work to collect and take aid to help in an appeal for Bosnian Refugees. They planned to fill a lorry and take it out in person. There is far more to the story which led to Magnus giving up his job and going into full time work taking aid. 10 years later, in 2002, whilst taking aid out to Malawi that was suffering severe famine, Magnus visited a family where the mother was dying from Aids, the father having died a year previously. Mum, Emma, was in despair worrying about who would look after her six children – many in the village were already looking after other Orphans. Magnus sat and talked with Edward, the eldest child who was fourteen and asked him what his hopes and ambitions were.

"I would like to have enough food to eat and be able to go to school one day"

That statement haunted Magnus, and Mary's Meals was born. That lopsided old shed is still their HQ. Their vision statement hanging in there is:

"That every child receives one daily meal in their place of education, and that all those who have more than they need share with those who lack even the most basic things."



Kitchens are set up in the local schools. The women prepare, cook and serve one nutritious meal each school day to every child – giving them the incentive to come to school and the strength to stay and learn. As much as possible local produce is used and the organisation also provides them with what they need to grow it themselves.

The work started in Malawi but now stretches across 18 countries across Africa, Asia, Latin America, Eastern Europe, and the Caribbean; now feeding **1,425,013 children every school day.**

For every £1 donated, 93p goes directly towards the meals. **At this time £13.90 will provide one meal a day for one child for a school year**, but when this group started supporting the mission it cost just £5 per school year per child in Malawi! The work is constantly expanding as they are able because there are so many still to feed and educate.

An off shoot of the work is now *"The Backpack Project"* where Backpacks are packed with various items to help the children with their schooling. It doesn't have to be new. So much our children have they grow out of but it is still good. A list is provided. One of our group members started packing last year and plans to continue. When sufficient are ready they are transported to a place where they can eventually be flown out to the children.

For more information: <https://www.marysmeals.org.uk> or contact the Church Office who will put you in touch with our group.

If you would like a visit from someone who has more information we can put you in touch with Keith & Kate, Mary's Meals Ambassadors, who came and visited us. There are two films which can be viewed on the web page or acquired as DVDs. There is also now a book, "The Shed that fed a Million Children" by Magnus Macfarlane-Barrow that is available.